



FREE

# Cedar Mill News

Volume 18, Issue 2

February 2020



Like us on Facebook for timely updates

Sign up to get The News online: [cedarmillnews.com/signup](http://cedarmillnews.com/signup)

## Eye-popping PGE bill!

Portland General Electric is required by Oregon's Department of Energy to offer "equal pay." If you request that, they are supposed to calculate your usage based on previous bills and then charge you an equal amount every month. This is supposed to be re-evaluated each year to make sure you're paying the right amount.

Account #	
Previous Amount Due	187.00
Payments	187.00
Balance Forward	0.00
Current Charges	166.00
Addl Charges/Credits	886.53
<b>AMOUNT DUE</b>	<b>\$1,052.53</b>
<b>Due date for current bill</b>	<b>02/14/20</b>

Corson indicated that he'd like to see the bill design improved. He says there's a process underway but he's not sure when it will be implemented

When I first moved into the new house in the spring of 2017, I paid the monthly bill for seven months before I requested the equal pay plan. My "actual usage" bill never fell below \$100, but for some reason, my equal pay amount was set at \$86. I guess I assumed that they knew what they were doing and I welcomed the lower amount. Then last June, they adjusted it up to \$187. Well, that seemed reasonable too, because we had installed air conditioning. (We heat with gas.)

Today I opened my email bill to see they wanted \$1035! After several calls and emails, here's what I learned. Their previous billing system wasn't able to take usage into account (?) for equal pay accounts. They switched to a newer system last summer. According to PGE spokesperson Steve Corson, the new system has an automatic review of equal pay every four months, to prevent this happening again.

However, my debt from the underbilling was just piling up in the system, month after month. Although the

front of the bill showed a \$0 balance forward, on the back of the bill was the "Total Account Balance" that had been steadily accruing.

When I posted about this on the CMN Facebook page, as I expected there were many people who had been affected by this system glitch. Few of them had the big bill that I got but many people received "true-up" bills over the last few months.

Oregon's Utility Regulations say (ORS 757.077) that if a public utility determines that they have underbilled a customer, they can "only collect amounts incorrectly billed during the 12-month period ending on the date on which the public utility issued the last incorrect bill; and (B) May not collect amounts incorrectly billed more than two years before the date on which the public utility identified the incorrect bill.

It's unclear if this is a violation of the law, or if I have any legal recourse. The underbilling began in March 2018, and went on until May 2019. They are going to send me an itemized account of all charges and payments on this account.

In any case, they offered to spread the payment onto my future bills for 12, 24, or 36 months to make it easier to pay, with no interest.

Portland General urges customers to call Customer Service at 503-228-6322 if they are in this situation. You too should probably request an itemized accounting!

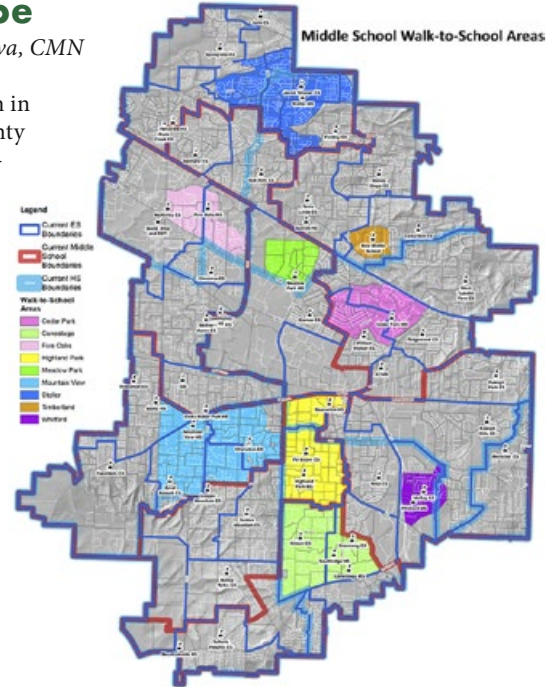
Details of this month's charges	
Meter # 932517406N, Schedule 07	
Basic Charge	11.00
Energy Use Charge (125,000 kWh x \$0.0651)	8.14
Energy Use Charge (65,000 kWh x \$0.0620)	55.38
Energy Use Charge (54,125 kWh x \$0.0729)	3.91
Energy Use Charge (378,875 kWh x \$0.0708)	26.71
Transmission Charge (179,125 kWh x \$0.0000)	0.37
Transmission Charge (1,253,875 kWh x \$0.0004)	3.05
Distribution Charge (179,125 kWh x \$0.0431)	7.72
Distribution Charge (1,253,875 kWh x \$0.0460)	56.46
<b>Subtotal - Energy Charges</b>	<b>174.14</b>
102 RPA Exchange Credit (125,000 kWh x \$-0.01018)	1.27
102 RPA Exchange Credit (65,000 kWh x \$-0.0022)	0.57
102 RPA Exchange Credit (278,875 kWh x \$-0.0048)	1.38
105 Regulatory Adjustments (179,125 kWh x \$-0.00016)	0.03
105 Regulatory Adjustments (1,253,875 kWh x \$0.00013)	0.16
109 Energy Efficiency Funding Adj (179,125 kWh x \$0.0043)	0.88
109 Energy Efficiency Funding Adj (1,253,875 kWh x \$0.0039)	4.98
110 Energy Efficiency Customer Svc (1,433,000 kWh x \$0.0000)	0.07
112 Customer Engagement Transformation Adjustment (1,433,000 kWh x \$0.0000)	0.43
123 Decoupling Adjustment (179,125 kWh x \$0.0000)	0.02
123 Decoupling Adjustment (1,253,875 kWh x \$0.0001)	2.51
132 Federal Tax Return Credit (1,253,875 kWh x \$-0.00182)	2.23
138 Demand Response (179,125 kWh x \$0.00014)	0.03
135 Demand Response (1,253,875 kWh x \$0.00044)	0.55
127 Solar Payment Option Cost Recover (1,433,000 kWh x \$0.00047)	0.67
143 Smart Fuel Adjustment (179,125 kWh x \$-0.00019)	0.03
143 Smart Fuel Adjustment (1,253,875 kWh x \$-0.00017)	0.21
145 Boardman Decommissioning Adj (179,125 kWh x \$0.00027)	0.05
145 Boardman Decommissioning Adj (1,253,875 kWh x \$0.00028)	0.33
<b>Subtotal - Adjusting Schedules</b>	<b>2.84</b>
Low Income Assistance	171.99
Public Purpose Charge (2%)	0.59
<b>Subtotal - Taxes and Fees</b>	<b>5.87</b>
<b>Current Energy Charges</b>	<b>177.57</b>
<b>Equal Pay Account Status</b>	
Equal Pay Payment Balance	1,052.53
<b>Total Account Balance (may reflect deposit on file)</b>	<b>1,052.53</b>

\*Our Federal Credits Benefits are supplied by Bonneville Power Administration (BPA).

## Middle School boundaries begin to take shape

by Cami Villanueva, CMN student intern

The population in Washington County served by the Beaverton School District (BSD) has been growing steadily. To accommodate new residents, BSD has built a new middle school in the Timberland area of Cedar Mill. The building has been serving as a "swing school," providing space to students whose schools are being rebuilt. It will finally become a Middle School in 2021. With a new school comes new boundaries for all the district's middle schools. Not too long ago BSD opened the new high school, Mountainside, and the high school boundaries had to change. Let's just say, here we go again.



Walkability is one of the factors being considered during this process. Non-transportation Zones (i.e. walk-to-school areas) are updated annually by Transportation Department staff. The walkable area depicted for the new Middle School (Timberland) is preliminary and subject to revision up to the opening of the school in SY 2021-22.

In fall 2019, the Boundary Change Advisory Committee was formed, consisting of volunteer parents and community members.

Continued on page 4

## No progress to report...



Developers are still waiting for the last few permits to be issued before building can commence in earnest on the Milltown Center.

Still no word on a new tenant for the old Bales building. A couple of possibilities didn't come through. They would still like to include another contract Post Office if it works out.

# Cedar Mill Business Roundup

Do you have news or events or know of something that you would like to see covered in the Cedar Mill News? Please write to Virginia Bruce at [info@cedarmillnews.com](mailto:info@cedarmillnews.com)

## Fieldstone Cupcake Contest

Saturday, February 15, 2-3:30 pm, Fieldstone Cornell Landing, 9860 NW Cornell Rd., free.

Fieldstone Cornell Landing is hosting "The Great Portland Cupcake Challenge." Teams from six local senior living communities will race against the clock to create stunning cupcake masterpieces.

A distinguished panel of judges, led by Beaverton Mayor Denny Doyle, will critique their creations based on best design, flavor, and creativity. In addition to the competition the event will offer a bountiful assortment of fresh baked goods for sale.

All proceeds from the bake sale will go to the Alzheimer's Association of Oregon & SW Washington. "We are thrilled to partner with other senior living communities on this unique and exciting event," says Krista Kinzer, Executive Director of Fieldstone Cornell Landing. "We look forward to having lots of fun and raising lots of money for our local chapter of the Alzheimer's Association."

The event is free and open to the public. Parking is limited, so an RSVP is required by calling 503-292-9222.

## Pharmaca Integrative Pharmacy celebrates five years

February 7-9, Pharmaca in Timberland Center

Happy Fifth Birthday to Pharmaca Beaverton! We have been serving natural health and beauty to our community for five years. Please come and celebrate the milestone with us. We will be serv-

ing cupcakes and coupons! You'll receive a Pharmaca hand soap with \$100 purchase. We're also creating extravagant raffle prizes, so stop into the store to enter your name.

We are having a Flash Beauty Sale on February 8 from 1 -5 pm. There will be 20% off ALL beauty products. We are offering FREE mini-facials from Lift Lab, a high performance skin care line featuring powerful marine collagen. Vendors will provide samples, answer questions and give away raffle baskets worth over \$200. We always have a blast at our events and the best part is how much you can save on incredible products. Ask our knowledgeable staff about their favorites.

Love is in the air on February 13! We are having a Valentine's Day Shopping Event with a \$10 off coupon and 3X rewards for our loyalty program customers.

From February 21-23 we will be offering deluxe samples of our favorite products. Please swing by to try out the best of the best and you'll receive a discount when you buy the full size!

As always, we're here to support your health and wellbeing. If you need immune support, natural beauty or therapeutic supplements for a health condition, please ask our wonderful staff for advice.

## Village Gallery of Arts

For more details and information on any of these events, please check our website or call the Gallery: [villagegalleryarts.org](http://villagegalleryarts.org), 503-644-8001.

**Second Sunday Artist Reception**  
Sunday, February 9, 2-4 pm, Village Gallery, 12050 NW Cornell, next to Cedar Mill Library

Come meet the artists and enjoy refreshments while browsing the new show! The featured artist is Suzanne Ebert who is a watercolor, acrylic, collage and encaustic artist. This month's media focus wall uses oil media. This wall highlights the work of our members who specialize in using oil paints, pastels, or crayons, or various combinations of oil media.

Classes and Workshops are [listed on the website](#). Here are a couple of new offerings.

## Children's Creative Reuse Art Class

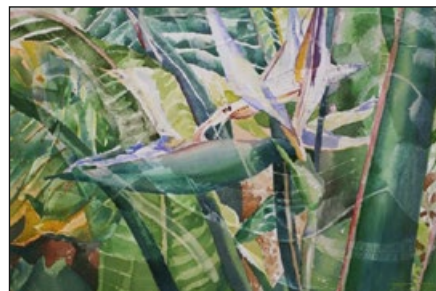
Thursdays, February 6, 13, 20, 27, 3:45-4:45 pm.

In this four-week course, children, ages 7-11, explore their creative potential in a fun, playful and safe environment to learn various art techniques and create fun craft projects, which will be taken home to share with family and loved ones. The class will focus on the process rather than the product. This allows students of varying skill levels the opportunity to explore their creativity in a low-pressure environment. We will help develop their artistic ability on how to create forms of art by making new things out of old things. Your child will explore a variety of art mediums depending upon the reuse/repurposing supplies available. Our goal is to encourage each student to utilize the creative reuse (upcycling/repurposing) method and create useful and beautiful items from materials that would otherwise be discarded. Our hope is for the students to share this process with their friends and family.

## Experimental Watercolor Workshop

Wednesday, April 15, 1-4 pm.

Bring more play and imagination into your watercolors! This one-day workshop, taught by Debbie Teeter, is appropriate for beginners on up. I have been painting since high school, explored watercolors in college and am always up for a new twist. The techniques we will explore can be used in both representational and non-representational work, and will utilize an eclectic array of "toys." We will not be creating a painting in class but



Experimental watercolor by Debbie Teeter

developing a bank of possibilities which you can then apply to your studio practice. Plan to be loose and have fun! [Check website](#) for supply list and more details.

## Touchmark public events

Touchmark in the West Hills invites the public to participate in the following complimentary events. Touchmark is located adjacent to Southwest Barnes and Leahy roads at 840 SW Touchmark Way. To attend, RSVP to 503-954-1640.

### Getting acquainted with your Apple Watch

Wednesday, February 5, 2 pm

Do you have a new Apple Watch and are interested in learning how to use it? This session will introduce the watch and its many capabilities.

### Love Event!

Saturday, February 8, 2-4 pm.

In celebration of the approaching Valentine's holiday, this art show is centered on the timely theme of love. Release your inner creativity and fashion handmade gifts and visit booths displaying love-themed arts and crafts.

### Lunch and Learn: Senior Living

Tuesday, February 11, 11:30 am.

Julie Ouellette from NW Senior Resources will discuss retirement options people may want to consider now or in the future, and will share tips on searching for and finding the right services. A complimentary lunch will be served.

### Lunch and Learn: Vitamins & Heart Health

Wednesday, February 12, 12-1 pm.

Certified Fitness Professional Sherri Peterson will talk about vitamins B and D and their effects on that critically important organ and muscle, the heart. A complimentary lunch will be served.

### Parkinson's Support Group

Wednesday, February 12, 5:30 pm.

This support group meets the second Wednesday of each month and is open to those living with Parkinson's as well as family members and friends.

### Casino Night

Thursday, February 20, 5 pm.

Game night! This fun evening will include casino games, dinner buffet, and various beverages.

### Caregiver Dementia Support Group

Wednesday, February 26, 5:30 pm.

This supportive group of individuals meets the fourth Wednesday of each month to share the challenges of living with and caring for someone who has dementia.

Continued on page 10

### The Cedar Mill News © 2020

Published monthly by

**Cedar Mill News LLC**  
3270 NW Kinsley Terrace  
Portland, OR 97229

Online: [cedarmillnews.com](http://cedarmillnews.com)

Copy Editor: John Ramey

Business & Community News Editors:

Cami Villanueva, Genevieve Coblentz,

Paper distribution: Mark Lewis

Website Production: Georgia Stanley

Publisher/Editor: Virginia Bruce

503-803-1813

[info@cedarmillnews.com](mailto:info@cedarmillnews.com)

Printed by Pacific Office Automation

Opinions expressed in this publication are not necessarily those of its advertisers.

## We need editors!

One of the ways we are able to keep bringing you the very-local news is our team of volunteer editors. They take the raw material that's submitted for publication each month and edit it for style and content. The [current team](#) has been with us for over a year, and it's time to build the pack!

In the past we've mainly worked with high-school students, but we're open to anyone who can help. Requirements include: attention to detail; good computer and email skills; good spelling and grammar; and a schedule that's flexible enough to meet our deadlines. An interest in writing and particularly journalism is helpful but not essential.

There are additional opportunities to research and write articles, but honestly the primary need is for editors to process the Business News and Community News information we get. We use Google Docs to distribute, organize, and edit the material.

Benefits include: getting the news

### New Business Spotlight

## Cascadia Taphouse

by Andrew Bitans

It seems like you can get a beer or cider on tap at any movie theater or grocery store these days, let alone one of the countless taphouses across the metro area. And yet, throughout this beer and cider boom, Cedar Mill has remained without its own dedicated taphouse. Noting the lack of family-friendly places to get together for a beverage, aside from more traditional bar/restaurant establishments, local residents Jesse Udom and Rich DeCoste saw a need they could help fill.

The co-owners recently opened the Cascadia Taphouse, located on the west end of the Sunset Mall,



before everyone else; helping your community; constructive feedback about your writing; experience using a style sheet to produce consistent, clear and useful stories; a great resumé item; a reference for future school or job applications; and your name in print every month!

If you are interested, or know someone who is, please send an email to Virginia Bruce at [info@cedarmillnews.com](mailto:info@cedarmillnews.com).

### Development News

## Life Time Fitness waiting for interpretation

Last month we wrote about the [Life Time Fitness project](#) proposed for the southwest corner of Barnes and Cedar Hills Bl. The developers are still waiting for the Director's Interpretation on the vesting of the Peterkort PUD. Beaverton estimated that it would be published in early January, but at press time it's not available. If you're interested in following this, you can visit the [Proposed Development Projects](#) page on the Beaverton website and look for Life Time Fitness.

with the aim of bringing back the old-school social network and creating a gathering place that is community and family oriented. It's a place where you can set your phone down and strike up a conversation with your neighbors. Kids are welcome all day until 7 pm and outside food is allowed. They serve a limited menu of snacks such as chips and salsa, but with numerous restaurants nearby, you are encouraged to get something to go, and then head over to wash it down with a tasty beverage.

Cascadia Taphouse has 20 taps, comprised of primarily Oregon and Washington beers, as well as three ciders. They also offer a selection of wine as well as non-alcoholic options, so there is sure to be something for everyone. To-go cans and growlers are available too.

They host a handful of regular events such bingo and a bottle share. The location is also available for special events. Please see their website for more details.

[Cascadia Taphouse](#) is located at 13619 NW Cornell Rd and is open Sunday-Wednesday 11 am-10 pm and Thursday-Saturday 11 am-11 pm.

for your Valentine...find something lovely or give a gift certificate for a custom design!

Find us on Facebook!  
Link Custom Jewelers

**CUSTOM JEWELERS**

13306 NW Cornell

Open 9:30-7 M-F  
10-6 Sat • 11-4 Sun

Get your share of fresh organic produce delivered Thursdays, June-November, to a convenient Cedar Mill\* location!

\*More pickup days & locations available  
Learn more and sign up online for the 2020 season!

[LoveFarmCSA.com](http://LoveFarmCSA.com)

love farm csa  
a family-owned, organic, community-supported agriculture farm

**NORTH SOUTH FOUNDATION**  
Empowering Excellence in Education

Non-profit K-8 student competitions in Math, Science, Spelling, Vocabulary, Geography, and Essay Writing

Learn more about our free/low-cost practice sessions and regional contests  
<http://tinyurl.com/nspfpx>

HELP US PROTECT  
**Oregon**  
FROM JAPANESE BEETLE

Japanese beetle has been detected in the Cedar Mill area. Please come to a public open house event to learn more about the impacts of beetle establishment, proposed treatment, and to have any questions answered.

**Upcoming Open House Outreach Events:**

February 12 from 5pm - 7pm  
Meadow Park Middle School, 14100 SW Downing St, Beaverton, OR

February 22 from 1pm - 3pm  
Cedar Mill Library, 15325 NW Central Dr, Portland, OR

For information, maps, and more, please visit our website  
[www.JapaneseBeetlePDX.info](http://www.JapaneseBeetlePDX.info)

Individuals requiring special accommodations or translation at the meeting should contact Ashley Toland as soon as possible at 503-986-4638 or by emailing [japanesebeetle@oda.state.or.us](mailto:japanesebeetle@oda.state.or.us)

Oregon Department of Agriculture  
635 Capitol St NE  
Salem, OR 97301-2532  
503-986-4638

**Oregon IPPM**  
Department of Agriculture  
Insect Pest Prevention & Management

Mention Cedar Mill News to receive a \$50 Gift Card!

Sonia Bhagwan, MBA, Travel Agent  
Your local Disney travel specialist!  
503.995.4719  
MandMMagicalAdventures.com/soniabhagwan.html

**CBD**   
**MEDICINE FOR LIFE**

Safe, effective, 3rd-party tested  
Hemp-based CBD

Helpful for:  
• sleep  
• pain  
• anxiety  
• pets and more

760 NW Dale (enter from parking lot)  
Hours: M-Sat 9:30-7 • Sunday 10-6

Winter SEASON TO SAVE

503-643-6767  
301 NW Murray Blvd

Sunset TIRE FACTORY

**COMPUTER HELP?**  
CALL THE EXPERTS!

**ELECTRONICS UNLIMITED**  
serving Cedar Mill

- ▶ Spyware/Adware/Virus Removal
- ▶ Hardware & Software Troubleshooting
- ▶ Affordable Backup & Recovery Solutions
- ▶ Specializing in Server & Laptop Repair
- ▶ We Service Business & Home
- ▶ On-Site - Day, Evening and Weekends

503-848-9191  
www.eucomputers.net

Sign up to get  
The News in your inbox:  
cedarmillnews.com/  
signup

SCHOCH DAIRY AND CREAMERY

From the farm to your fridge.  
In hours, not days.  
Fresh milk daily, 7 am - 9 pm  
24335 NW West Union Rd • 503-647-2638  
schochdairy.com

*Boundaries, continued from page 1*  
The Advisory Committee has held public meetings to create test maps of middle school boundaries that best fit district and student needs. The first meetings held in November were workshop projects for boundary drawing, and the following meetings have been for work to improve those original maps. A final test map will be recommended to Superintendent Grotting in March of this year. Superintendent Grotting will then provide his input on the boundaries and submit his own recommendation to the School Board. It is expected that the Board will make the final decision in May. However, the boundaries will not be put into effect until “Timberland” (the new school doesn’t have an official name yet) opens in 2021.

So far, there have been eight public Advisory Committee meetings. Since the meeting on January 16, the Advisory Committee cut, edited, and created boundaries to leave eight test maps for consideration. The Advisory Committee has been working hard to consider all families’ needs. Jennifer Alger, a Beaverton School District parent, says, “[The] decision to rule out Test Map Option 4 last night proved that we are in good hands. Option 4 only seemed to focus on availability of space and disregarded all other criteria,” acknowledging the challenge and responsibility of the Advisory Committee.

There are many variables that go into changing boundaries, such as classroom capacity, special programs within the school, student body diversity, walkability, and many more. Currently, Stoller Middle School is over its capacity, and because of new developments and projected future student enrollment for all middle schools, Stoller cannot continue to push its capacity. This is why “Timberland” is being added to the district. It’s important that BSD addresses this problem of overcrowded classrooms now.

Unfortunately, it’s impossible to equally take all variables into consideration. That’s why it’s important for parents and community members to share their input on what they think is best for them and their children. The Advisory Committee needs the community’s help to make this difficult decision. BSD encourages all parents and community members to get involved. On the district website, there are test map images and their statistics, videos of previous public Advisory

Committee meetings, and a place to submit questions or comments.

There will be two more public meetings in February before the Committee submits their recommended map to Superintendent Grotting:  
February 13, 6:30-8:30 pm, Five Oaks Middle School, 1600 NW 173rd Ave.  
February 24, 6:30-8:30 pm, Whitford Middle School, 7935 SW Scholls Ferry Rd.

**Common Middle School Experience sessions**

Thursday, February 6, 6:30-7:30 pm at every BSD Middle School

Please join us to learn more about the Beaverton School District’s efforts to create a common experience at all of our comprehensive middle schools. This effort includes middle school course offerings and schedules that are standardized across the District. Learn more at: [bit.ly/38IMOY3](http://bit.ly/38IMOY3)

**Cedar Hills Ready!**

**How to Communicate in a Disaster (When nothing works)**

Monday, February 17, 7 pm, Cedar Hills United Church of Christ, Niebuhr Room, 11695 SW Park Way, free

How do you connect with loved ones in a disaster, especially when nothing works? Communications can be nearly impossible in a disaster or an emergency because cell phone networks can get overloaded or damaged. Letting your loved ones know you are safe can bring them great peace of mind—and can be crucial in reunification. Do you have a plan for how you will connect with your family members? Learn from amateur radio experts and neighbors on how to face this

challenge before a disaster happens. Share strategies and make a reunification plan for your family at our next Cedar Hills Ready! Neighborhood Preparedness meeting. Topics will include social media, cell phone protocols, FRS/HAM radios, services available from Red Cross, FEMA, and Amateur Radio Emergency Service (ARES), and more. If you have one, please bring your radio.

For more information, visit our website at [cedarhillsready.org](http://cedarhillsready.org) or contact Karen at [info.cedarhill-ready@gmail.com](mailto:info.cedarhill-ready@gmail.com)



## What's Real ID, and do you need it?

If you're planning to board a plane after October 1 this year, you'll either need a valid passport, a passport card, or a Real ID compliant Oregon drivers' license.

In an effort to tighten airport security post-9/11, Congress passed the Real ID Act in 2005. In response, three years later Oregon lawmakers passed a bill that prohib-

issue Real IDs.

If the computer system upgrade goes as planned, [Oregon DMV](#) will begin offering a Real ID option on July 6, 2020. To fulfill the demand of nearly one million Oregonians who will want the Real ID option, DMV would have to issue 32 licenses a minute every business day from July to October. That's just not possible.

If you don't have a Real ID compliant form of ID at the airport, TSA will put you through an alternate identity verification process that could take an hour or more, and you could miss your flight.

There is an answer for Oregonians: obtain and use a passport or passport card.

The cost of getting a new passport card is roughly equal to that of getting a replacement license with the Real ID option—and you can apply now at one of over 76 acceptance sites across Oregon. Most full-service Post Offices offer the service.

If you're going to try for a Real ID anyway, [visit this page](#) to learn the forms of identification you need to bring to DMV to prove your identity.



A Passport Card may be your best option for travel this year.

ited the state from enforcing the act unless the federal government paid for it. That state law was finally repealed in 2017, and federal waivers exempting Oregonians from needing Real IDs for commercial air travel expire October 1, 2020.

However, starting in 2017, the DMV was beginning to upgrade its computer system from one that had been in place since the '60s. The agency must now wait for the upgrade to be completed in order to

## Skyline Living Series

The Education Committee has lined up great topics for our 2020 "Skyline Living Series." All sessions are held at Skyline Grange #894, 11275 NW Skyline Blvd. and are free and open to the public, no registration required.

Wednesday, February 12, 7-9 pm

**Natural Care of Orchard & Garden:** April Jamison of Garden Ecology will speak about working with nature to minimize the use of chemicals while enhancing the natural landscape and producing more abundant healthy fruits and vegetables.

Wednesday February 19, 7-9 pm

**Fruit-Bearing Shrubs:** Dennis Brown, OSU Master Gardener, will speak about caneberrys and blueberries. Also, he will include more recently introduced exotic fruit-bearing shrub and vines, such as hardy kiwis (kiwiberries). He will review varieties best suited to our area, cultivation requirements, and basic pruning principles. **Thursday, March, 18 7-9 pm**

**Skyline Elk:** Are you curious about the elk roaming our area?

Come listen to Geoff McMullen, assistant district wildlife biologist on Sauvie Island for Oregon Department of Fish and Wildlife. He will talk about our elk, their lifecycle, habits, hoof disease, hunting regulations, and elk/deer proof fencing. [Go to our website](#) for more details.

## Misinformation, Fake News, and Political Propaganda Workshop

Wednesday, February 19, 6:30-8 pm, Bethany Library Annex, 4888 NW Bethany Blvd, Suite K-2,

Are you overwhelmed with messages from politicians, news sources and other media? Distinguish truth from fiction using real-world examples of political ads, news headlines, logical fallacies, graphs/charts, the effect of word choice in messaging, statistical data and other types of information. Learn how to find accurate information and become your own "fact-checker" in this workshop led by local librarian and teacher Donna Cohen.

CEGAR MILL GARDEN CLUB 2020 LET'S TALK SERIES

### LET'S TALK SMALL GARDENS

**DO YOU HAVE...**  
a balcony, condo patio, porch, or inside bookshelf? Are you interested in learning about small gardens or a new hobby?

**YOU CAN MAKE...**  
a great garden in these small spaces! Come chat with the Cedar Mill Garden Club members on the how-to!

@ CHRIST UNITED METHODIST CHURCH  
12755 NW DOGWOOD ST, PORTLAND  
Saturday, February 22nd, 2020 | 10AM | Calburn Chapel  
FREE FOR ALL / NO ADMISSION  
Please visit Cedar Mill Garden Club Facebook Page for more information.

**Refinish First LLC**  
Kitchen, bath, cabinetry refinishing & more!

**Small changes:** Restore Your Finish  
Door to Drawer Conversion  
New Hardware • Soft-Close Drawers...

**Big Changes:** Reface/Paint • New Veneer  
Cabinet replacement/modifications...

Visit our showroom!  
Monday-Friday 9-5 and by appointment  
Call for a free estimate  
**503-620-5541**  
[refinishfirst.com](#)

OR CCB: 208312

**2018 Angie's list SUPER SERVICE AWARD**

*A change would do you good!*

Read over 100 sterling reviews on: Angies List, YELP, HOUZZ, Google & Next Door

**Dean H. Shade Attorney at Law**  
503-644-5539  
13765 NW Cornell  
[dshadelaw@gmail.com](mailto:dshadelaw@gmail.com)

**\$\$\$ CASH \$\$\$**  
**FOR JUNK CARS**

**FRED'S AUTO REMOVAL**  
Call or text 503-810-3061  
[FredsAutoRemoval@gmail.com](mailto:FredsAutoRemoval@gmail.com)

**Invites you to the Great Portland Cupcake Challenge!**

Cheer on teams from six senior living communities as they race against the clock to create stunning cupcake masterpieces. Judges will vote on best design, taste, and creativity.

**Saturday, February 15th | 2:00 PM**

**Call to reserve your place!**  
**(503) 292-9222**



**BETHANY**  
FAMILY PET CLINIC

**503.828.9178**

BethanyFamilyPetClinic.com

15166 NW Central Drive Portland, OR 97229

**OPEN 7 DAYS A WEEK**




Bring in this ad for  
**10% off**  
through February 29, 2020

Hours  
Mon-Sat 10 am-9 pm  
Sun 10 am-8 pm

**WESTERN OREGON DISPENSARY™**  
760 NW Dale



**Autumn of Life**  
Senior Housing & Advisory Services

Chérie and Catherine are experienced senior living advisors assisting Cedar Mill families in finding the best housing options.  
*Our service is free for clients!*

[AutumnOfLife.net](http://AutumnOfLife.net) 503-701-5054  
DHS #1025



Experience an exceptional beginning.

Our esteemed Montessori program is accepting applications for preschool.

**msb.org**



**Sunset Athletic Club**  
Cedar Mill's Outstanding, Family-Oriented, Sports, Fitness and Racquet Club

Across From Sunset HS  
**503-645-3535**  
Locally Owned/Operated  
[www.SunsetAC.com](http://www.SunsetAC.com)



Group Fitness Classes – Including Yoga

## North-South Foundation promotes student excellence in academics

**North South** is a non-profit organization that coordinates practice-sessions and contests in multiple subjects for students in grades 1-12, and also helps raise money for underprivileged students in India.

“Students’ persistent practice pays off. For example, the vast majority the winners of the Scripps spelling bee last year were NorthSouth participants,” says Sanjeev Trika, the Portland chapter-director. “Competitions inspire kids to work harder, and they have fun while learning a lot,” he says.

NorthSouth offers a series of practice sessions and helps students participate in academic competitions. Many of the practice sessions are free, the contests are nominally priced, and their registration fee may be tax-deductible (depends on your situation). Money raised through the registrations and donations is sent to support education in India.

Locally, the program is run by 20+ dedicated volunteers. The program is seeking to broaden outreach and increase communication and cooperation among all students and families.

The regional contests will be held in April at PCC’s Willow Creek campus. Practice sessions for the

contest are underway. Practice sessions are led by advanced high school students and generally take place on Saturdays. Top students from the regional contests are invited to participate in national



contests, which will be held in University of Washington this year.

Trika is an Engineering Manager at Intel, which encourages employees to give back to their community through volunteering their time. In addition, Intel and other employers may also match donations to cover NSF fees.

Learn more and get involved at the [NSF-PDX page on Facebook](#), which links to the website with detailed schedule information.

## Cedar Mill Garden Club talks Small Gardens

**Saturday, February 22, 10 am, Christ United Methodist Church, 12755 NW Dogwood St, free**

We all have potential small gardens. You can make pleasing small gardens anywhere, even on the bookshelf in your office or the window sill in the kitchen. You may have noticed the increasing number of apartments and condos appearing in our Cedar Mill area and you may even live in one. It is possible to enhance their architectural designs with small gardens and greenery on the balconies.

Our members can help you set up your small or larger garden. We

have years of experience. The most important thing to understand is the aspect of your space, such as the direction the plant faces, the amount of sun it gets, watering requirements, and exposure to the elements.

Thankfully, technology has gifted the modern gardener with new growing techniques. There are exciting innovations that can make even the darkest corner of your apartment or porch a fresh food production space or pleasant retreat! There are plenty of handouts and information at the talk. Get that small space working for you!



## Gardening classes and sales

It may still be winter, but gardeners know that it's not too early to begin to plan and learn new skills. Plant sales in March and April offer the chance to add natives to your landscape, to reduce the use of chemicals, support essential pollinators, and create habitat for birds and other native insects and animals.

West Multnomah Soil & Water Conservation District has an [informative section](#) about gardening with natives, including a section



about "meadowscaping"—replacing a monoculture, chemical-intensive lawn with native bunch grasses and wildflowers that attract native wildlife.

Here are some classes and events to help you get your green on!

### Dennis 7 Dees Classes

Dennis' 7 Dees offers a variety of free classes for gardeners of all ages and abilities. Pre-registration is required, use the links or register in the Cedar Hills Garden Center store, located at 10455 SW Butner Rd.



Purple hellebords

### Hellebores and Early Bloomers

Saturday, February 1, 10 am

If you are feeling the winter blues, you probably don't have enough flowers! Come get inspired by learning about Hellebores and other winter bloomers that can be planted now in containers or in the

ground. Our garden centers are beginning to fill back up for the season and we can't wait to see you again! Free class; [pre-registration required](#).

### Terrarium Workshop

Saturday, February 8, 10 am

Join us for this fun, hands-on workshop and make a terrarium to take home! Learn the necessary ingredients and proper techniques while being inspired by various styles and creative options. Discover which plants work best for different types of containers and/or light exposures. \$35 class fee covers materials used during workshop; [pre-registration required](#).

### Perennial Edibles

Saturday, February 15, 10 am

From asparagus to rhubarb, this class will teach you about perennial edible crops that don't need to be replanted each year. We will discuss some of the pros and cons of perennial edibles and where and when to plant them. If you are looking to stretch your edible planting calendar and extend

the harvest season, don't miss this class. Free class; [pre-registration required](#).

### Roses Made Easy

Saturday, February 22, 10 am

Have a sunny patch of ground where you desire stunning summer color, year after year? Plant roses and reap years of rewarding bouquets and blooms! We will share our tips for successful rose growing, talk about the different types and their uses, and highlight some of our favorite varieties to grow. Free class; [pre-registration required](#).

### Rose Pruning Clinic, Free Hand Tool Sharpening, and Soil pH Testing

Saturday, February 22, 12-3 pm

Get ready for spring with Portland Rose Society! Rose experts will be answering questions and demonstrating proper rose pruning techniques. Bring your hand pruners to be sharpened while you shop and a 1-cup bag of soil for free pH testing! [Pre-registration required](#).

### Cornell Farms classes

All classes are held at Cornell Farm, 8212 Southwest Barnes Rd., and are free. Visit the [Events page to register online](#).

Mason Bee Workshop with Mandy

### Shaw

Sunday, February 9, 3-4 pm

Did you know that Mason bees are our primary fruit tree pollinators in the Pacific Northwest? This springtime pollinator out-pollinates even the most diligent honey bees. Learn how to care for and cultivate these gentle pollinators with beekeeper Mandy Shaw. In this workshop you will have the opportunity to get hands on as Mandy shares one of the important tasks in Mason beekeeping - the cocoon harvest!

### Portland Rose Society Event

Saturday, February 15, 1:30-3:30 pm

Come learn about how to take care of roses with members of the Portland Rose Society. Rose pruning demos, pruner sharpening, and soil tests! Bring one pair of garden pruners to get them sharpened, and a sample of your garden's soil to get it tested. Soil test results will be sent via email.

### Houseplant Swap

Sunday, February 16, 3-4 pm

[See website for details.](#)

## Plant sales

### Small Woodlands Association Native Plant and Tree Sale

Saturday, March 14, Cloverleaf Building at the County Fair Complex

Come check out all the beautiful plants at our annual Native Plant Sale! Located indoors at the Cloverleaf Building at the Hillsboro Fair Complex, it's a perfect place to get some advice about native plants and buy plants that are sometimes difficult to find at regular nurseries.

Most plants are potted, as noted in the Plant List 2020. We provide native plant experts to help with selection, boxes for handling and transporting the plants, and general volunteers to help collect and carry the plants to your vehicle. Credit cards, cash, and checks are welcome payment. Come early for the best selection. All profits fund high school natural resources education. [Learn more here.](#)

### Tualatin Hills Nature Center Plant Sale coming in April

Saturday, April 25, 10 am-2 pm, at the Nature Center, 15655 SW Millikan Way

Native plant experts will be on hand to help you choose annual and perennial plants for your landscape. More information will be available in our April issue.



**Prevent Flooding & Water Damage With Our 12-Point Sump Pump Maintenance Service**  
**(971) 275-2920**

**RECEIVE \$100 OFF YOUR FIRST SERVICE!**

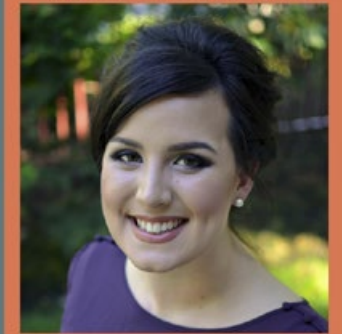
Regular price \$179

to claim your offer please visit:  
[drcrawlspace.com/cedar-mill](http://drcrawlspace.com/cedar-mill)

**FREE Senior Home Placement**  
**Call us first!**

We will compare, tour, and make recommendations based on health needs, lifestyle, location preference, and budget.

**Our services are FREE!**



*Living Well*  
 Bess Lindahl • 971-330-4743  
[LivingWellSenior.com](http://LivingWellSenior.com)

**Estate Planning**  
 that focuses on you,  
 not just your money.

**CRESCENDO LEGAL**  
 Schedule a Family Wealth Planning Session today and get it for free (\$750 value).  
 Call 971-220-7171 to schedule or visit [crescendolegal.com](http://crescendolegal.com)

*CPO News*

**School safety, safe routes, and bicycles**

Tuesday, February 11, 7-9 pm,  
 Leedy Grange Hall, 835 NW Saltzman

Join us for the February meeting to learn more on these topics. If you can't attend in person, we live-stream the program on the [CPO 1 Facebook page](#).

**Lockout / Lockdown? What does it mean when schools are put on alert**

Representatives from Beaverton Police Department and Washington County Sheriff's Office will explain the situations that call for schools to be secured, and what it means for students, teachers, and parents.



*Learn about options for getting kids to school car-free!*

**Safe Routes to School**

Leah Biado-Luis, Beaverton [Safe Routes to School](#) Coordinator, will let us know more about this important program to encourage safe walking and biking around our neighborhood. She'll be happy to answer questions, and she'd also like to know how she can support us in the areas of increasing accessibility and safety for pedestrians and bicyclists.

**WashCo Bikes**

Joe Kurmaskie, Executive Director of the [Washington County Bicycle Transportation Coalition](#) ([WashCo Bikes](#)), will describe their programs. Your county wide bicycle transportation coalition would love to get everyone, from young to old and in between, creating a sustainable, more livable community with two wheeled travel and fun. They host Saddle Up Summer Day and Overnight Bicycle camps for kids, families and adults; a year-round Adopt-A-Bike program that provides helmets, lights, locks and bicycles to students, veterans, immigrants, needy families, and hospital patients. They run a community bicycle center in Hillsboro and host classes, clinics, safety rodeos, and school programs. They have tons of volunteer opportuni-

ties. Come hear more about their programs and enter a free raffle to win a bicycle and gear!

**January meeting recap**

We had a lively discussion of various aspects of vacation rentals at our January 14 meeting. Washington County is considering whether to begin regulating short-term rentals in the county. A large group of AirBnB hosts attended, along with neighbors who have rentals in their area. We're sure that Senior Washington County Planner Suzanne Savin went home with lots of good ideas and more understanding of the issues.

We also brainstormed topics for future meetings. Working from a list of ideas we've been collecting, and taking suggestions from members, we tallied up interest to help us plan the year. Top vote-getters included:

- Terra Nova School, possibly combined with Master Gardeners
- Connecting the CPO with K-12 students: how can we help students be more aware of local issues and how democracy works in a community? We welcome suggestions for this topic!
- Oregon State Legislative Report: we'll bring our state Senator and Representative to let us know how the short session went.
- Urban Wildlife: should we be concerned when we spot wild animals in the neighborhood? Bonnie Hays Animal Shelter; HOAs; and TriMet topics also were interesting to many, so we'll do our best to bring these topics to you in the coming months.

With a primary election coming in May, we'll cover levies and measures in March, and candidates in April. [Sign up to get email reminders](#) and learn more on the CPO 1 page at Washington County.

**New CPO Program Coordinators**

The CPO program is managed by the County Administration Office. Community Engagement Program Coordinators (PCs) support the volunteer CPO leaders, and last summer two of them resigned, and the third budgeted position had been vacant for some time. A search was conducted last fall and three new PCs were hired. We'll get a chance to meet Piseth Pich, the PC who will work with CPO 1, at the



February meeting.

**Washington County legislative report**

At the January meeting of the Committee for Community Involvement (CCI, the leadership group of all CPOs) we met and heard from the three new Government Relations Managers for the county. Each has their specialty but together they represent the county's interests with the Oregon State legislature. Erin Doyle talked about issues relating to general government and public safety; Jagjit Nagra works on land use and transportation and economic development; and Paige Spence works on health care.

One of the issues they're all interested in is the lack of funding for Community Corrections. This program works to prevent the recurrence of crime among adult offenders by supervising them and connecting them with the resources they need to change problem behavior. The county has had to close a residential facility due to lack of state funding.

CPO members are welcome to attend [CCI meetings](#), but only CCI reps can vote. Let us know if you're interested. Meetings are generally held on third Tuesday evenings.

**Land Use and Transportation 2020-2021 Work Plan draft**

Public comments are sought on the draft Washington County Work Plan for 2020-2021. The plan determines what LUT Long Range Planning (LRP) staff will be working on throughout "Ordinance Season," from March-October, including proposed Ordinances (the laws of the county) and "Issue Papers," which staff puts together to explore topics that may result in future action. Interestingly, one of the issues under consideration is to end Ordinance Season so that ordinances can be considered throughout the year. Staff says that would take a revision of the County



Charter and a public vote.

Projects addressed in the Work Plan come from various sources: staff recommendations; requests from developers, business, and community organizations including CPO committees; requests from other governments such as cities, counties and state; and unfinished tasks from previous years.



Among the priority tasks this year are: Housing Affordability; Significant Natural Resources; Short-term Rentals; and Transit Planning. The document is online here. A copy will be available at the February CPO 1 meeting, and in the Community Information section of Cedar Mill Library—ask at the Reference Desk.

Visit the [Draft Work Program page](#) on the county website to download the draft and find out how to comment. All comments received by February 28 will be provided to the Board of County Commissioners as they evaluate the plan.

### Washington County Forum

Founded in 1956, the Washington County Public Affairs Forum provides a place for the interchange of ideas on civic matters. Each week the Forum brings together community leaders, members, and guests who care about what happens in Washington County, the Metro region, and our state.

All events are held at Coyote's Bar and Grill, 5301 W Baseline Rd. in Hillsboro, and are free and open to everyone. Lunch can be ordered from the menu beginning at 11:30 and the program starts at noon. Forum members may ask questions. Learn more at the [Forum website](#). Programs are also live-streamed on the [Forum Facebook page](#). Monday, February 3

Health Care in Washington County: delivery and policy perspectives from our local providers, Lori James-Nielson, CEO Tuality Healthcare; Kasi Woidyla, Virginia Garcia Clinic; Dr. John Hunter, CEO OHSU Health. Monday, February 10

Beaverton State of the City with Beaverton Mayor Denny Doyle Monday, February 17

Tualatin State of the City with

Tualatin Mayor Frank Bubenik Monday, February 24

North Plains State of the City with North Plains Mayor Teri Lenahan

### Inside WashCo Radio

Former WashCo Forum President Rob Solomon has developed an interview show featuring in-depth conversations with interesting and influential people in Washington County. The original show plays Friday at 1:30 pm on KUIK 1360 AM and is repeated the following Sunday at 5 pm. In addition, they are on KBOO (90.7 FM) the first, second, fourth and fifth Wednesdays (when there is a fifth in the month) at 9 am

All programs are available through podcast subscription, or [direct on the website](#).

February topics include:

Affordable Housing/Homeless Panel (part 1):

Affordable Housing/Homeless Panel (part 2):

Encore Broadcast: Centro Cultural Executive Director, Maria Caballero Rubio

Governor John Kitzhaber on health care (part 1):

Governor John Kitzhaber on health care (part 2):

### Indivisible Cedar Mill

Monday, March 2, 6:30 pm for an hour of socializing, meeting 7:30-8:30, email for location

We are a progressive, grassroots organization that opposes the Trump administration and believes in furthering progressive causes as well as acting locally to keep Oregon blue.

Our March meeting will feature guest speaker Promise King of the League of Minority Voters. [Email Karyn Servin](#) for location.

### Stand On Every Corner

Third Thursday monthly, 5-6 pm, corners of NW Cornell and Murray Blvd.

We host a monthly protest to show our frustration with the Trump administration. All are welcome to join us. We gather and hold signs at the intersection in a peaceful protest. Please feel free to bring your own signs but we will have some to share.

### Ukulele group meets Mondays

Second & fourth Mondays, 2-3:30 pm, contact for Cedar Mill location

Join Cedar Mill Ukulele Group for fun, and learn to play, or share your expertise. Call 503-278-2440, or email [nikkijones119@yahoo.com](mailto:nikkijones119@yahoo.com)

**TOUCHMARK**

**GOOD {RESULTS} COME TO THOSE WHO {REACH FORWARD}**

**THE {FULL} LIFE AWAITS**

**TOUCHMARK IN THE WEST HILLS**  
 FULL-SERVICE RETIREMENT COMMUNITY · PORTLAND, OR · 503-946-5427 · [TOUCHMARKPORTLAND.COM](http://TOUCHMARKPORTLAND.COM)

1921843 © Touchmark, LLC, all rights reserved

Always something "new" at 2nd Edition!



Valentine theme 2/8

2nd edition resale

India theme 2/10

12505 NW Cornell Road (at the east end of Cedar Mill Library)

Asia theme 2/24

New items arriving daily!

Sales benefit Cedar Mill and Bethany Libraries



**Badger Tree Service**


Certified Arborist

Two generations of LOCAL Expert Tree Care

Tree • Hedge • Shrub Care  
Ornamental/Bonsai Pruning  
Lot & View Clearing  
Removals  
Stump Grinding  
Brush Chipping

**Badger Tree Service Inc.**  
**503-648-7445**  
Licensed, bonded, insured


CCB # 82766



**SUNSET SCIENCE PARK FEDERAL CREDIT UNION**

**YOUR DREAMS AND OUR RATES GO GREAT TOGETHER**

OPEN YOUR EYES TO A CREDIT UNION™  
YOUR MONEY FURTHER.COM



NCUA

Business News, continued from page 2

**Ackerly public events**

All events are at The Ackerly at Timberland, 11795 NW Cedar Falls Drive, and are free but RSVP is required by calling 503-350-3400.

**Senior Fitness Class**

Wednesday, February 5th, 19th, March 4th: 2:00-2:45 Fitness class geared toward 55+ age group. Focus is stretch, strength and maintaining or increasing mobility and balance.

RSVP is required. Please call 503.350.3400.

**Infinity Rehab Wellness Talk: Aging Eyes**

Thursday, February 27th, 1:00

How is your eyesight? Changes in vision, as well as the chances of developing vision problems and eye disease, increase as we all age. Come to this month's Infinity Rehab Wellness Talk and learn more about the most common eye diseases and other vision problems experienced by older adults. Find out what treatments are available and discover other strategies and tools one can use to reduce the impact of visual problems on the active life you want to live! RSVP is required. Please call 503.350.3400.

**Listening Session: Christina Stephenson, Democrat for State Representative, District 33**

Saturday, February 29th: 2:00 pm  
You're invited to a listening session for Christina Stephenson, A Candidate for State Representative for HD33 (NW Portland, Cedar Mill and Bethany)

**Resolutions 2020: 7 Steps to Save More**

by *Sunset Credit Union*

Now that the new year is here, many people will try to turn over a new leaf and make saving money a priority. Here are seven ways to make your new saving goal a success.

1. Set measurable and attainable goals: Setting goals is important, but setting the right goals is crucial. Get specific on the amount, the date and the purpose. The more specific the goal, the better the chance of completion.

2. Break your goal into easy steps: Breaking down goals into manageable bites makes big numbers less intimidating. Don't try to save \$5,000 for the year. Instead, save \$100 a week. Yes, the goals are the same, but which sounds easier?

3. Make saving like paying a bill: Additions to your savings account should be like any other regular bill you pay. The only difference is the

payee. To make the process easier, set up automatic deposits into your savings account.

**4. Start tracking expenses:**

Tracking your expenses is crucial to see where your money is going and how you can save. For example, maybe you think you spend \$200 a month eating out. But tracking might reveal that you actually spend double that amount.

**5. Find the money:** The real challenge is finding the money within your budget to make it happen.

After you track your expenses and know where your money's going, you're in position to spend less.

**6. Track your progress:** Tracking your goals is important for two reasons: to check up on your progress and to stay focused.

7. Reward yourself: Did you meet your savings goal for the month? Treat yourself to a \$5 latte, or whatever you consider a guilty pleasure. But don't feel guilty — you've earned it.

Sunset Credit Union is a full-service, not-for-profit financial institution serving anyone who lives, works or attends school in Washington County. Visit [sspfcu.com](http://sspfcu.com) or stop by their office at 1100 NW Murray Blvd. across from the McDonalds in the Safeway Shopping Center) to learn more.

**Bethany Family Pet Clinic limits boarding during planned construction**

The Bethany area has been quickly growing, and [our clinic](#) has been growing with it. This is one of the best problems to have, but requires restructuring our clinic to fit the needs of our community.

Construction start date is not confirmed but may be as early as February. During this construction, we will still be upholding the same standards of care with one exception—we will be limiting dog boarding to medical boarding only. We have a list of recommended day-care and boarding facilities in the area if you need suggestions.

We apologize for any inconvenience, and we appreciate your patience while we are going through this project. For more information, contact us at 503-614-9061. The clinic is located at 15166 NW Central Drive in Bethany.

Read The News online:  
[cedarmillnews.com](http://cedarmillnews.com)

**Writers Mill**

Sunday February 16, 1- 3 pm, upstairs meeting room at Cedar Mill Library, 12050 NW Cornell

Our guest speaker will be Maryka Biaggio, author of Parlor Games (Doubleday, 2013) and Eden Waits (Sunbury Press). Maryka will speak about doing research for a historical novel, and will also discuss querying agents, submitting to publishers, and how to select a publisher to query. Join us, and get ready to take your writing seriously in 2020. Find out more from our website, [portland-writersmill.org](http://portland-writersmill.org), or email [admin@portlandwritersmill.org](mailto:admin@portlandwritersmill.org).

**Cedar Mill Farmers Market**

The Cedar Mill Farmers Market crew is busy planning for the upcoming 2020 season!!! Our opening day will be May 2nd and that means it's time to accept vendors and book musicians!



Our Vendor Application is now live. Visit [cedar-millfarmersmarket.org/vendors](http://cedar-millfarmersmarket.org/vendors) to review our guidelines and see how to apply.

Musicians / Entertainers—In

addition to our regular awesome music spots each week, we are inviting more community groups/ local school groups. Are you in a local dance group, drum line, hula hoop team, choir, etc?. We just may have a spot for you. Or maybe you are a clown and love to make balloon animals or a magician and would like to try out your latest illusions...

Contact us at [ourcmfm@gmail.com](mailto:ourcmfm@gmail.com) if you are interested. We would love to meet you & talk about it!

**Bonny Slope Pancake Breakfast**

Saturday, February 8, 7:30-10:30 am, Bonny Slope Elementary, 11775 NW McDaniel Rd



Find your buffalo check, flannel pajamas & lumberjack accessories to make a morning to remember!

This year's Pancake Breakfast will feature special guest, Timber Joey, from 8:30-10 am.

Tickets on sale now. Families can purchase from any fifth grader or online at [bonnyslopepsc.org/](http://bonnyslopepsc.org/)

[store/pancakes](#). Advance tickets are \$5 per person or \$20 per family (max 6 people). At the door, \$7 per person or \$25 per family.

The Pancake Breakfast is organized each year by BSE's fifth grade families. This annual event helps support the fifth grade two-day science school field trip.

### "Dine-out night" school fundraisers

**Tuesday, February 18, 10:30 am-11pm, Five Guys on Cedar Hills Blvd**

Support the Sunset High Marching Band by eating hamburgers! Just mention the fundraiser and Five Guys will donate 15% to support the Sunset Apollos marching band! The band is traveling to participate in OrlandoFest this April and are fundraising toward that goal.

**Monday, February 24, 5-9 pm, Chipotle on Cornell**

Support Cedar Mill Elementary by eating at Chipotle. Just mention the fundraiser, and Chipotle will donate 33% of proceeds.

### Beaverton Historical Society

**Tuesday, February 11, 7 pm (Doors Open at 6:45), Elsie Stuhr Senior Center, 5550 SW Hall Blvd.**  
Suggested \$3.00 donation benefits

### Beaverton Historical Society

Beaverton Historical Society Presents Doug Neely portraying Dr. John McLoughlin under the auspices of the McLoughlin Memorial Association, City of Oregon City, National Park Service and Fort Vancouver. He will emphasize Dr. McLoughlin's role in the Oregon Territory through 1846.

### PCC Experience Music

The Portland Community College Rock Creek Experience Music Series presents two concerts in February. The concerts will begin at 7:30 pm and will be held in the Forum Theater, Room 114, Building 3, at 17705 NW Springville Rd., in Portland. Admission is a donation at the door. Parking is \$2 (permits are available at parking machines). **February 18**

Come hear salsa and more with [Son de Cuba](#), a quartet created by musicians from Cuba and the United States. The band has roots in Latin, African, and jazz rhythms and blends this vast knowledge of different beats together in classic and modern Latin songs, exuding energy and happiness. Be ready to dance!



*Son de Cuba*

### February 25

Jazz guitar, Spanish flamenco, Brazilian bossa nova and West African polyrhythms cross paths in Portland-based trio [Caminhos Cruzados](#), which means "cross roads" or "paths crossed" in Portuguese. Several disparate musical traditions do just that in this band. The trio features renowned jazz guitarist Dan Balmer, guitarist Nat Huls-kamp, percussionist Israel Annoh, and special guest vocalist Lamiae Naki from Morocco.

For more information about these concerts, please contact Anthony Catalan at [anthony.catalan@pcc.edu](mailto:anthony.catalan@pcc.edu) or call 971-722-7866, or go to [pcc.edu/musicrc](http://pcc.edu/musicrc).

### Choirs Perform Brahms' Requiem Mass

**Saturday, February 15, 7:30 pm, Village Church, 330 SW Murray Blvd**

One of classical music's most popular and personal works, the German Requiem Mass op. 45, by Johannes Brahms, will be performed by the Portland Community College Rock Creek Chamber Choir and the Pacific University Choirs accompanied by full orchestra and guest soloists baritone Richard Zeller and soprano Anne McKee Reed.

Dr. Samuel Barbara, director of choral and vocal studies at PCC Rock Creek, will conduct the February 15 performance. Tickets are \$15 (\$10 for students and seniors 62 and over) and available online (at [pacificu.edu/Brahms](http://pacificu.edu/Brahms)) and at the door. The concert is free for PCC and Pacific students, faculty and staff.

For more information about the concerts, please contact Samuel Barbara at [Samuel.barbara@pcc.edu](mailto:Samuel.barbara@pcc.edu) or 971-722-7867 or go to [pcc.edu/musicrc](http://pcc.edu/musicrc).

**Total Office Solutions**

Get in touch with our workflow experts today for customized office solutions

**503-641-2000**

14747 NW Greenbrier Pkwy  
Beaverton, OR 97006  
[pacificoffice.com](http://pacificoffice.com)

PACIFIC OFFICE AUTOMATION  
Managed IT Services  
— PROBLEM SOLVED —

**MINDFUL TMS**

**A medication-free option for treatment resistant depression.**

THE CENTER FOR HUMAN HOLISTICS  
Keith G. Lowenstein, M.D., P.C. Physician  
15160 NW Laidlaw Road, #240 | Portland, OR 97229  
Phone: 503.601.7004 | Fax: 503.601.6876  
[www.humanholistics.com](http://www.humanholistics.com)

*Transcranial Magnetic Stimulation (TMS) is an FDA approved treatment for major depressive disorder.*

# Even your choices will have choices.

There is no one-size-fits-all retirement. That's why there is truly no end to the choices you'll find when you live at The Ackerly at Timberland. You'll have options upon options in wellness, fitness, dining, travel, social activities, and more. We invite you to find out more at a complimentary lunch and tour. Call (971) 217-9146 to schedule.



*It's More Than Retirement. It's Five-Star Fun.*

Portland • (971) 217-9146 • [theackerlyattimberland.com](http://theackerlyattimberland.com)

• A LEISURE CARE PREMIER COMMUNITY

**THE ACKERLY**  
AT TIMBERLAND



## For your **Retina, Laser** **or Cataract Surgery,** a comfortable experience matters.

PERSONALIZED EXPERIENCE | MINIMUM OFFICE WAIT TIME  
MAXIMUM TIME SPENT WITH PHYSICIAN

### **Specializing in:**

- Retina Specialist (injections, laser, surgery)
- Age related Macular Degeneration, Diabetic Retinopathy, Vein Occlusion, Retinal Tear or Detachment, Macular Membrane or Hole
- Cataract surgeon
- Glaucoma evaluation, management and laser treatment

*"Quiet office tucked in to an accessible area with plenty of parking. Comfy chairs, which didn't matter too much because I didn't wait long inside. They fit me in with less a week's notice and on Friday. Dr. Malihi was calm and thorough, and made the experience far less stressful. The front desk staff was fast, accurate, and polite. Everything was clean and smelled clean, which made me feel safer. Thank you for making a potentially stressful experience into something equivalent to a nice lunch at a complicated restaurant."*

- Kate H. 2019



**NELSI, INC.**

Northwest Eye Laser & Surgery Institute

**(503) 747-5044 • [nelsiportland.com](http://nelsiportland.com)**  
11786 SW Barnes Rd #270 | Portland, OR 97225