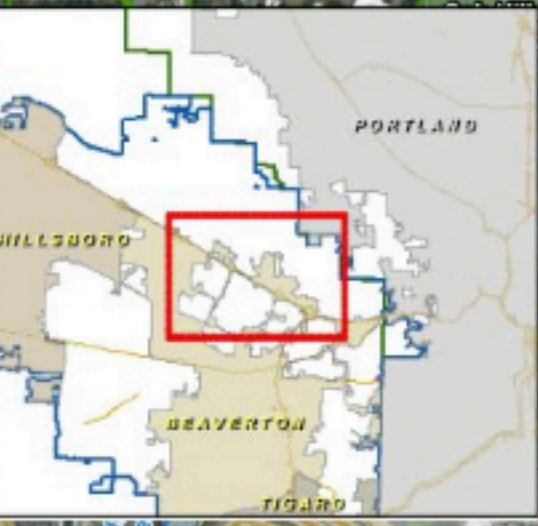
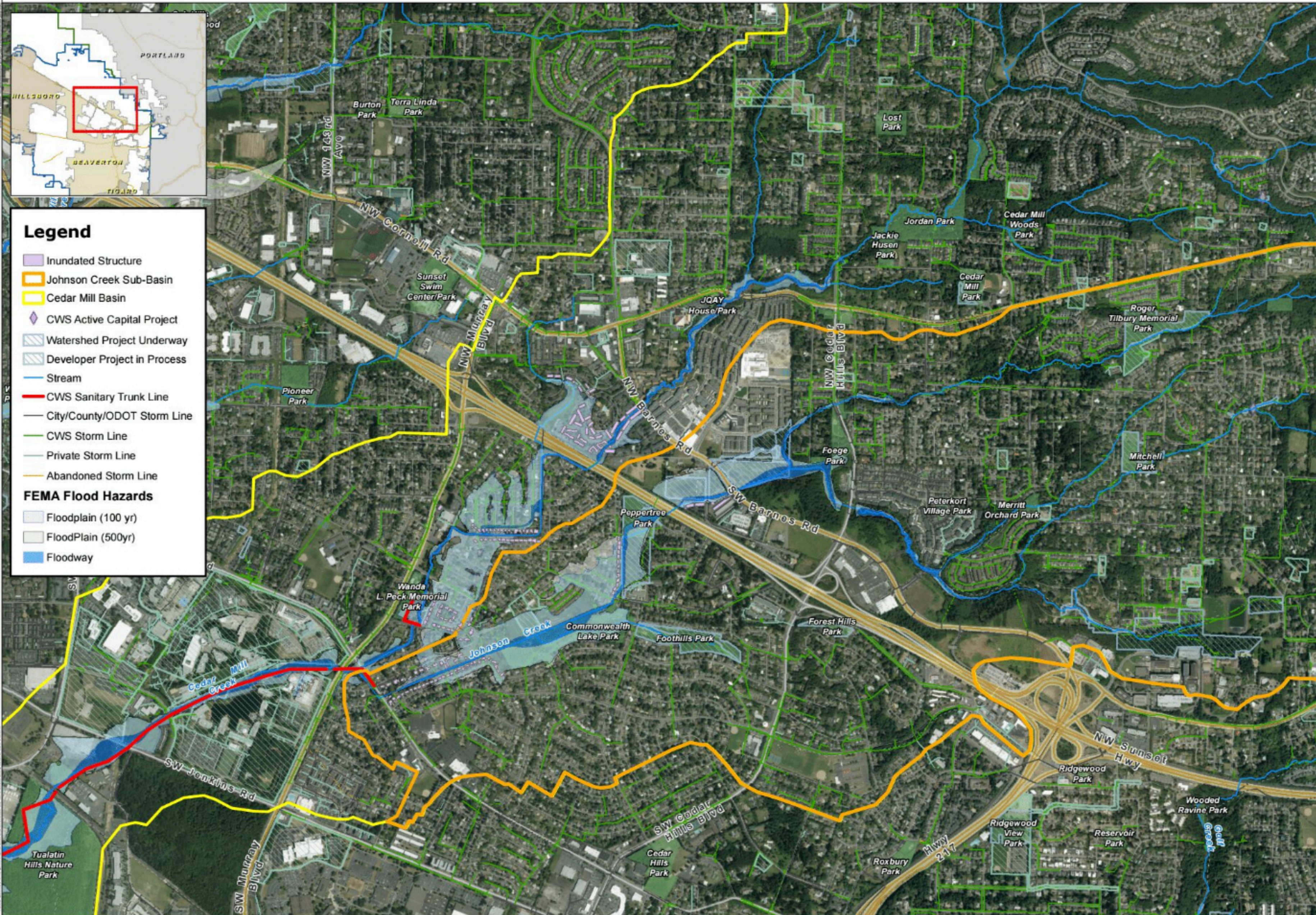


# Cedar Mill-North Johnson Watershed



**Legend**

- Inundated Structure
- Johnson Creek Sub-Basin
- Cedar Mill Basin
- CWS Active Capital Project
- Watershed Project Underway
- Developer Project in Process
- Stream
- CWS Sanitary Trunk Line
- City/County/ODOT Storm Line
- CWS Storm Line
- Private Storm Line
- Abandoned Storm Line

**FEMA Flood Hazards**

- Floodplain (100 yr)
- Floodplain (500yr)
- Floodway

Disclaimer: This product and the associated data is for informational purposes only and was derived from aerial photography. It is not intended to be used for flood insurance or other purposes. Users of this information should verify the accuracy of the information against local records. Clean Water Services does not assume any responsibility for errors, omissions, or outdated information. There are no warranties for this product. Hazards and service based findings are required using best available information but must be field verified and located before digging. Service users are warned to the fact that "unavailable underground utilities" as defined in ORS 91.001-0010 (C)(2). Information is not currently contained in the file and should be used for general reference only. All numbers of storm lines are shown with the exception of sanitary lines 24" and larger located below the city limits of Beaverton, Clatskanie, Forest Grove, Hillsboro, and Oswego, Portland, Sherwood, Tigard or Tualatin, need to be verified by contacting the jurisdiction of the utility. The location of structures would be appreciated. Clean Water Services, 1200 SW Tualatin Highway, Hillsboro OR 97122, (503) 680-1100.