



FREE

Cedar Mill News

Volume 17, Issue 11

November 2019



Like us on Facebook for timely updates

Sign up to get The News online: cedarmillnews.com/signup

SNR Report finds room for improvement

by Virginia Bruce

For many years, community members, and especially CPO representatives, have been asking Washington County to provide more information on how Significant Natural Resources (SNRs) are being protected during land use actions such as development and redevelopment of properties near streams and other natural resource areas. In response to these requests and others, the Board of County Commissioners (BCC) added a study to the [2019 County Work Plan](#). The draft report was published on October 4, 2019 and is [available to read online](#). Washington County's website has a [page covering the report](#).

What is an SNR?

[Section 422 of the Community Development Code](#) (CDC) defines several categories of SNRs. These include: Water areas & Wetlands: 100- year flood plain, drainage hazard areas and ponds, except those already developed; Wildlife Habitat: Sensitive Habitats identified by Oregon Department of Fish and Wildlife, the Audubon Society Urban

Wildlife Map, and forested areas coincidental with water areas and wetlands; Significant Natural Areas: Sites of special importance in their natural condition for their ecological, scientific and educational value; and Metro's Regionally Significant Fish and Wildlife Habitat Inventory Map: Areas identified as Regionally Significant Fish and Wildlife Habitat on Metro's Inventory Map.

Metro, the regional planning agency, published the [Urban Growth Management Functional Plan](#) to guide jurisdictions in developing within the UGB. The plan provides tools to meet goals of the 2040 Growth Concept, Metro's long-range growth management plan for the Portland metropolitan area. Title 13 of the plan, is called Nature in Neighborhoods, and aims to conserve, protect and restore a continuous ecologically viable streamside corridor system integrated with upland wildlife habitat and the urban landscape.

Key findings

Although Washington County was an early adopter of [Statewide Planning Goal 5](#) and is in

Continued on page 5

Much Ado About Nothing at Sunset

Fridays & Saturdays, November 15-16 & 22-23, 7 pm, Sunset High Auditorium

Under the direction of James Farmer, Sunset Theatre will present a fresh and modern take on Shakespeare's classic comedic masterpiece, now set in modern day Italy. Much Ado About Nothing interweaves the story of two couples and delivers a rich blend of life's relationships, folly, and deception throughout.

The audience will enjoy the show's many comedic elements, such as the hilarious battle of the sexes between headstrong Beatrice (Isabelle Packham) and Benedick (Declan Fooks), the romantic suffering of young Hero (Annika Zommerman) and Claudio



(Ricardo Guevara), good hearted scheming by the esteemed Don Pedro (Jack Talbott), the bawdy but well intentioned Margaret (Emma Gibson), and the loyal handmaid Ursula (Annala Swafford). All of this is rounded out by the hilarious farcical speeches of Constable Dogberry (Cole Friend), his bumbling watchmen, and the none-too-bright Lieutenant Verges (Dylan Calton).

General Admission: \$10 Adults, \$8 Students/Seniors. Group sales can be purchased through dramaatsunset@gmail.com Student Thespians are free with membership card.

Purchase Reserved Seating online: search.seatyourself.biz/web-store/accounts/shstheatre/buy-tix

Development News

Beaverton Planning approves Cedar Hills redevelopment

On October 23, the Beaverton Planning Commission reviewed the proposal for the massive redevelopment of the Cedar Hills shopping center, near the intersection of

Highways 217 and 26. Urban Form Development Co. is proposing six new buildings with approximately 56,388 square feet of ground floor

Current maximum building



height for Beaverton's SC-MUs is 60 ft., and Urban Form is requesting that it be increased to 100 ft.

Commission members heard from the Planning Department, the developer team, and several neighbors. As we have noted in the past, Beaverton's vision for this area is high-density. Neighbors were concerned about the abrupt difference in density compared to the surrounding residential areas, but the planners basically said, "Get used to it."

Neighbors also expressed concern about traffic and parking. Residents will have parking available under the buildings for their exclusive use. Parking in the central areas will be "shared," with a time limit on resident parking to keep the spaces open for visitors to the commercial spaces during business hours.



On Saturday, November 2, the body of a deceased middle-aged man was found in Cedar Mill Creek just south of the waterfall. The creek was low and filled with leaves, so reports that the body was floating were inaccurate.

On Monday, November 4, the State Medical Examiners Office performed an autopsy on the body found in Cedar Mill Creek. The male was identified as 41-year-old Brian Fredrick Simons. The State Medical Examiner says the manner of death is "accidental."

commercial space, 509 residential units, and 576 parking spaces.

They also asked Beaverton to amend its Development Code to increase the "Floor Area Ratio (FAR)" and the allowed maximum building height in the city's Station Communities Multiple Use (SC-MU) districts. If accepted, these changes will increase the allowed density in all the Beaverton areas with that designation.

FAR is the ratio of total floor space of the buildings in relation to the total area of the lot being developed. Beaverton's current maxi-

Continued on page 4

Cedar Mill Business Roundup

Do you have news or events or know of something that you would like to see covered in the Cedar Mill News? Please write to Virginia Bruce at info@cedarmillnews.com

Bethany Family Pet Clinic hosts a dual blood drive

Saturday and Sunday, November 16-17, 9 am-3 pm, 15166 NW Central Dr., Bethany

We are joining with DoveLewis and the American Red Cross to host our first-ever dual blood drive. Join us for the Best Friends Blood Drive—one day for humans, the next day for eligible dogs! Collections will all be done at BFPC.

Did you know that your dog can be a blood donor superhero? DoveLewis has an animal blood bank, which is the largest volunteer-based animal blood bank in the Pacific Northwest. Donor dogs must be between 1-6 years of age, weigh at least 55lbs, be current on vaccines and heartworm/flea prevention, have a gentle disposition, and be able to make a two-year commitment and donate four times per year.

Dog donors receive complimentary blood work and exam by a doctor, a complimentary emergency visit should one be necessary, donor parties and more.

If your dog has not been a blood donor, they must have their blood typed to see if they are a match. You can contact the blood bank at DoveLewis, or have your dog's blood tested on the day of our drive for future donations. Please allow

for a few weeks for the blood panel to be completed before donating. If your dog has already been typed and is eligible, they may make their regular donation right at BFPC!

If you are interested in being a human donor, use the American Red Cross app to get signed up! Just search out November 16 and choose a time slot between 9 and 3.

Saturday, November 16th Red Cross blood donor bus is coming to Bethany Family Pet Clinic between 9-3. Sign up on their app or call the clinic at 503-614-9061

For more information, please visit our website: bethanyfamilypetclinic.com/blood-drive

bethanyfamilypetclinic.com/blood-drive

A Child's Way Preschool Open House

Thursday, November 14, 1-2:30 pm, 12755 NW Dogwood St.

Join us for an open house! Tour a classroom and chat with teachers and directors about our curriculum and philosophy. Your child is welcome to attend and participate in activities available in the classroom or out on our beautiful playground.

A Child's Way is a nonprofit, NAEYC accredited preschool program serving young children by providing a developmentally based curriculum which enhances self-esteem and promotes problem solving skills. We believe in a hands-on learning approach rich in opportunities to work with science, technology, engineering, arts, and math. Children are encouraged to be independent, build on positive social interactions, and value what is beautifully unique about themselves and others.

Registration for fall 2020 will take place for new families at our second Open House to be held on Saturday, January 18 from 10 am-noon. Registration is on a first come, first serve basis. Please contact us with questions at achildsway@gmail.com or 503-644-8407.



Ackerly public events

Providence Medicare Advantage Plans meeting

Wednesday, November 20, 4 pm. The Ackerly at Timberland, 11794 NW Cedar Falls Dr.

Learn about medical, dental, and vision plans. RSVP is required. Please call 503.350.3400.

Senior Fitness Class

Wednesday, November 13, 27, December 11, 2-2:45

Fitness class geared toward 55+ age group. Focus is stretch, strength and maintaining or increasing mobility and balance. RSVP is required. Please call 503.350.3400.

Touchmark public events

The following events at Touchmark in the West Hills are open to the public. RSVP at 503-954-1640.

Shining a Light on CBD

Tuesday, November 12, 11 am, 840 NW Touchmark Way, RSVP required.

People take or apply CBD to treat a variety of symptoms, but its use is confusing and, for some, controversial. Kryzia Olsen, N.D., will shed some light on CBD: what it is, its use and its effects on the human body.

Parkinson's Support Group

Wednesday, November 13, 5:30 pm, RSVP required.

This support group meets the second Wednesday of each month and is open to those living with Parkinson's as well as family members or friends.

Culinary Passport: Thailand

Friday, November 15, 11:30 am, RSVP required.

Located in Southeast Asia, Thailand is a favorite destination for travelers. Thai food is a major attraction along with the country's beaches, temples, ancient ruins, and elephant sanctuaries. Come experience the tastes and more of this tropical paradise.

What is Your Microbiome and What Does It Do?

Friday, November 15, 4 pm, RSVP required.

Jeff Horacek, M.D., will talk about the microbiome and its role in maintaining health and sometimes contributing to disease. He'll also discuss the fascinating cutting-

edge medical research underway.

Lunch & Learn: Surviving & Thriving Through the Holidays with Jeanette Leardi

Monday, November 18, 11 am, RSVP required.

At any time of year—especially between Thanksgiving and New Year's Day—holidays give people a chance to take a break from their ordinary activities and refocus on their values and relationships. They can also be problematic times that create loneliness, anxiety and stress. Enjoy eating lunch with others and gaining helpful tips for anticipating, celebrating and reflecting on the holidays.

What's the Difference Between the Canadian and U.S. Health Systems?

Monday, November 25, 3 pm, RSVP required.

Joseph Copeland, M.D., works in emergency medicine in Vancouver, BC. He is visiting the U.S. and will present the differences between the American and Canadian health care systems.

Caregiver Dementia Support Group

Wednesday, November 27, 5:30 pm.

This supportive group of individuals meets the fourth Wednesday of each month to share the challenges of living with and caring for someone who has dementia.

Pharmaca Autumn Spa Day

Saturday, November 9, 1-5 pm, 240 NW Lost Springs Ter.

There will be 20% off everything (not including prescriptions). We are featuring a world renowned Israeli skin care line, Lavidio, for our mini-facials. Our own esthetician, Alicia, will be offering the mini-facials, and we are raffling off a basket of Lavidio products worth \$122. If you sign up for a free mini-facial, you will get two entries for the raffle basket. Treat yourself to some self-care as the seasons change and learn about exceptional botanicals that hydrate, soothe and heal your skin. Heavenly!

Pharmaca News

Flu shots are here and so is the flu season. We have the quadrivalent flu shot, the 60+ flu shot and the Flublok for those with an egg

Continued on page 10

The Cedar Mill News © 2019

Published monthly by
Cedar Mill News LLC
PO Box 91061
Portland, OR 97291
Online: cedarmillnews.com

Copy Editor: John Ramey

Business & Community News Editors:
Cami Villanueva, Genevieve Coblentz,
Shawna Muckle

Website Production: Georgia Stanley

Publisher/Editor: Virginia Bruce

503-803-1813

info@cedarmillnews.com

Printed by Pacific Office Automation

Opinions expressed in this publication are not necessarily those of its advertisers.

Lockout? Lockdown? What's the difference?

Information from Beaverton School District and Washington County Sheriff's Office

Cedar Mill recently had a couple of incidents that required action at local schools. An altercation between roommates involving a gun, on Old Quarry Road near 119th, required a lockout at Bonny Slope Elementary. Another incident involved a thief who took wine and other items, and an employee raincoat, from Safeway resulted in



a lockout at Sunset High. The thief ran through the neighborhoods and it was feared he might enter the campus. Both incidents resulted in arrests without further danger to students or the public.

It must be so stressful on students, teachers, and parents, to deal with danger in the neighborhoods, in light of the horrible mass violence incidents constantly in the news. So we looked to the school district and the Sheriff to figure out what to expect from these situations.

You've heard the terms "lockout" and "lockdown." While the two terms sound somewhat similar, they mean very different things. It can help ease your anxiety as a parent to know the difference.

A lockout means there is a possible threat outside the school. Most often, this is due to police activity in the area or the neighborhood. Police might be searching for

Audubon Winter Break Camp

We have exciting outdoor and indoor adventures for 1st through 8th graders during the school break. Sign your child up for an experience in nature they won't forget.

Whether your child wants to go adventuring on Mt. Hood on an overnighter at our brand new Marmot Cabin, learn the art and craft of candlemaking, visit a wolf sanctuary, make nature inspired art, or search for raptors, we've got the perfect camp for the artist, adventurer, and wildlife lover in your family.

[Learn more and register here.](#) Classes fill quickly!

a suspect in a crime, or someone might have spotted a person wanted for questioning. During a lockout, it is business as usual inside the building. If students are at recess, or outside for some reason, they are brought inside, the doors are locked and classes continue. The District does not typically send out parent notifications for lockouts, since they are most often due to police activity in the neighborhood and are usually resolved quickly.

A lockdown means there is a possible threat inside the school. This is not business as usual. Hallways are cleared, classroom and office doors are locked, lights are turned out. Students and staff are instructed to stay quiet and out of sight.

All of our schools can be put in lockout or lockdown at the touch of a button. A message with instructions will play over the school's intercom system. BSD has produced several YouTube videos to help educate students, parents and staff:

- [Lockout vs Lockdown](#)
- [Standard Response Protocol: Lockdown & Evacuate](#)
- [BSD Safety PSA #1](#)
- [BSD Safety PSA #2](#)

If you get a notification about a lockout or a lockdown, the first place to check for reliable information and updates are the school and District webpages. There will be a page pop with information that "pops" onto the center of the screen. Also monitor the District's social media feeds: [Facebook](#) • [Twitter](#).

Do not call or go to the school. Doing so could put you or others in danger. We will communicate with you as soon as we have more information to share.

A lockdown may lead to a controlled release or parent reunification. Please watch our [Parent Reunification video](#) to familiarize yourself with this process.

League of Women Voters of Washington County

Monday, November 11, 3 pm, Shute Park Library, 775 SE 10th Ave.

At our next meeting, we will be hearing from a special guest, Steve Berger, Washington County Corrections Director and member of the Public Safety Coordinating Council.

SUNSET HIGH SCHOOL PRESENTS...
WILLIAM SHAKESPEARE'S

MUCH ADO ABOUT NOTHING

NOVEMBER 15-16, 22-23 M-F 8-6 pm • Sat 1-6 pm • Sun 11-5 pm
7:00 PM

SUNSET HIGH SCHOOL AUDITORIUM
13840 NW CORNELL ROAD
PORTLAND, OR 97229

TICKET PRICES:
ADULTS \$10
STUDENT/SENIOR \$8
RESERVED SEATS AVAILABLE ONLINE
HTTP://SUNSETSHSCHOOLTHEATRE.YOU.SITE.COM
OR CALL 503.620.6600

APPROVED BY
COURTESY KATHRYN, ANNA, JESSICA, & DANA
DANA GARDNER FAMILY THEATRE

Refinish First LLC
Restore, Refinish, Paint and Reface

2017 Angie's list SUPER SERVICE AWARD
Previous awards 2013-16

Visit our Showroom! Monday-Friday 9-5 and by appointment
Call for a free estimate 503-620-5541 www.refinishfirst.com
Thank you Cedar Mill for supporting our business for 6 years! Lic #: 208312

CCB #9252

NOYES DEVELOPMENT CO.
Presents
CREEKVIEW RIDGE

65 New Homes
Located at 120th & NW Laidlaw Road

Carefully Crafted.
Meticulously Finished.
Designed & Constructed for Life.
noyesdevelopment.com

Development News, continued from page 1

increased ridership at this location, particularly with the new Peterkort parking lot coming on line soon.

The decision on the development is final. The recommendation to approve the zoning amendments will go to the full Beaverton City Council for approval at a future meeting.

Plans have been modified somewhat since we first shared the news of the development. The developer has obtained an option on the former gas station at the northwest corner and is proposing to make that a THPRD park.

Construction will take 18-20 months. Several neighbors requested that access to business on Park Way be kept clear during that period.

Dale developer requests modification of conditions of approval

A proposal for a 7-lot subdivision at 560 NW Dale Ave. was submitted to the county earlier this year. A hearing was held on October 17, 2019. The applicant is requesting a modification of the Conditions of Approval to change the delineation of the protected area at the eastern side of the property, which includes a segment of Cedar Mill Creek.

At issue is the Goal 5 map (see the SNR article, page 1). Metro issued maps in 1996 outlining "Goal 5 Resource Areas" to help jurisdictions and developers to meet the state's requirements for protections of natural resources. The developer contends that the map is wrong and that the protected area should be smaller. The developer submitted a letter from Tim O'Brien, Principal Regional Planner at Metro, who suggests that

"the inclusion of a refined local map verification process to verify the specific location of habitat areas" is appropriate in this case.

County LUT staff concurs with this interpretation, saying, "The wildlife biologist generally concurs that the mapped resources are not accurate and should not be mapped as Goal 5 Resource." They are recommending approval of the development.

Some neighbors are concerned that this approach will impact the floodplain and riparian (stream) areas. The property includes a 25-year Drainage Hazard Area (DHA) but the developer and his consultant engineer say that all development will be outside the DHA.

Over 13,000 square feet of the property will be set aside as an open space tract, and will be enhanced with native planting, from their current "degraded to marginal condition."

It usually takes several weeks for the hearings officer to respond. We'll follow up with this when we learn more.

Two new Laidlaw developments approved



"Laidlaw Meadow" and "Laidlaw Meadow Estates" will add 41 homes to Bonny Slope on the north side of Laidlaw Rd and east of Saltzman. They were done through separate development applications but the subdivisions will be coordinated.

Originally approved in August, the decision for the western segment was revised and re-issued on October 30 because of a problem with the connection to 124th.

Laidlaw will need to be realigned adjacent to the development to meet county standards. The applicant is required to provide plans for the realignment. Construction may be required if the applicant is able to acquire off-site right-of-

way (ROW) from another property owner. If that is not the case, the developer will have to cede ROW and pay "fee-in-lieu" for the future construction.

"April Crest" proposed 13-lot development off 119th

A neighborhood meeting was held on October 8 to present a proposed residential development east of 119th opposite Vallevue Dr.. PDG Group is representing CTH Investments. The property, slightly over 2.5 acres, is zoned R-6. The eastern side is protected natural area, including wetland and a conservation easement, leaving developable space for 13 lots.

Homes will all be on a private street off 119th. A half-street improvement will be built along the east side of 119th, with a bike lane, street trees, and a sidewalk. Once the development plan is submitted to Washington County, it will be open for comments.



Saltzman development approval appealed

The 11-lot subdivision proposed for the west side of Saltzman Road between the two ends of Bauer Woods Drive was approved in mid-October, but we just received word that an appeal has been filed. We have no details.

The hearing for the appeal will be on November 21, 11 am, in the first floor auditorium of the Public Services Building, 155 N. First Ave, Hillsboro.



The parking lot adjacent to the Sunset Transit Center is under construction. Peterkort Company said they don't know when it will be open.

Inside WashCo Radio

Listen to our interviews anytime on the website: inside-washco.org/interviews/

They are released on the website and available for podcast subscriptions on the Monday of the week they'll be broadcast on the radio. Interviews are archived for listening at any time.

Friday, November 1, 1:30 pm

Features: Justin Brecht, representing Oregon Firearms Federation. This podcast episode will replay Sunday, November 3, 5 pm
Friday, November 8, 1:30 pm

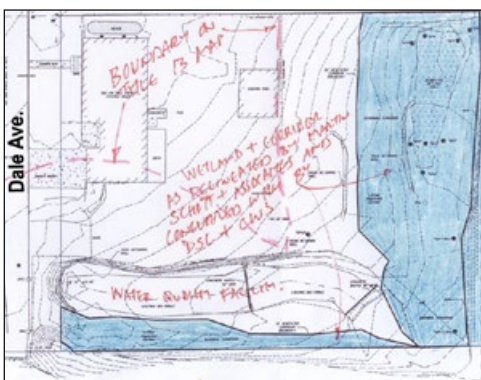
Features: Hilary Uhlig, Director, Moms Demand Action. This podcast episode will replay Sunday, November 10, 5 pm
Friday, November 15, 1:30 pm

Features: Raziah Roushan, Executive Director, Tualatin Valley Creates This podcast episode will replay Sunday, November 17, 5 pm
Friday, November 22, 1:30 pm

Features: Felicitia Montebalanco, Board Chair Tualatin Valley Parks & Recreation. This podcast episode will replay Sunday, November 24, 5 pm
Friday, November 29, 1:30 pm

Features: Cindy Cosenzo, Coordinator, Age Celebration. This podcast episode will replay Sunday, December 1, 5 pm

We will take the month of December off and be back with a full schedule in January.



The developer submitted this drawing with his request to modify the SNR area

CPO 1 November 12 meeting

Tuesday, November 12, 7-9 pm, Leedy Grange Hall, 835 NW Saltzman

First, we'll hear from the people working on Cedar Grove Low Income Housing. [Community Partners for Affordable Housing](#) (CPAH) is developing a [four-story apartment building](#) at the southeast corner of Cornell and Murray. They are breaking ground this month, and will give us an update on the project.

Then, we'll find out about Washington County's new Significant Natural Resources report.

Are you concerned about protections for natural resources as development occurs in Washington County? CPO leaders around the county have been asking for more information about how "Goal 5" protections are being implemented in the development review process, particularly on lands with wildlife habitat.



Significant Natural Resources

Land Use and Transportation has published a draft of an "Issue Paper" and will present their findings and ask for community input. The Report shows some significant deficiencies in county protections, and has suggestions for improving them. Read more about it in the article starting on page 1.

Road News

Thompson Road realignment project begins

Neighbors in the Arbor Creek subdivision began receiving notices

that surveying would begin in anticipation of this project. They



Approximate location of the newly aligned Thompson Road

SNR Report, continued from page 1 compliance with Metro Title 13, over time, amendments to the County's Community Development Code have altered and confused the original intent making it difficult for residents and developers to understand.

The County must amend Section 422 to modify standards that are not clear and objective, as identified in a recent Land Use Board of Appeals decision. [LUBA [Decision 2018-045](#), saying that the county's rules were not "clear and objective" and [2018-089](#), denying the county's appeal]

Finally, a Tree Code?

It's very important to note that for the first time, Washington County is acknowledging the possibility of implementing a "tree code." Under the previous County Chair, efforts were consistently shut down, as the report notes.

"Over the years, community members and the CCI have advocated for changes to the County's tree removal and protection requirements and have requested the County develop a 'tree code' with more stringent tree protections. County residents, especially in Cedar Mill, Bull Mountain, Metzger and more

recently Cooper Mountain have requested the County require new developments to retain more trees onsite or mitigate for their loss by planting new trees elsewhere onsite or at a nearby location offsite...



Protected wildlife habitat allows this Great blue heron to live successfully in Washington County. Photo: Jim Long

"Due to a combination of limited staff resources and low Board priority, development of new tree code standards was not elevated to a Tier 1 task on the LRP Work Program in 2011 or later years."

Now even some developer groups support "some form of tree protection regulations as a replacement for the unclear SNR requirements. Several developers/consultants believed tree protection/preservation standards to satisfy mitigation requirements on sites with SNRs would provide a clear and objective path and allow

for more certain outcomes through the land use review process."

Next steps

Staff recommendations include an overhaul of the CDC to revise subjective standards, bring maps and inventories of resources up to date, and improve specificity for SNR impacts and Habitat Reports.

CPO 1 will have an SNR Report presentation from the county at its November 12 meeting. Public input will be taken until November 22, and "staff will incorporate comments and finalize the Report, including options and recommendations." The final recommendations will go to the BCC for potential inclusion

in future Work Programs. Actions may include revision of CDC standards through Ordinances.

Plan to attend the November 12 CPO meeting, either in person or by viewing the [live stream on our Facebook page](#), and bring your questions and comments. The report is, for the most part, clearly written and interesting, so if you care about natural resources in our beautiful county, take a little time to [read this important report](#) and follow its effects.

You can also visit the "[Online Open House](#)" and comment there.

were told that construction would begin summer 2021 and finish summer 2022. The project is in the early design phase.

When the Arbor Creek subdivision was built, Kenny Terrace was constructed to be the ultimate location for Thompson. When THPRD acquired the old Lehman farm property for an eventual park, originally we were told that THPRD would have to pay for the road realignment. Eventually the county accepted the responsibility and this project was put into the MSTIP budget.

The existing Thompson Road has two sharp curves. Increased traffic volumes during peak hours create long backups from traffic waiting to turn left. Bike and pedestrian facilities are needed.

The existing Kenny Terrace is three lanes, with bike lanes and sidewalks. Thompson Road will be connected to Kenny Terrace west of Saltzman Road and north of

Hartford Lane to create a new traffic alignment that avoids two sharp curves. The new Thompson Road alignment will be three lanes (one travel lane in each direction and a center turn lane) with bike lanes and sidewalks. Improved storm drainage and street lighting will be installed.

Updates will be available [on the LUT site here](#). We were told that a presentation on the project will be given at the January 12 CPO 7 meeting, and CPO 1 members may attend. We'll share info closer to the date.

This approximately \$6 million project is funded through the [MSTIP Bonding Cost-sharing Program](#).

Viva Village Events

For a complete list of November events go to [vivavillage.clubexpress.com](#); click on Calendar.

Celebrate Locally! Shopping



Your local Disney travel specialist!



Sonia Bhagwan, MBA
Travel Agent



Fall special!
Book by November 15 to get a \$50 Disney Gift Card!

503.995.4719
MandMMagicalAdventures.com/soniabhagwan.html

Bethany Village Tree Lighting

Tuesday, December 3, 5:30-8 pm, Bethany Village Plaza

Join us for our annual Tree Lighting Ceremony to ring in the holidays! Enjoy performances from Findley Elementary School, Westview High School, Kozy Kids Enrichment Center LLC and sit with Santa and Mrs. Claus. Countdown to the tree lighting will take place promptly at 5:30 P.M.

Second Edition Resale features Holiday Décor

Starts Monday, November 4, 12 pm, 12505 NW Cornell Rd. #13.

Stop by to see our selection of lovely holiday-themed home goods!

Holiday Showcase

Saturday, November 23, 1-3:30 pm, Cedar Mill Library mezzanine.

Join us for a showcase of party apparel with coffee and cookies!

Beaverton Night Market

Fridays 4-10 pm, Saturdays-Sundays 2-10 pm, November 30-December 22, 4500 SW Watson Ave, Beaverton

Indoor pop-up store featuring ethnic crafts and goods. Learn more at BeavertonOregon.gov/Winter-NightMarket



Holiday Art and Craft Fair

Wednesday, November 20, 10 am-5 pm, Sunset Athletic Club, 13939 NW Cornell

Fine art and imaginative gifts by hand-picked, local artists. Find practical and beautiful items for everyone on your list. A portion of sales will be donated to Oregon Food Bank. See photos [on the web-site here.](#)

Skyline Grange Artisans Holiday Arts Fair

Saturday, November 16 & Sunday November 17, 10 am-4 pm, Skyline Grange Hall, 1275 NW Skyline Blvd Portland

Skyline Grange Artisans invite you to their ninth annual showcase of local arts and crafts! More than 20 local artisans will have



Beaverton Tree Lighting

Friday, December 6, 5 pm, City Park

Join Santa Claus and Mayor Denny Doyle at the Annual Tree Lighting Ceremony! Activities will begin with s'mores, book giveaways, and photos with Santa. Performances will begin at 6 p.m. and the Tree Lighting Ceremony will be at 7 p.m.

Visit BeavertonOregon.gov/treelighting for details. In case of inclement weather, check the city's website or call 503-526-2559 after 2 p.m. on the day of the tree lighting for updated information.

booths this year showcasing a wide variety of locally handmade items including jewelry, accessories, pottery, glass, journals, home décor, paintings, woodworks, essential oils, fiber arts, yard art, handmade preserves, dog toys, and goat milk soap. You'll be sure to find that special gift for someone on your holiday list.

There will also be food, snacks, coffee and tea available for a suggested donation, available downstairs in the Grange where tables will be set up. Be sure to buy some tickets for the raffle and have the chance to win one of the handmade items donated by the Artisans and gifts from local businesses.

PCC Rock Creek Ceramics Sale

Monday-Wednesday, December 3-5, 9 am-6:30 pm, PCC Building 5, Rm 122 (new cafeteria)

Handmade pottery, one of a kind created by PCC Ceramic artists at the most affordable prices.



GET A GRIP

SAVE NOW ON THE BEST TIRE BRANDS!



503-643-6767
301 NW Murray Blvd




Experience an exceptional beginning.

Our esteemed Montessori program is accepting applications for preschool.

msb.org

Support the local businesses that support the News—they make it possible! Tell them you saw it in The Cedar Mill News!



Bring in this ad for **10% off** through November 30, 2019

Hours
Mon-Sat 10 am-9 pm
Sun 10 am-8 pm

WESTERN OREGON DISPENSARY™
760 NW Dale

ng, Events, Connexions...

29th Annual Big Horn Brass Holiday Concert

Sunday, December 8, pre-concert: 6:10 pm, Brass Concert: 6:30 pm, St Matthew Lutheran Church, 10390 SW Canyon Rd., free

This renowned brass ensemble creates the perfect opportunity to hear some of the world's greatest holiday and festive music. The special guest is local jazz-blues vocalist, LaRhonda Steele. A pre-concert will be performed by the St Matthew Exaltation Handbells! The concert will begin with a candle lighting as part of the Compassionate Friends worldwide candle lighting.

This is the 29th consecutive season the Big Horn Brass has



performed a community concert at St Matthew. This 16 member ensemble spreads its sparkling brass tones through an endearing mix of holiday favorites. From traditional carols to festive arrangements for brass, this concert will warm the hearts of young and old.

This year's concert is a gift to the community from the Erik Weswig Memorial Fund, the Beaverton Arts Commission, the St. Matthew Lutheran Church Foundation, and other supporters of holiday music. Erik enjoyed this concert as part of their family tradition and played the Baritone at Sunset High School. In his memory, a Memorial Fund was established to support local events that he enjoyed. Donations for future concerts will be gratefully accepted.

For additional information please visit ErikWeswig.com

Helvetia Farm Market Thanksgiving Party

Saturday, November 23, 9 am-5 pm, 23137 NW West Union Rd.

It will be a lovely day to come say hello and see our new market! Complimentary Holiday Drinks, Treats & Local Vendor Fair!

Marion Acres pasture-raises

poultry. Their new Helvetia Farm Market features their products, along with exclusively local food and craft products from the surrounding Helvetia community and beyond.

Visit them on their website or social media to learn more. marionacres.com/

Christmas tree recycling

Boy Scout Troop 207

December 28 & 29, January 5 & 6, 9 am-3 pm all days, old Bales Thriftway parking lot, 12675 NW Cornell Rd

To request curbside pickup, please visit treecycle.ortroop207.org, and leave your name, address, and phone number. Attach door hanger provided (or your own envelope marked "Troop 207") to tree with check payable to "Troop 207". Suggested donation for curbside pickup is \$15 per tree or \$10 per wreath/garland.

To drop off, please bring to the location above. Scouts will be happy to help unload your car. Suggested donation for drop-off is \$10 per tree or \$5 per wreath/garland.

[If you want to include your fundraising tree collection event in the December issue, please send info to info@cedarmillnews.com]



Eggnog at Schoch Dairy

Starting November 11, Shoch Dairy will have the most delicious eggnog available at their dairy store, in addition to whole milk and "chocolate" milk.

They're located at 24335 NW West Union Rd., just west of Helvetia Rd. and across from the school. The dairy market is down the long driveway, past the homes. Learn more on their website and sign up for Facebook updates!

please join us for our
ANNUAL HOLIDAY SHOWCASE!
Saturday, November 23
1-3:30 pm
Holiday Clothing & Décor
Sparkly Jewelry
Refreshments

2nd edition resale
donate • shop • support

12505 nw cornell road
(at the east end of Cedar Mill Library)
All sales benefit
Cedar Mill Library Assn.

Read The
News online:
cedarmillnews.com

HELVEIA FARM MARKET NOW OPEN!

\$5 off any purchase of \$20 or more
(Expires: 12/20/2019, must present coupon)

M-F 8-6 pm • Sat 10-6 pm • Sun 11-5 pm
23137 NW West Union Rd
marionacres.com

Be your best elf!

- ★ Donate
- ★ Shop
- ★ Volunteer

Habitat for Humanity | ReStore Home Improvement Outlet
PORTLAND • BEAVERTON • GRESHAM • WANCOLVER
pdxrestore.org

dogood

giveguide.org/#newavenuesforyouth

NEW AVENUES for Youth

2nd edition resale

Find Your Holiday Decor Ideas Here!
Opens Monday, Nov. 4, noon

12505 NW Cornell Road
(at the east end of Cedar Mill Library)
Sales benefit Cedar Mill and Bethany Libraries

SCHOCH DAIRY AND CREAMERY

Chocolate too, and eggnog for the holidays!
Fresh milk daily, 7 am - 9 pm
24335 NW West Union Rd • 503-647-2638
schochdairy.com

HOLIDAY ART & CRAFT FAIR

Sunset Athletic Club

WEDNESDAY NOVEMBER 20th
10:00 am - 5:00 pm

FREE ADMISSION!
OPEN TO THE PUBLIC

Fine art and imaginative gifts by hand-picked, local artists
Sunset Athletic Club
13939 NW Cornell Rd., Portland
503-645-3535
www.sunsetac.com

We are Oregon House District 33

by Shawna Muckle, CMN intern

Cedar Mill's district in the Oregon House, District 33, has its first open seat in 18 years. Several new primary candidates have already come forward for the upcoming May 2020 primary election.

Comprised of urban, suburban, and rural areas, Oregon House District 33 encompasses much of northwest Portland, extending to a chunk of the US-30 corridor in Portland's northwest industrial district and the Willamette River. It contains several

surrounding suburbs, including unincorporated parts of Washington County such as Cedar Mill, Helvetia, and north Bethany. Cedar Mill is located roughly in the center of District 33.

Mitch Greenlick, District 33's longtime representative, announced his retirement prior to the 2019 legislative session, launching an open-seat election in District 33 for the first time in 18 years. Greenlick was first elected in 2002 after a district redrawing, which moved his jurisdiction from Oregon House District 7, where he served one term, to House District 33. He took office as District 33's representative in 2003.

Greenlick has earned a reputation in the Oregon House for his experience and extensive credentials surrounding healthcare. Prior to legislating, Greenlick maintained a 30-year career in health and medicine research, serving as the director of the Kaiser Permanente Center for Health Research until 1995. In 2005, Greenlick received the lifetime achievement award from Oregon Public Health Association for his legislative work improving access to adequate healthcare for Oregonians.

In the initial years of his tenure, Greenlick quickly asserted himself as a healthcare-focused reformer, championing and/or authoring several bills focused on fixing flaws in Oregon's healthcare system and improving public health regulations.

"When I first started, the uninsured rate was about 18%; now it's about 5%," Greenlick said. "I had [HB 2116] in 2009 that got health insurance for 100,000 children in

one year via the Healthy Kids insurance program. That was a defining moment for me."

Greenlick ascended to chairmanship for the House Committee on Healthcare in 2007, chairing the committee for 12 years until he stepped down in early 2019. He

a state."

During the short legislative session in early 2019, Greenlick became the center of controversy for a comment he made while hearing testimony from a representative for a pharmaceutical company arguing against a bill that would require 60-days notice prior to any increase in prescription drug pricing. Greenlick berated the representative, saying, "I've been listening to your guys' comments for 16 years. Generally, you're not stupid. In this case, you appear to be stupid."

House Republicans accused Greenlick of abusing his power as chair of the healthcare committee and creating a discourteous legislative environment. Though Greenlick quickly issued an apology, House Speaker Tina Kotek was eventually prompted to remove Greenlick from his chairmanship of the healthcare committee. He still remains a committee member.

Greenlick, who is 84, announced he would not seek a tenth term in late 2018.

Primary elections for House District 33 will occur on May 19, 2020, alongside many other local and statewide primaries. The filing deadline for candidates is March 10, 2020.

So far, three candidates, all Democrats, have filed for candidacy, and a fourth has announced plans to run. Primaries are segmented by party, meaning only one Democrat will proceed to the general election.

District 33 is a heavily Democratic district and hasn't voted a Republican into office since Vic Backlund, who ran unopposed in 2000. Upon Greenlick's entry into office in 2002, voters have swung heavily to the left, with Greenlick consistently garnering over 65% of the vote since 2012. In 2018, Greenlick trounced Republican candidate Elizabeth Reye 75.86% to 23.97%.

This article is the first in a series educating Cedar Mill voters on the upcoming open-seat District 33 election. Future articles will include features on candidates and their platforms, major events in the race, and additional information on the May primary elections.



Oregon House District 33 stretches from the Willamette River to Highway 26

also sits on the House Judiciary Committee. One of Greenlick's most publicized efforts throughout his tenure has been lobbying for the adoption of an amendment to the Oregon constitution that categorizes healthcare as a human right.

In 2018, Greenlick introduced HJR 203, a constitutional referral that calls upon voters across the state to amend Oregon's consti-



tution by identifying "access to effective and affordable health care" as a "fundamental right," according to a press release from Greenlick's office. The referral passed the House in 2018, but it stalled in committee in the Senate.

"The constitutional amendment has failed four times," Greenlick said. "I'm going to try once more this next session to affirm healthcare as a universal right. This is something we're struggling with as we move ahead towards universal access and acknowledging that as

Support the
Sunset High School
Marching Band & Auxiliary
Bottle/Can Drive
Saturday, November 9
11:30 am - 12:30 pm
At Sunset High School, outside the band room
(west side of the school, facing the stadium)
**Please drop off any redeemable
non-crushed cans &
plastic and glass bottles**

**FREE
Senior Home Placement**
Call us first!
We will compare, tour, and make
recommendations based on
health needs, lifestyle, location
preference, and budget.
Our services are FREE!

Living Well
Bess Lindahl • 971-330-4743
LivingWellSenior.com

**\$\$\$ CASH \$\$\$
FOR
JUNK
CARS**

**FRED'S
auto removal**
Call or text 503-810-3061
FredAutoRemoval@gmail.com

Estate Planning
that focuses on you,
not just your money.
CRESCENDO LEGAL
Schedule a
Family Wealth Planning Session
today and get it for free (\$750 value).
Call 971-220-7171 to schedule
or visit crescendolegal.com

Your opinion counts

Many public agencies ask for public feedback on their projects and proposals. You may wonder why you should take time to attend a meeting, answer surveys, participate in online "open houses," and write to elected officials. The truth is that a very small percentage of the public responds, but those responses are noticed and taken into account by the agencies, for the most part. *Make sure Cedar Mill's voice is heard loud and clear!*

Here are some opportunities for you to make a difference this month.

NOTE: if you read The News on paper, it's hard to use the links! You can go to the [CMN website](#) and read the stories online where the links will take you to the surveys!

Washington County Budget Listening Tour

The Washington County Board of Commissioners would like to hear from community residents to inform their budget priorities over the next several years. Four separate, hour-and-a-half listening sessions are scheduled in each of the four commissioner districts throughout the month of November.

Each session will provide an opportunity for information gathering as well as discussion and input on how county government should prioritize budget spending. All are welcome at any or all of the sessions, which will include light refreshments. Language interpretation is also available by contacting 503-846-6288 at least one day in advance of the chosen session.

[Ed note: We see improving staffing at LUT as a big priority! We have noticed that several important developments in our area have chosen to annex into Beaverton before they develop their properties. Timberland, Cedar Grove, and the Cedar Hills center are a few examples. Delays due to lack of sufficient staffing in the Planning Department of LUT is often cited as one of the reasons. This is also given as a reason for not tackling important issues like tree protection, etc.]

All sessions begin at 7:30 pm and are free. Online registration is strongly encouraged through the following links:

Wednesday, November 6, Aloha Library, [Register](#)

Wednesday, November 13, Hillsboro Brookwood Library, [Register](#)

Monday, November 18, Meadow Park Middle School, [Register](#)

Monday, November 25, Tigard Library, [Register](#)

Those who are unable to attend may also submit their ideas for top budget priorities by sending an email to CAO@co.washington.or.us with the subject line "Budget Tour."

Comment on Significant Natural Resources Assessment by November 25

(See SNR article, page1)

Cornelius Pass and Germantown intersection online open house

Visit and share your feedback through November 8. [Enter the open house](#)

A traffic study was completed to evaluate interim (immediate) safety improvements to the Cornelius Pass/Old Cornelius Pass, Cornelius Pass/Germantown and Old Cornelius Pass/Germantown roads intersections.

Cornelius Pass and Germantown roads are heavily traveled north of U.S. 26 that meet at a "T" intersection without signals. Traffic volumes, speed, and challenging intersection geometry contribute to traffic crashes at this intersection. Nearby Cornelius Pass/Old Cornelius Pass and Old Cornelius Pass/Germantown road intersections also present safety concerns.

The estimated \$1.1 million project is funded through the [Traffic Impact Fee \(TIF\)](#) and [Transportation Development Tax \(TDT\)](#). Proposed improvements include:

Traffic signal at Cornelius Pass/Old Cornelius Pass roads intersection

Limiting Germantown Road (Old Cornelius Pass Road) traffic to eastbound only between Cornelius Pass and Old Cornelius Pass roads

Improve traffic flow at intersections

Construction is anticipated from February-May 2020.

For more information, visit the [project webpage](#), or contact Capital Project Services at 503-846-7800 or lutproj@co.washington.or.us.

Henry Hagg Lake Survey

[Tell Washington County](#) what is most important about the park through November 15.

TriMet Service Improvements for FY2021

[Provide feedback](#) on proposed improvements in bus service through November 30.



Helpful for:

- sleep
- pain
- anxiety
- pets and more

*Safe, effective, 3rd-party tested
Hemp-based CBD*

760 NW Dale (enter from parking lot)
Hours: M-Sat 9:30-7 • Sunday 10-6

Support the local businesses that support the News—they make it possible! Tell them you saw it in The Cedar Mill News!



Washington County, Oregon
WOOD STOVE EXCHANGE

Let's clear the air.

www.WoodStoveExchange.com 503-846-4425




BETHANY
FAMILY PET CLINIC

503.828.9178

BethanyFamilyPetClinic.com

15166 NW Central Drive Portland, OR 97229
OPEN 7 DAYS A WEEK

Stocks. Bonds. CDs. IRAs. Mutual funds.



Gary J Thomas, Financial Advisor
12923 Nw Cornell Rd Ste 105
Portland, OR 97229 503-644-5104

Edward Jones
MAKING SENSE OF INVESTING

Historic Union Cemetery
Plots available
Call 503-515-2255 for info
2005 NW 143rd

Dean H. Shade
Attorney at Law
503-644-5539
13765 NW Cornell
dshadelaw@gmail.com



Badger Tree Service
 Certified Arborist

Two generations of LOCAL Expert Tree Care

Tree • Hedge • Shrub Care
 Ornamental/Bonsai Pruning
 Lot & View Clearing
 Removals
 Stump Grinding
 Brush Chipping

Badger Tree Service Inc.
503-648-7445
 Licensed, bonded, insured
 CCB#82766

Proudly serving Cedar Mill & Beyond since 2008!



WORLD OF SMILES
 Pediatric Dentistry

VISITWORLDOFSMILES.COM



SUNSET
 SCIENCE PARK
 Federal Credit Union

OPEN YOUR EYES TO A CREDIT UNION®
 YOURMONEYFURTHER.COM



Business News, continued from page 2
 allergy. To sweeten the deal, with each flu shot you get a \$5 shopping coupon to spend at Pharmaca. Get ahead of the curve and stay well this winter! Our Naturopathic doctors and Nutritionists can also support with immune builders. Ask for our “Staff Picks”!

Did you know we have the best Holiday gifts? Seriously. Our Holiday goodies are starting to fill the store and we’re so excited to share them with you. We have warm winter wear, deluxe spa goods, jewelry, candles, gorgeous children’s toys, and lots of original gifts that will engage the imagination.

This month we’d like to introduce you to Rose, our Lead Practitioner and Nutritionist. Rose is originally from Auckland, New Zealand but has been in the PNW for over 10 years! Her favorite New Zealand products at Pharmaca are the Trilogy skincare line and the Manuka Honey. Come in and ask her why!

Cornell Farm Café Kitchen is Open!

After three amazing years of growth in the Cafe, our little farmhouse kitchen was in need of a few upgrades.

Our amazing crew of staff and contractors tore most of it up and got it all put back together in just seven days. A huge “thank you” to the speedy crew and all our patient patrons who put up with a week of grinding, banging, and clanging! Renovation is complete and we are open once again for full brunch service along with our coffee, espresso drinks, and homemade pastries.

Plus, keep your eye out for a new seasonal menu coming up in a couple weeks!

Cornell Farm Houseplant Swap

Sunday, November 10, 3-4 pm,
 Cornell Farm, 8212 SW Barnes Rd., free

What happens at a plant swap? People bring established plants of all sizes, some that they have recently rooted, or even just cuttings off of a bigger plant—if it’s one that



Here is Rose showing off our Winter Woolies with Susan, our most beloved mannequin. Fact: Rose never gets sick. She keeps her immune system strong with Plantiva’s Immune DX, Host Defense Mushrooms, Propolis spray, and the absolute essential, Vitamin D. Please come in and ask Rose for the full run down on immune support and chat about healthy living.

Anyone can take those plants at any time. If you have something that is maybe a little more rare, valuable, or you just want to make sure to get something in return, then you can



place those on a negotiation table so people know to have a more in-depth conversation with you about the trade.

Beyond trading plants, people share knowledge, make connections, and get a peek into other people’s collections. Sometimes collectors bring special varieties that aren’t commonly available in the retail market -- you never know what you’ll find!

Please feel welcome to attend this event even if you don’t have anything to trade -- we all have to start somewhere! Houseplant en-

thusiasts are generally quite generous and you’ll likely walk away with free offerings to get you started.

We’ll have a staff member available who can help with any questions you may have about your new plants!

[Register here.](#)

Eldercare 101: A Practical Guide to Later Life Planning, Care, and Wellbeing

Thursday, November 14, 6 pm,
 Fieldstone Cornell Landing, 9860 NW Cornell Rd.

Join Theresa Pritchett, co-author of “Eldercare 101: A Practical Guide to Later Life Planning, Care, and Wellbeing,” for an in-depth look at planning for yourself and your loved ones as they age. Theresa is a certified senior move manager and has extensive knowledge about the costs, quality, and availability of local community resources for elders.

Call 503-292-9222 by November 11 to reserve your place!

Village Gallery of Arts

We have Gift Cards!

For any amount \$5 and up! For anything we sell, including classes! No expiration date! If you simply can’t decide which work of art to give that special someone, give a Gift Card and let them choose! Each one comes in our signature red envelope with festive ribbon, perfect for the holidays. Drop by and pick up one or two, or one for everyone on your list! Should a purchase total less than the Gift Card amount, the remainder will be given as a credit towards future purchase(s) at the Gallery.

Cash & Carry Art Challenge Artist Reception

Sunday, November 10, 2-4 pm,
 12505 NW Cornell Rd., free.

Prizes awarded for Most Original Wreath and Most Original Panel, by Village Gallery Board of Directors. Come enjoy refreshments and see the winning artworks! The Art Challenge exhibit closes December 24.

For more details and information please check our website, call the Gallery, or drop by and pick up a flyer.

Classes and Workshops

(for more details on each listing, please see our website, villagegalleryarts.org or call 503-644-8001)

Sunset Credit Union

Holiday shopping season will be sneaking up on us quickly, and can easily be a chance to get further in debt, if you're not properly prepared. Many shoppers turn to big sale days like Black Friday or Cyber Monday to save, but you don't have to brave the masses or camp out at the computer to save. Here are some tips to save this upcoming holiday season:

Write a list and stick to your budget. Start out with a list of people you wish to purchase for and how much you plan on spending on each person. For easy tracking of purchases and budgeting sake, many financial experts recommend that you use one credit card to make your holiday purchases, so if an item does need to be returned, you'll easily have the paper trail to know where and when you purchased the gift.

Splurge on experiences rather than gifts. Memories you make together can be invaluable and don't have to come with a big price tag. Donate your time to a local nonprofit or spend time with your family enjoying our local northwest coastlines and mountains.

Give gifts of service. Remember when you used to give your mom a coupon for a free hug? Ask yourself what you can offer that your friends would enjoy: A home-cooked meal? An hour of handy-man skills? Perhaps you sew and can provide tailoring. Whether it's replacing lightbulbs or offering an evening of childcare, you might be surprised how much your simple act of service will surprise and delight.

The best way to make sure you have the money for the holidays each year is to open a special Club Account at Sunset Credit Union. To learn more, give them a call at 503-643-1335 or visit their website at spsfcu.com. Sunset Credit Union serves anyone who lives, works or attends school in Washington County. They are located at 1100 NW Murray Blvd. #200.

Cedar Mill Business Association

The Cedar Mill Business Association (CMBA) is proud to announce the launch of our new website: cedarmillbiz.com, and we invite you to check it out!

Proudly featuring an updated look, the star of the site is our SHOP LOCAL DIRECTORY, which

provides an easy way to identify the fantastic stores and service providers that we have in the area.

The CMBA has been in existence for more than 25 years, and has been committed to local community, raising funds and coordinating the Flower Basket Program along NW Cornell Rd, and currently donates about \$1700 a year to such worthy causes as SNAP (food stamp program), implemented through the Cedar Mill Farmers Market, the Beaverton School District Homeless Teen program, and funds to support the Sunset High Choir. It is our goal is to be able to add more organizations to this list, and increase this amount to \$5000 in 2020. A lofty goal, but with help from the local community, we think we can do it!

If you are a business owner, or a service provider doing business anywhere in the Cedar Mill and Sunset Corridor area, and would like to know more about membership, please visit our website for more information. Thanks for your local support!



CVS opens in the Pearl

The second anchor tenant in the Milltown Center that's being built now at Cornell and Saltzman is CVS Pharmacy. The company just opened their first full-service store in Oregon in the Pearl District.

"The new store includes a greater assortment of healthier foods, expanded customer-driven personalization, elevated beauty selections and more; all designed to enhance the customer experience and make it even easier for them to get and stay healthy," says Jessica Butler, Account Manager for their public-ity company.



Eldercare 101

Join Theresa Pritchett, co-author of "Eldercare 101: A Practical Guide to Later Life Planning, Care, and Wellbeing," for an in-depth look at planning for yourself and your loved ones as they age.

Thursday, November 14 | 6:00 PM

9860 NW Cornell Rd, Portland
RSVP by November 11: (503) 292-9222

Sign up to get The News in your inbox:
cedarmillnews.com/signup

Provence Kitchen Linens
At the Cedar Mill Farmers Market
Or order online:
etsy.com/shop/FabricOfProvence
Or call
503-679-1681
for a studio visit

Peninsula
INSURANCE
A DIVISION OF TIMMCO INSURANCE, INC.

Bob Rosson
12700 NW Cornell Road
503-644-5333

Safeco Insurance
Member of Liberty Mutual Group

COMPUTER HELP?
CALL THE EXPERTS!

ELECTRONICS UNLIMITED

serving Cedar Mill

- ▶ Spyware/Adware/Virus Removal
- ▶ Hardware & Software Troubleshooting
- ▶ Affordable Backup & Recovery Solutions
- ▶ Specializing in Server & Laptop Repair
- ▶ We Service Business & Home
- ▶ On-Site - Day, Evening and Weekends

503-848-9191

Locally Owned and Operated
Since 1995 • Best Service at Best Price!

www.eucomputers.net

Zo-Ann
at Jeanne Salon
Curly Hair Specialist!
Men, women & kids

503-310-5668

appointments available
Thursday-Saturday
days & evenings!

3673 SW Hall



MINDFUL TMS

A medication-free option for treatment resistant depression.

THE CENTER FOR HUMAN HOLISTICS

Keith G. Lowenstein, M.D., P.C. Physician

15160 NW Laidlaw Road, #240 | Portland, OR 97229

Phone: 503.601.7004 | Fax: 503.601.6876

www.humanholistics.com

Transcranial Magnetic Stimulation (TMS) is an FDA approved treatment for major depressive disorder.

Total Office Solutions

Get in touch with our workflow experts today for customized office solutions

503-641-2000



PACIFIC OFFICE AUTOMATION
Managed IT Services
— PROBLEM SOLVED —

14747 NW Greenbrier Pkwy
Beaverton, OR 97006
pacificoffice.com

You can't fight Mother Nature. But you can retire to a cozy place and tell her where to go.

Okay Mother Nature, here's the deal: No matter what you throw at us, it will always be comfy and cozy at The Ackerly.

And our residents don't have to clean up after you either.

Call now to schedule your complimentary lunch and private tour.

**Move in before the end of 2019 and
get \$2019 off your Residency Fee!**

It's More Than Retirement. It's Five-Star Fun.

11795 NW Cedar Falls Drive • Portland
(503) 462-1181 • theackerlyattimberland.com

A LEISURE CARE PREMIER COMMUNITY

THE ACKERLY

AT TIMBERLAND

