



FREE

Cedar Mill News

Volume 14, Issue 12

December 2016



Like us on Facebook for timely updates

Sign up to get The News online: cedarmillnews.com/signup

Japanese beetle eradication plan announced

by Mary Dickinson Edwards

Japanese beetles are tiny—slightly bigger than ladybugs—but the destruction they cause is huge. They are voracious and indiscriminating. They'll eat your roses, your tomatoes and your marijuana plants. They'll even eat hops and wine grapes. Their appetites are costly, both to homeowners and Oregon's \$33 million nursery and horticulture industries.

The Oregon Department of Agriculture has known about them and has had traps around Portland International Airport since 1991. They aren't good flyers, said Clinton Burfitt, manager of the state Insect Pest Prevention and Management Program. But they are good at hopping flights from the Mid-West and East Coast—their current population centers. Traps have yielded only a few at the airport until 2010. And that's where they've stayed.

But they hitched a ride to Cedar Mill in 2016. Last summer 372 were

trapped near NW Saltzman and Thompson Road areas. Traps were baited with the scent of roses, which the beetles find irresistible. Because the damage they cause is so great and so many were found so far from their usual location at the airport, the Oregon Department of Agriculture has plans to eradicate the beetles before they spread further.

Starting this spring, when the beetles lay their eggs, workers from the department will use seed spreaders to sprinkle Acelepryn G granules in the soil of infested areas. Adult beetles love our lush lawns and lay their eggs there in July. Grubs stay in the soil till June when they become adults. The pesticide, which the Environmental Protection Agency labels "reduced risk," is designed to kill the beetles at the grub or larva stage. It's not hazardous to mammals, but is to aquatic invertebrates, so where there are creeks, such as in the

Continued on page 9

Why we can't have nice transit

By Virginia Bruce

About a year ago, Mukundan Thirumalai started a Change.org petition asking for better transit from Bethany to the Sunset Transit Center. He and his wife Lata live near Stoller Middle School. Mukundan commutes to the downtown area, and Lata commutes to Gresham. If they want to use public transportation, they can either walk 20+ minutes to catch Line 67 to the Merlo MAX Station and then ride to Gresham, or drive to the Park and Ride at the Cedar Mill Bible Church, park, and catch a bus to the Sunset Transit Center (STC). In either case, her commute is about an hour and a half each way, and his is about an hour.



Mukundan Thirumalai created a petition asking for better transit for the Stoller neighborhood.

Given that there is no direct public transit service to the STC, nor an available parking facility that accommodates people arriving beyond 6:30 am, he currently drives his wife (who has an injured leg) to STC or to Gresham. He has to juggle that trip with delivering his kids to and from school, morning and afternoon.

Mukundan says, "We are requesting a public transportation service, hoping that things will change and produce better livability eventually to the residents of the Bethany area."

His petition reads, in part: "There is currently no bus service directly from the Bethany area (closer to the Stoller Middle School Area and its adjoining areas) to the Sunset

Continued on page 8

Westover Road restrictions to stay

By Mary D. Edwards

Washington County commuters who drive over Cornell Road into Portland got mixed messages this week regarding use of Westover Road. Message 1: The right turn onto Westover will stay closed to all but carpools during morning and evening commute times. Message 2: Those who ignore the signs and turn right might just be able to get away with it, because Portland police have higher priorities than ticketing those seeking to escape Cornell's rush hour backup.

That was the gist of a community meeting held Dec. 5 at Chapman Elementary School. The meeting was called at the end of a six-month trial for the road restrictions in the neighborhood streets off NW Cornell Road.

NW Westover was closed to all but carpools during weekday commute hours (7-9 am and 4-6 pm) in April after neighbors successfully lobbied the Portland Bureau of Transportation (PBOT) for some relief from a steady stream of cars winding through their neighborhood.

PBOT spokesman John Brady



The signs forbidding right turns will remain at Cornell and Westover

presented data showing traffic volumes dropped in the early part of the trial, from an initial 528 to 208 at three months and then 340 at

Continued on page 10

New plans for Touchmark Heights

Early in 2006, Touchmark, a Beaverton-based company that builds and operates resort-style retirement communities for people 55-plus, proposed a [53-acre senior community](#) to be developed on property bounded by Miller Road and Barnes. [Pre-liminary plans](#) were released in 2007, but then the recession hit, and we didn't hear from Touchmark again until [October 2012](#), when [some changes were proposed](#) to the initial master plan approved by the county. The original 53-acre Planned Development was [expanded to 76 acres](#) by the addition of 24 acres on the southwest corner in 2013.

Work began on the [first phase of the development](#) this spring. That segment is expected to be completed in late 2017 or early 2018.

In late November, a Neighborhood Review Meeting was held to announce their latest plans. Several new ideas for the next phase of the development were shared at the



Concept plan from the Touchmark Heights website

meeting. The "Vineyard Clubhouse" will be built above the residential area now being constructed. This will be accompanied by expansion of an existing vineyard on the expanded property. Residents will have the opportunity to participate in the winemaking process. A greenhouse and expanded

Continued on page 7

Cedar Mill Business Roundup

Do you have news or events or know of something that you would like to see covered in the Cedar Mill News? Please write to Virginia Bruce at info@cedarmillnews.com

Sunset Athletic Club debuts new website

The Sunset Athletic Club upgraded its website in early November. Still at sunsetac.com, the new site is modern, mobile-friendly, and filled with new photos of the club, staff, and members.

The SAC Clubhouse website was updated in October, and is now part of the main SAC website. For convenience, you may still access the Clubhouse info directly at sacclubhouse.com.

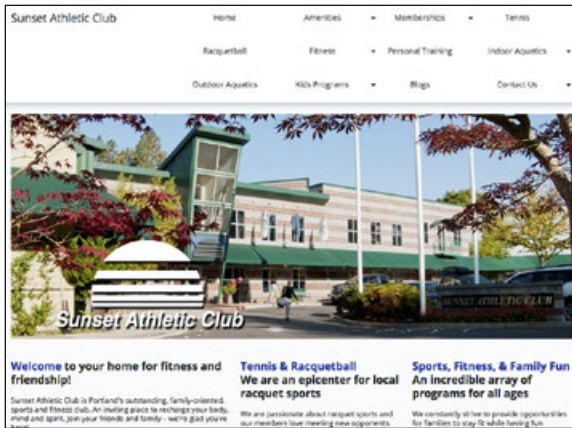
SAC is dedicated to keeping the site up to date and hopes it will provide extra conveniences and services for their members, as well as showcase the amazing variety of programs and features of the club.

The new website features online forms, where members may plan a Clubhouse Party, apply for a kid's pass, fill out climbing liability waivers, request to adjust their membership details, and more.

Wondering about a weather delay or power outage? Look for the Breaking News button, low on the main page, for updates 24/7. They will announce any main facility and/or Clubhouse closures, which may differ.

Lastly, SAC wishes to thank all the members and staff for their support, especially all of the photo-

modeling and details they contributed to the upgrade. The website was created by long-time local vendor Brook Design Services.



Yoga for moms-to-be

Wednesdays, 8 pm and Sundays at 7 pm, Santosha Yoga, 4876 NW Bethany Blvd., Suite L-4

Santosha Yoga would like the community of moms-to-be to know that they now offer prenatal yoga two times a week. Coming up in January there will also be some free community classes taught by their new group of teachers in training.

Guzman Ceramic Clay workshop for kids

Saturday, Dec. 10, 10-11:30 am, near Nike and Commonwealth Park Beaverton

The Ceramic Clay Workshop is coming up and it is hand-build, do your own creation style! All materials are included. Sign up now to save your place as there is a limit of six kids (6 years old and up). For more information, email Veronica Guzman, veroguzmandavalos@gmail.com

Veronica Lake releases children's book

Veronica Lake is an award-winning professional artist and teacher who has resided in the Cedar Mill area since 2000. She has been teaching classes to children every Wednesday and Thursday after school at Terra Linda Elementary. Veronica also teaches watercolor classes at Christ United Methodist Church behind Bale's Thriftway for adults and homeschool teens every Friday from 9 am to noon, during the school year. In addition, she holds week-long fine art camps and art workshops in the summer.

Veronica's artwork has been showcased for the last three years

at the CT Bistro in the Safeway shopping center on Cornell. Find her stunning watercolor paintings of marine life and her travels for sale at this Thai restaurant. Most recently, Veronica has been showcasing her Psalm series paintings at the Skyline Memorial Gardens beginning in September.

Veronica is adding 12 more vibrant and realistic watercolor paintings of young children at Skyline Gardens for a special show on December 9 from 6-8 pm. This is also a celebration of the launching of Veronica's new book, "Hush, A Story for You and Your Child". The talented Jim Brickman will also showcase his acoustic skills on the 12-string guitar on that night. There will be catered food and libations and Veronica will be signing copies of her book that will be available for purchase. Limited edition giclee prints and cradleboards of any of Veronica's 25 paintings can be ordered just in time for Christmas. Veronica says that this book is perfect for young and old and serves as a beautiful resource to enhance meaningful and truth-filled interactions between parents, and children, grandparents and grandchildren. The book was created to encourage and inspire.

Cedar Mill Liquor growler, crowler filling coming soon

Monday-Thursday 10 am-8 pm, Friday and Saturday 10 am-9 pm, and Sunday 11 am-6 pm, 13528 NW Cornell Rd.

Cedar Mill store manager and beer enthusiast Dustin Anderson is excited to announce that the store will be expanding its premium selection by filling both growlers and aluminum crowlers in the next month. "We are hoping to be up and running within the next 30 days," says Anderson.

Auslander coaching offer for News readers

To celebrate Judith Auslander's upcoming move to a new office, she is offering a \$50 discount to readers of the Cedar Mill News! Readers must purchase a session before the end of 2016. Email Auslander at Judith@WiseHeartCoaching.com

to find out if coaching or hypnosis might be just what you are looking for.

Village Gallery—New Year, New Look

The Gallery will be closed from Dec. 30 to Jan. 7, 2017, to refresh their exhibition space. They will add improved displays for arts and crafts, freshly painted walls and colorful signage. Join them Sunday, Jan. 8, 2017, 2-4 pm for their opening reception.

New classes: for complete details on all classes please visit villagegalleryarts.org

Jo Reimer - The Creative Process Thursday, Dec. 29, 10 am-4 pm

Artists of all levels, working in all 2D media, will benefit from this hands-on class filled with discussions and demonstrations as they explore composition. You will learn helpful ways to make the basics of design work for you as you compose and critique your own work.

Aquatic Center reopens

The Tualatin Hills Aquatic Center, the largest of the Tualatin Hills Park & Recreation District's eight swimming pools, has reopened following a four-month closure to replace the facility's roof and structural roof deck. The center is located at THPRD's Howard M. Terpenning Recreation Complex, 15707 SW Walker Road, Beaverton. It reopened to the public on Dec. 5.

The scheduled maintenance project, funded with capital replacement dollars, has also yielded a more energy-efficient facility. A digital system to control the building's HVAC (heating/ventilating/air conditioning) system was installed. Other improvements include ADA upgrades, painting and the installation of a new service entrance.

Group fitness classes, open swim sessions and organized club activities will resume immediately now that the pool is open. A [complete schedule is available on the website](#). Classes will resume in January; registration for those programs begins on Saturday, Dec. 10, at 8 am for district residents.

A grand reopening event will take place at the pool on Saturday, Dec. 17. Event details will be available soon at www.thprd.org.



The Cedar Mill News © 2016

Published monthly by
Cedar Mill News LLC
PO Box 91061
Portland, OR 97291

Online: cedarmill.org/news

Copy Editor: John Ramey

Business & Community News Editors:
Marlee Leonard & Mary Edwards
Website Production: Georgia Stanley
Publisher/Editor: Virginia Bruce

503-803-1813

info@cedarmillnews.com

Printed by Pacific Office Automation

Opinions expressed in this publication are not necessarily those of its advertisers.

Affordable housing project focus of December CPO 1 meeting

Tuesday, Dec. 13, 7-9 pm, Leedy Grange Hall

Prior to the CPO meeting, a neighborhood meeting on the proposed partition and eight-lot development at 1950 NW 102nd will be held at 6 pm.

Community Partners for Affordable Housing, Inc. (CPAH) is working to bring an affordable housing project to the now-vacant corner of Cornell and Murray. Meet the principles and find out about their plans. Learn more about the need for affordable housing and who their tenants will be, and bring your questions. Learn more in the [November issue of the Cedar Mill News](#).

A recently announced Metro Equitable Housing Grant for \$97,500 will allow Washington County Department of Land Use & Transportation (LUT) to update County regulations and streamline

development processes to eliminate barriers to new affordable housing. The grant will also fund predevelopment work on the CPAH project. The County will work closely with community members, including affordable housing residents, developers, designers, financiers and others.

Additionally, since there was no meeting in November (election night), we'll share updates about issues we've been looking at, including inter-county commuting, the Beaverton School District and its rapidly growing north-district schools. Do you have an issue you'd like to discuss with your neighbors?

We're also looking for a few good neighbors willing to get involved as members of the CPO 1 Steering Committee. Help us determine meeting topics and approve actions. Most business conducted online, via email and other document-sharing sites.

Neighborhood meetings for proposed developments

Before developers can submit certain land use development applications, they are required by Washington County to hold a "Neighborhood Review Meeting," inviting neighbors (currently within 500 feet) of the proposed action to a meeting where details of the development are presented. Attendees can share with the applicant any special information about the property involved, and express all concerns about the proposal. The applicant is required to take notes during the meeting and provide a record that is turned into the County as part of the application. Plans shared at these meetings are preliminary and subject to change, sometimes as a result of neighborhood comments.

Once the application is submitted to the County, notifications of public input/review time periods are sent to those neighbors and to any others who registered on the sign-in sheet at the neighborhood meeting.

CPO 1 is now posting Neighborhood Review Meeting notices at the Cedar Mill Library, in the Public Announcements section in the mezzanine. Some CPO members are requesting larger notification areas for some types of development but no action has been taken at this point.
Tues., Dec. 13, 6 pm, Leedy Grange Hall, 835 NW Saltzman (prior to the

CPO 1 meeting at 7 pm)

Proposed subdivision of the approximately two westerly acres of 1950 NW 102nd, platting eight new lots, retaining the existing house and keeping the eastern side as it is.
Tues., Dec. 20, 7 pm, Montessori School of Beaverton, 11065 NW Crystal Creek Ln.

Proposed remodel and expansion of the administration building.

Take a Clean Water survey

Clean Water Services would appreciate your feedback on a few important issues related to water resource management in your community. Your values and opinions will help inform future decisions and the [survey](#) only takes a few minutes.

PSU commuting survey

Portland area commuting habits is the focus of a [Portland State University study](#). All area residents, students or not, are invited to participate in the online survey that will be analyzed to better understand transportation and commuting behaviors in the Portland metro area. All responses will be confidential.

The survey needs to be completed by Dec. 16 and will take about 30 minutes to complete. Respondents will have the opportunity to enter a drawing to win one of 10 \$100 Visa gift cards.

COLDWELL BANKER
SEAL
Lauren Linha
REAL ESTATE AGENT
Cedar Mill's Local Expert!
503-705-8636 | LAURENSINHA@CBSEAL.COM
Start your home search at www.laurensinha.com today!
12985 NW Cornell Rd. Ste. 200 Portland, OR 97229

Sunset Athletic Club
Cedar Mill's Outstanding, Family-Oriented, Sports, Fitness and Racquet Club
Across From Sunset HS
503-645-3535
Locally Owned/Operated
www.SunsetAC.com
Personal Training Gets Results!

Come & See!
Join us for our 2017-18 Enrollment
Open House
Thursday, January 26th 5-7pm
Agia Sophia Academy
14485 SW Walker Rd
Beaverton, OR 97006
www.ASAPDX.org
503-641-4600
Montessori Primary Program (ages 3-6) & Multiage Elementary Program

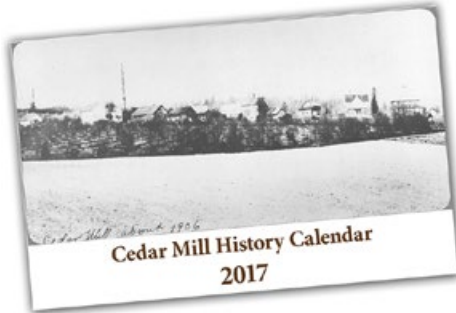
SISEÑOR
Family Mexican Restaurant
Open for lunch Monday-Friday 11 am-3 pm!
Our Banquet Room can accommodate up to 90 people!
11525 SW Choban Lane...just off Barnes Road!
Open daily: Sun-Thurs 11am-10pm • Fri-Sat 11am-11 pm
www.mysisenor.com • 503-672-9124

GET A GRIP
SAVE NOW ON THE BEST TIRE BRANDS!
nokian TYRES HANKOOK GOODYEAR COOPER TIRES
503-643-6767
301 NW Murray Blvd
Sunset TIRE FACTORY

Celebrate Locally! Shopping, Events, Connections...

A year of Cedar Mill history!

The Cedar Mill Historical Society is releasing their first Cedar Mill History Calendar, just in time for



holiday giving, and for sharing your love of our community with visitors to your home or business!

The calendars are only \$10 each, and are available to purchase [online at the Cedar Mill History website](#), or at the new office of the Cedar Mill News at the northwest corner of the Milltown Shopping Center, 12050 NW Cornell (two doors north of the laundromat). The News office is usually open from 11-5 weekdays.

Images are from Nancy Olson's collection of history photos that were initially collected for the Cedar Mill History book. She had copies mounted on cardboard, so she could visit area elementary schools to share our history with school children. Her son Nick kindly scanned them all so we could have digital copies. Images from the collection will be displayed in the CMN office soon!

THPRD hosts drive for needy

Tualatin Hills Park & Recreation District employees will once again work with the Beaverton School District and other community partners to create a brighter holiday season for those in need in the Beaverton area.

THPRD will collect toys, clothing and other items for selected families and homeless children within its boundaries. The park district will also collect food for the Oregon Food

Bank-Washington County Services and personal hygiene products for the Union Gospel Mission LifeChange Center for Women & Children, both located in Beaverton.

The public is invited to join employees and support both efforts at THPRD facilities throughout the Beaverton area. Donations of nonperishable food and personal hygiene products will be accepted until Dec. 21. Through Dec. 17, each THPRD facility will have a giving tree, wreath or garland with "snowflakes" with wish list items for needy families.

Decrease the grease

The holidays are almost here bringing extra guests, extra food, and extra cleanup. Avoid extra costs caused by gravy and grease-clogged drains. Call 503-681-3678 to get your free "Freeze the Grease, Save the Drain" kit including a pan scraper, lid and instructions to: Scrape grease and food scraps into a can, freeze it, and toss it into the trash.

For more information visit the [Clean Water Services website](#).

Kick up your heels at holiday dance for HomePlate

Saturday, Dec. 10, 7-10 pm, Leedy Grange Hall, 835 NW Saltzman Rd.

Impressions Dance Club and Leedy Grange Hall are hosting a dance to support HomePlate Youth Services. Bring gift cards for homeless youth and get free admission. There will be a short beginner's dance lesson from 7-7:30, followed by open dancing to DJ'd music until 10 or later if we still have people dancing! The dance at the grange is open to the public. Feel free to wear your holiday finery.

Amy Smetana, HomePlate's volunteer coordinator, is a dancer and she's happy to attend and talk to attendees about HomePlate's work in the community.

Put your pup on Santa's lap

Saturday, Dec. 17, 12-3 pm, Pet Barn, 12675 NW Cornell Rd.

Pet Barn will have a Santa in store for pet photos. They won't have a photographer, but customers



are welcome to take photos with their cell phones or other personal cameras. Pet Barn is hosting the event with a suggested donation of \$5 for photos with Santa. All donations go to All Terrier Rescue.

For more information on the donations visit allterrierrescue.org and for more information regarding Pet Barn call 503-641-9443 or visit petbarnpdx.com.

Santa Claus is coming to town!

Saturday, Dec. 10, 2-4 pm, Second Edition, next to the Cedar Mill Library, 12505 NW Cornell Rd.

Bring your children and grandchildren to Second Edition for a visit with Santa. Children will get a chance to sit on Santa's lap and receive a small gift, while supplies last. Bring a camera if you like to capture the moment. This event is free!

Refinish First opens its doors, takes donations

Thursday, Dec. 8, 3-7 pm, 10110 SW Nimbus Ave. Suite B-10

Refinish First LLC is having their first open house the first week of December. They will also be collecting for the second year for the KGW Toy Drive and for the first year-Oregon Food Bank. Donations are appreciated but not required. They are accepting donations through Dec. 17.

'Light and Hope' music of the season at PCC Rock Creek

Saturday, Dec. 10, 7 pm, PCC Rock Creek Campus, 17705 NW Springville Rd., Forum, Building 3, Room 114, Tickets \$10 for adults; \$5 for seniors and children under 16; free for PCC students and staff.

The Rock Creek Choirs, under the direction of Pollyanna Hancock-Moody and comprising PCC students and members of the community, invite you to an evening of inspirational songs. The program will include "Stille Nacht," Spanish carols such as "Riu Riu Chiu" and "A la Nanita Nana," Celtic arrangements of "I Saw Three Ships," and "The Holly and The Ivy," and much more. Please join us for an evening of lovely, calming and hopeful music.

This concert is intended to raise awareness about the PCC Rock Creek music program. PCC Rock Creek offers vocal classes as well as a community choir on Thursday evenings. All singers are welcome.

The proceeds from this concert will help fund the PCC Rock Creek choir program. Tickets (cash or check only) are available at the door. Donations for the choral program are appreciated and will be collected at the door. Parking is free.

For more information about the choir and the concert, please con-

NOTES OF CELEBRATION
Make your next event come alive!
503-645-2763

The music you love, beautifully played on piano
NotesOfCelebration.com

2nd edition resale
donate • shop • support

Happy Holidays and a BIG THANK YOU to our loyal donors and customers!

12505 nw cornell road
(at the east end of Cedar Mill Library)
All sales benefit Cedar Mill Library Assn.

Santosha 503 372-9825
Yoga for Every Body at our studio...

Holiday Mindful Market
Saturday, Dec. 10, 3-6 pm
Local vendors...Malas, incense, yoga apparel, books, jewelry and more

Yoga for All Levels
www.SantoshaForEveryBody.com
4876 NW Bethany Blvd
in Bethany Village Centre

tact Jason Palmer at jason.palmer@pcc.edu, 971-722-7869, or view the [music department's webpage](#).

Indulge your yogi at Mindful Marketplace

Saturday, Dec. 10, 3-6 pm, 4876 NW Bethany Blvd., Suite L-4

Santosha Yoga's teachers and yogis showcase their other interests around health and mindfulness, in their Mindful Marketplace. All of Santosha's proceeds (e.g. what vendors pay for a space) will go to Living Yoga, the local organization that provides free yoga to local prisons, rehabilitation centers, and Outside/In, among others. Among the offerings: Mala beads, massages paid for by the minute, yoga clothing from a local artist, aromatherapy products, hand sewn bolsters and eye pillows, art, pottery, and more. All are welcome, of course!

Sunshine Pantry holiday party for needy families

Saturday, Dec. 17, 10895 SW 5th St., Beaverton

Sunshine Pantry is collecting brand new toys and gift cards for families in need. Saturday will be for parents to come in and pick out gifts for children. Saturday helpers are needed to help parents gather gifts and give out gift wrap. The pantry will be needing volunteers on Friday, Dec. 16, after 2 pm to set up a holiday room with decorations and gifts. They need all kinds of donations of toys, gift cards for teenagers and anything that is new. The Larog brothers will also match any gifts brought to their store. Thank you for your kindness and love for all those in need.

Local artists entice with handmade gifts, cards

Sunday, Dec. 11, 2-4 pm, Village Gallery next to the Cedar Mill Library, 12505 NW Cornell Rd.

The theme for the December



Affordable Art, Crafts, and Cards

Original Work by local artisans

12505 NW Cornell Road
(Next to the Cedar Mill Library)

www.villagegalleryarts.org

Show is "Silver and Gold." The Gallery will be filled with glimmering and shimmering works of art and crafts by our members. Visit them for unique, hand-crafted affordable cards and gifts.

Be sure to stop by between 4 and 7 pm on Thursday, Dec. 15, to watch jewelry designer/artist Denise Hershey demonstrate bead and pearl-knotting techniques.

Village Gallery will offer extended hours on Thursdays and remain open from 4-7 pm during December until Christmas.

Big Horn Brass toots in the holidays

Sunday, Dec. 11, warm-up concert by the St. Matthew Exaltation Hand Bells at 6:10 pm; Big Horn Brass concert at 6:30 pm at St Matthew Lutheran Church, 10390 SW Canyon Rd. Free

It simply wouldn't be Christmas without the Northwest's premier brass ensemble. This snappy and sassy holiday show has been entertaining Vancouver and Portland audiences for decades. This will be the 26th annual concert at St Matthew Lutheran Church.

The concert features 15 brass and percussion instruments playing holiday favorites and crowd-pleasing surprises, including a musical trip on the Polar Express. This year's program features the work of several Northwest composers and arrangers, and includes new arrangements created especially for Big Horn Brass by Lars Campbell, Dave Robertson, and Phil Neuman. Laura Berman is the featured vocalist.

A large crowd is expected, so plan to arrive early for both parking and seating. This year's concert is sponsored by the Erik Weswig Memorial Fund, the St. Matthew Lutheran Church Foundation, St. Matthew Lutheran Church, and the Beaverton Arts Commission. It is a free concert with donations accepted to fund future concerts.

The concert will begin with a memorial candle lighting as part of the world wide Compassionate Friends candle lighting. For more information and music samples please visit bighornbrassholidayconcert.com.

Sign up to get The News online:
cedarmill.org/news

Holiday tree recycling

Many groups are offering recycling services for your holiday trees and other greenery. Most of them grind up the trees for mulch, but one organization is saving them to place in streams for fish habitat restoration!

Troop 207

Saturday, Dec. 31, Sunday Jan. 1, Monday Jan. 2, Saturday Jan. 7, 9 am-3 pm, Milltown Center parking lot (south of Cedar Mill Library)

Boy Scout Troop 207 will be recycling Christmas trees, wreaths. Troop 207 will also provide curbside pickup in neighborhoods near Saltzman Road between Cornell and Thompson Road. Recommended donations are \$15 per tree and \$7 per wreath or garland. Please call 503-489-4207 or visit treerecycle.org/troop207.org to schedule a pick-up.

Troop 207 meets at the Christ United Methodist Church in Cedar Mill. Tree recycling is an important fundraiser for our scouts and a valuable service to our community.

Troop 208

Saturday, Dec. 31, Sunday & Monday, Jan. 1 & 2, 9 am - 5 pm,



Stoller Middle School Parking Lot, 14141 NW Laidlaw Rd,

Boys attending Stoller, Five Oaks, Cedar Park, Springville, Sunset, Beaverton, Aloha, HS2, Jesuit, ISB, OES, Merlo Station, and Westview schools from Troop 208 will be recycling Christmas Trees in your neighborhood. They'll be distributing payment envelopes with instructions throughout the neighborhoods, but if you don't receive one of their envelopes, you can simply bring your tree to the site. Please remove all ornaments and tinsel. Sorry, no flocked trees or wreaths please.

This is our Troop's only fundraiser and the funds collected provide about 70% of our annual budget which goes primarily to activities to advance scout character development and knowledge. Suggested donation: \$10-15.

Questions? Contact our T208 Hotline at (503) 567-9322. Thank you for your generous support!

Troop 208 Scouts and Families wish you a Wonderful Holiday Season and a Happy New Year!

Troop 198

Sat January 7 & Sunday Jan 8, 9 am-3 pm, West Tualatin View School, 8800 SW Leahy Rd or Forest Heights Village, NW Miller Rd at Mill Ridge

They'll be distributing payment envelopes with instructions throughout the neighborhoods, but if you don't receive one of their envelopes, you can simply bring your tree to one of the sites.

Please make checks payable to Boy Scout Troop 198. Suggested donation \$10/garland, \$7/tree, \$5/wreath or swag. Sorry no flocked trees as they can't be recycled.

Serving West Tualatin View and Forest Heights since 1995. Questions or to e-mail a request TreeRecycle198@gmail.com

Troop 618

Saturday Jan. 31, Saturday Jan. 7, 9 am-3 pm; and Sunday Jan 8. 12:30-3 pm, St. Andrew Lutheran Church, 12405 SW Butner Road

Tree drop offs are welcome. Checks are payable to "BSA Troop 618". For special requests, please email T618treerecycle@gmail.com or call 503-567-9194. This is our sole Troop-level fundraiser.

Christmas for Coho

Saturdays, Jan. 7 & 14, 9 am-4 pm, Northwest Fly Fishing Outfitters & Royal Treatment Fly Fishing

This is Tualatin Valley Trout



Unlimited's popular tree collection and habitat restoration program. The Chapter will be collecting trees from the public at two of our premier NW fly fishing shops.

The trees are collected and then stockpiled for later placement as salmon fry habitat in our local waters. For more information, email TVTURestoration@gmail.com.


(These locations aren't nearby, but we thought we'd list them in case you want to help with this effort!)

Econe Chiropractic



Chiropractic for the whole family
Auto or workplace injury?
 We work with your insurance!
 Same-day appointments
 We can bill most insurances
 Dr. William Econe
(503) 203-6855
WE HAVE MOVED:
 8835 SW Canyon Lane #302
EconeChiropractic.com

CCB #92522



NOYES DEVELOPMENT CO.

18 New Luxury Homes from Award Winning Local Builder Coming in Fall of 2016 Off West Road

Carefully Crafted.
 Meticulously Finished.
 Designed & Constructed for Life.

noyesdevelopment.com

Pedestrian safety projects approved for 143rd and Thompson Road

The Cedar Mill area should get safer for walkers along two area roads during fiscal year 2017-18. The Urban Road Maintenance District Advisory Committee ([URMDAC](#)) approved funding for con-

struction of a sidewalk along NW 143rd Avenue from NW Melody Lane to house #2000, and a paved path for NW Thompson Road from Knollview to NW 114th.



A section of Thompson Rd. that will receive an improved walking path

struction of a sidewalk along NW 143rd Avenue from NW Melody Lane to house #2000, and a paved path for NW Thompson Road from Knollview to NW 114th.

The projects were two of eight that were approved by the committee—all sidewalks—and were selected from 23 candidates. They will be presented to the Washington County Board of Commissioners for approval in June. The choices were unanimous and followed a public comment period that proved quite popular by the time it ended Nov. 11.

“The proposed projects generated 278 public comments, a really impressive response from the citizens of Washington County,” said Bonnie Hadley, URMDAC chair. “The advisory committee would like to thank the public for this valuable feedback.”

The 143rd project will fill gaps in the existing sidewalk on the east

side of the road. About 475 feet of five-foot-wide sidewalk will be built at a cost of \$175,000. The commenters noted that the road links to Sunset High School, about one-half mile south on Cornell Road, and nearby Oak Hills. A similar, but not exact type of gap-filling will happen on NW Thompson Road, with about 1,000 feet of a 5-foot-wide paved path along the south side of the road. Several of the 30 people who commented on this project called for a sidewalk, saying a paved path in the road wasn't enough. Thompson links to Findley, Bonny Slope and Terra Nova schools and Bonny Slope Park. The cost is estimated to be about \$557,000.

To see the project areas and comments, click on an interactive map at: www.co.washington.or.us/LUT/News/public-comment-on-urmd-si-candidates.cfm

Both projects were part of Washington County's Minor Betterment program that funds small-scale improvements that are beyond routine maintenance but not large enough to be programmed as capital improvements. The pool of funds comes from county gas taxes.

To propose a small road improvement candidate, [submit an online form](#) or contact the Operations and Maintenance Division at 503-846-7623 or lutops@co.washington.or.us.

Fill a fire engine with toys for needy kids

As part of KGW's annual Great Toy Drive, TVF&R firefighters filled a fire engine and box truck with toys for needy area children last December. The need continues to be great, and firefighters hope to exceed that collection effort this year.

All toys donated by Dec. 14 will be donated to the toy drive. Any toys collected after that date will be taken to the Washington County Girl Scout Christmas Breakfast for the Homeless on Christmas morning to be distributed to Washington County children who attend the breakfast with their families.

Cedar Mill residents and businesses can drop off new, unwrapped toys at Station 68, 13545 NW Evergreen St.; Station 60, 8585 NW Johnson St.; or Station 61, 13730 SW Butner Road.

Washington County Forum

Mondays, 11:30-1, Peppermill Restaurant in Aloha at 17455 SW Farmington Rd.

The Washington County Public Affairs Forum meets over lunch every Monday, September through June, (except holidays). There is no charge for admission. Doors open at 11:30 am, and the speakers start at noon. Lunch is available to order from the menu.

Following the speaker, there will be an opportunity to ask questions. Asking questions of our speakers is a privilege of Forum membership.

Dec. 12: Morgan Holm, Oregon Public Broadcasting, will discuss the role of public broadcasting in today's media climate.

Dec. 19, 26 and Jan. 2: No Forum meetings; resuming on Jan. 9, 2017



Holistic Pet

- Grooming Available Sunday through Friday
- Self-Serve Dog Wash
- Premium Pet Food at Reasonable Prices

13567 NW Cornell Rd (near Safeway) • 503-626-PETS

Your Partner in Homecare
 Family resource for in-home personal care



Ask about our **New Client Special**
4 hours of care for the cost of 2
 Just to try us out with no further obligation.

Providing older adults the help they need to remain in their own homes as long as possible. Comprehensive nonmedical in-home care for as few as two hours per day.

Personal Care, Transportation and Houskeeping

Contact us for a no-cost consultation at:

HomecarePartner.org | 503-433-8079

United Homecare Services is a nonprofit public benefit agency serving Western Oregon since 2001

Oregon Health Authority Licenses
 15-2177, 15-2300 and 15-2083



UNITED HOMECARE SERVICES

Touchmark, continued from page 1 community garden area is proposed. Housing, which will still accommodate a little over 700 residents when the development is

announced preliminary designs so that neighbors and other interested residents can share ideas and concerns. Comments at the meeting ranged from traffic and parking concerns,



Maps of the proposed plans were presented at the meeting. We'll share the finalized plans when they are released.

access to the existing QFC-anchored shopping center, to excitement about the development's amenities, including public trails.

After considering

completed, has been reconfigured. There will still be a mix of single-family lots, a cluster of four-story "Garden Homes" now with sub-grade parking, and a multi-story Independent Living building with around 66 units.

These meetings are meant to an-

neighbors comments, [Touchmark](#) expects to submit plans to Washington County in early 2017. It will be a Type III application, requiring a public hearing. We'll continue to provide updates on this major change to the area that used to be called "Swede Hill."

Elementary Boundary Committee chooses plan

The construction of the new Kaiser Road K-5 school has required a boundary revision for the existing schools in the area: Springville and Jacob Wismer. An Elementary Boundary Committee of parents and others has been meeting to advise the Beaverton School District. The committee met for the final time on Thursday, December 1, 2016. They heard a review of the previous meeting and the three maps under consideration.

Following public testimony from the community, they deliberated on the three maps to develop their recommendation for Superintendent Grotting. They reached consensus (5-1) on the map titled Map Submittal #2, with an additional recommendation of grandfathering current fourth grade students at Springville K-8.

The Superintendent will review the Committee's recommendation and submit his recommendation to the School Board on January 9, 2017. We will follow up when the information becomes available. View the map in the Meeting Materials on the [Elementary Boundary Committee Meeting webpage](#).

THPRD to look at accessibility report

Wed., Dec. 7, 2:30-4, Beaverton Swim Center, 12850 SW Third Street (next to Beaverton High School)

The Tualatin Hills Park & Recre-

ation District will discuss the results of an ADA compliance survey of district parks at a meeting open to the public. Consultant MIG completed a detailed assessment of more than 200 park sites and facilities throughout THPRD's service area. The goal is to provide equal access to programs, services and activities in compliance with the federal Americans with Disabilities Act.

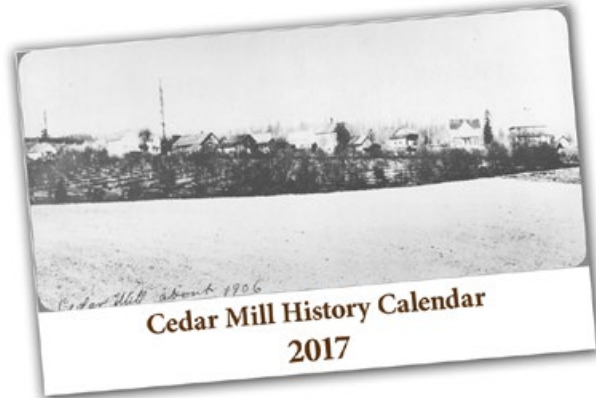
THPRD's ADA Transition Plan, based on the assessment, identifies barriers to access for persons with disabilities, and a timeline to remove those barriers. Some examples of improvements include accessible benches, pathway repaving, and adjustments to play area features.

Human Rights Council collecting harassment reports

The Human Rights Council of Washington County (HRC) has launched an email address to collect data concerning incidents of harassment or violence based on a person's race, gender or sexual orientation. Reports should be emailed to: Reports@hrcwc.org.

The HRC will publish no names: only dates, the nature of the incident, and the location. Law enforcement will share statistics with the HRC (no confidential data). The HRC condemns all such acts that serve to deny anyone's rights, and will continue to document these events until they stop. The data will be available for public view on the [Council website](#).

On Sale Now!



A year of Cedar Mill in historic photos!
Display your support for our community and its history! Great for gifts, offices, schools, and home.

\$10 each. Buy online at cedarmill.org/history or at the *new* Cedar Mill News office, 12050 NW Cornell, Suite 4 (NW corner of the Milltown Center at Cornell & Saltzman)
All proceeds go to the Cedar Mill Historical Society.



Discover gifts as unique as they are at Pharmaca!

Natural skin care & cosmetics
Fair Trade gifts & chocolates
Festive cards & gift wrap

BEAVERTON
240 NW LOST SPRINGS TERRACE | 503.596.3552

Transit, continued from page 1
Transit Center. The parking at the Sunset Transit Center is full by approximately 6:30 am. The public transport commuters are forced to either drive to the Elmonica Max or any of the park and rides that are nearly 25 minutes away from the Stoller neighborhood to take a train journey of 40-45 minutes into the Portland downtown area. This roundabout mechanism only goes to increase the car traffic density around the Bethany to Beaverton area, as well as severely reduces commuters' available productive time. Travelers to the downtown area are now forced to rely more on car traffic as a way to avoid the time spent on waiting for buses that would take them to the Merlo station, and onward to downtown by a hop on the train."

In October, he sent a letter, along with the petition, to TriMet officials and our Washington County Commissioner, Greg Malinowski. Tom Mills, Senior Planner at TriMet, has been the representative to numerous meetings, held in various settings, discussing the problems of providing transit to those of us in northeastern Washington County. Here's how he responded to Thirumulai's petition:

"Thank you very much for submitting your petition to TriMet requesting new transit service between

the North Bethany/Stoller Middle School area (N. Bethany), Cedar Mill, and the Sunset Transit Center. As we all know, commuting to downtown Portland from your area is difficult because the parking garage at STC fills up quite early in the morning, and traffic is significantly congested along Highway 26, NW Cornell Rd., and W. Burnside St.

"As a newly developing area with a limited population, TriMet hasn't attempted to serve N. Bethany, however TriMet has attempted to serve Cedar Mill a couple of different ways over the last 15 years. These methods have included a door-to-door shuttle (i.e., the Cedar Mill Shuttle) and traditional peak hour fixed route transit service (i.e., Line 50-Cedar Mill). To date, both methods have failed to attract sig-

nificant ridership. This is primarily because Cedar Mill, and to a large extent N. Bethany, lacks a number of the elements that help to make transit successful.

"Elements that help to make transit successful include the density of people living within one-quarter mile of the transit line; the mix of land uses; and a walkable environment to allow people to access transit. While N. Bethany has some high-density

"One solution to the challenge of transit in your area is for residents to drive to a shared-use park and ride and take a short bus trip to Sunset Transit Center. Shared-use park and rides are private parking lots that are available to TriMet riders because they are lightly used during the weekday. Though driving to a shared-use park and ride and boarding a bus to Sunset is less convenient than parking at Sunset, it is likely less aggravating than

"Thank you again for submitting your comments about additional transit service to the N. Bethany and Cedar Mill communities. We appreciate your interest in riding TriMet and hope we can develop a solution that inspires people to use transit in the area. Please feel free to contact me directly to discuss this matter further."

All of this is true, of course, although there isn't much open land left on Saltzman any more. When

I first began observing the lack of transit out here, I realized it was a bureaucrat's dream: people who need transit don't move out this way, and so they don't demand it! But it's not that simple. There are many places to lay the blame.

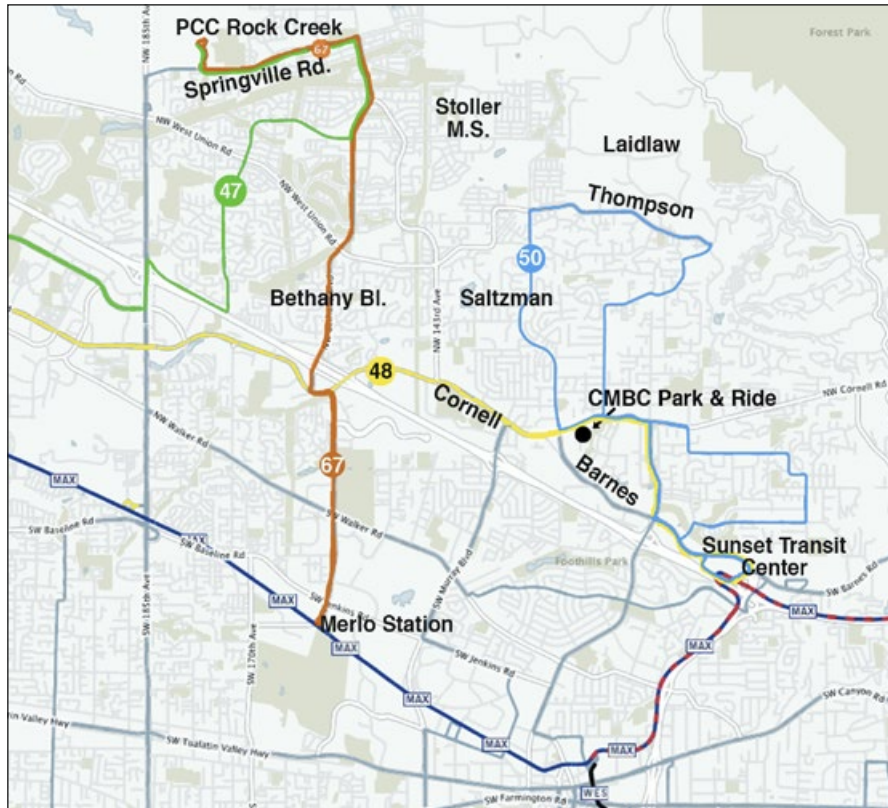
In the 50s and 60s, when Washington County began to grow, subdivisions were designed with few externally connecting streets. Everybody drove everywhere. Some of the long-established roads became collectors and arterials without pedestrian facilities (the lack of sidewalks and the ditches that Mills refers to).

Retrofitting older areas with walkways is very expensive. It's not just the concrete and drainage—you also need adequate right-of-way, which in many cases was not obtained by the county as the area developed. Purchasing ROW can be the biggest expense in a walkway project.

The Board of County Commissioners decided this fall to not require dedication of ROW for many new and redeveloping properties.

Density has been a hard sell in the county. Developers prefer to build single-family homes, albeit on smaller and smaller lots, because they know how to sell them, albeit for prices unaffordable to a growing population.

Laying blame, however, doesn't get us to a livable county. We need to keep on asking these questions of all our elected officials and the management of our service agencies. And we need to keep encouraging them to search for new solutions. Surely this isn't the only area in the country with such challenges. What good solutions are being used elsewhere?



The four bus lines that serve the Cedar Mill, Bethany, and Rock Creek area (47, 48, 50, and 67) miss out on the Stoller neighborhood. The only Park and Ride is quite near the Sunset Transit Center.

developments, there are still large tracts of undeveloped land along NW Laidlaw and NW Saltzman Rd. Additionally, Cedar Mill lacks the level of density that can support transit. Also, both N. Bethany and Cedar Mill are predominately residential in their land use, which typically doesn't support midday or weekend transit service. Finally, both areas lack street connectivity and pedestrian infrastructure (e.g., there are ditches along significant portions of NW 143rd Ave. and NW Saltzman Rd.). As a result, it is very difficult and sometimes dangerous to walk to a bus stop. These issues have made it very difficult for TriMet to attract ridership in the area. And as you can imagine, TriMet doesn't want to invest in services that don't attract ridership.

driving into Portland. Currently, TriMet has a shared use park and ride lot at the Cedar Mill Bible Church at 12208 at NW Cornell Rd. This lot is served by Line 48-Cornell, which provides 15-18 min. service during the weekday morning and afternoon rush hours and is only a five minute ride to Sunset Transit Center.

"This lot is ideally located for a shared use park and ride in your area, however it is barely used. I propose that TriMet commits to promoting the shared use park and ride at the Cedar Mill Bible Church to your community. If this proves successful, then we will pursue additional shared use park and ride opportunities where people in your community can connect with transit service going to Sunset Transit Center.

Beetles, continued from page 1
Willow Creek area, biological controls are planned, he said.

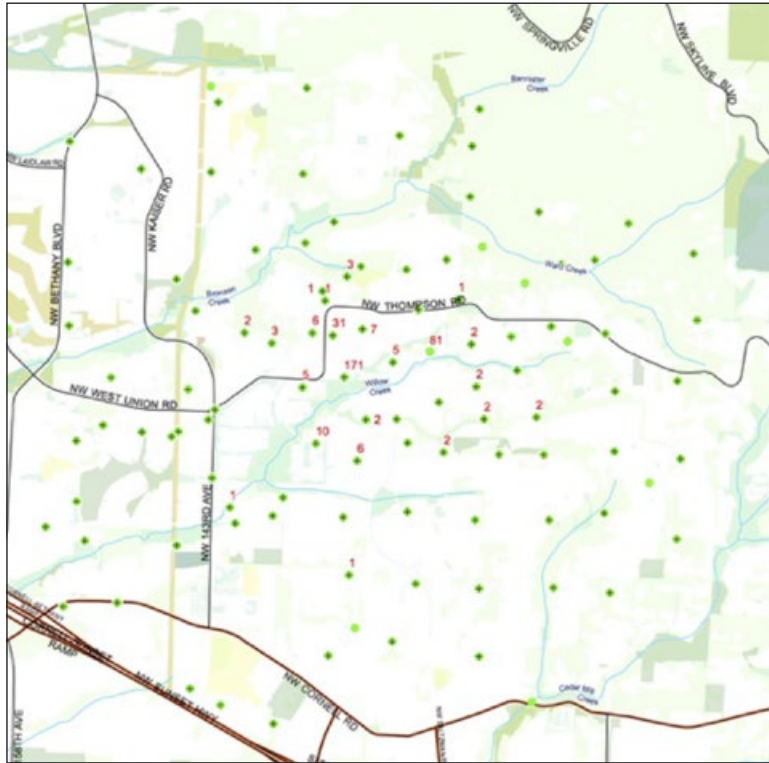
“It’s better to kill them in the larva stage than when they’re adults,” Burfitt said, noting killing adults with pesticides also kills beneficial pollinators. In that vein, he also strongly cautioned against homeowners applying pesticides on their own or as a preventative measure. Homeowners outside the area won’t have to be treated. Residents who find beetles are encouraged to report them to his office.

The timeline for treatment is:
Jan.: Notification cards to affected residents (about 2,500 homes)

Feb: Dept. of Agriculture open house to explain plan

Mid-Apr. to mid-May: Spread Acelepryn G granules

Burfitt said the 900-acre treatment area will be regularly monitored for up to five years. In a presentation to members of area homeowners’ associa-



Japanese beetle detections in NW Portland 2016. 402 Japanese beetles were caught between 1988-2015; 2016 catches (343) are 92% of the total for the past 27 years combined!



The Japanese beetle life cycle

tions in November, he asked residents to help get the word out about the need to eradicate the pests and his department’s plan to do that. With their help, he was hopeful that the effort would work. In Cave Junction, beetles were found and dispensed with in 1989, 2011 and 2012. None have been found there since.

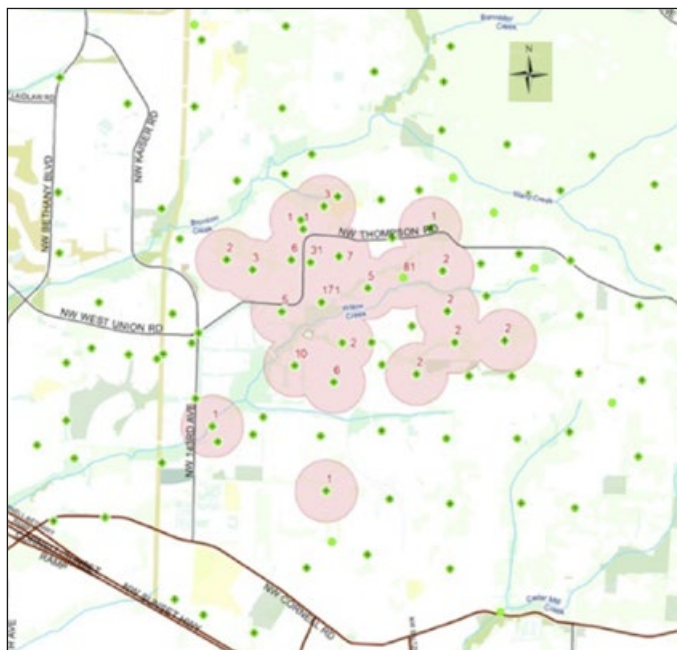
The Cedar Mill News will continue working with Burfitt to keep residents apprised. More information can be found at japanesebeetlepdx.info

Writers’ Mill releases fifth anthology, children’s book

The Cedar Mill “Writers’ Mill” group has announced their fifth anthology of stories written by local writers. “The Writers’ Mill Journal Volume 5” is available online (search for the Writers’ Mill Journal), in print, or Kindle format. Proceeds go to support the Cedar Mill Library.

The Writers’ Mill is a group of local writers of all ages who meet from 1-3 pm on the third Sunday of each month at the Library. In addition to Vol. 5, the group adds its first collection for children titled “Zeus and Bo and Fred and Joe and Co.” Zeus and Bo, dogs who used to live in the Cedar Mill area, were the inspiration for Fred and Joe, the stars of Sheila Deeth’s “Tails of Mystery.”

Entries for all their anthologies are contributed, collected, combined, formatted, illustrated, and edited by local writers and artists. Newcomers are welcome at any time.



2017 Potential treatment area in NW Portland: ~2,500 single family properties, 900 acres

HAPPY HOLIDAYS
from
Michelle Gilpin, DPT
Julie Burtis, DPT
Mark DiMizio, PTA

New Heights
PHYSICAL THERAPY +
13306 NW CORNELL RD.
971.245.6217
NEWHEIGHTSTHERAPY.COM

Caregiver /CNA/Bath Aide
with over 16 years of experience
available to care for you
or your loved one
Stacey Connerton
503-686-4557
spconnerton@yahoo.com
Licensed and bonded
Excellent References and A Loving Heart

Dean H. Shade
Attorney at Law
503-644-5539
13765 NW Cornell
dshadelaw@earthlink.net

Nails, Waxing & Skin Care
Get ready for the holidays with a Shellac Manicure!
Dec. special: *Lindsey Pruett* at \$22
Ahead of Style Salon & Spa
21195 NW West Union Road
Call or text 503-708-5557

Wise Heart
Life Coach & Hypnotherapist

Change is hard!
Let's make it easier!

Judith Auslander, MA²
503-318-9343
www.WiseHeartCoaching.com

Westover, continued from page 1 the six-month mark. Brady said the decline and then increase was likely due to drivers fearing enforcement—which did happen at first—and then taking a risk by ignoring the signs and driving through. In response to questioners, he said there was no data on carpool numbers, nor on changes in drive times for commuters.

While some in the audience disputed the data, which for some streets and times showed more traffic rather than less, the goal of restricting drivers is intended to have the effect of making Cornell less appealing as a commuter route. “If people thought Cornell was a good way to go into the city, traffic might increase in the long run,” said Brady.

Michael Schoenholtz, president of West Hills Transportation Partners, who circulated an online petition to end the restriction, has pointed out that, “Portland has no incentive to solve the commuter woes of Washington County residents. They point to Metro as the solution—even though Metro says Portland needs to take the lead. “All authority on this topic area is held by the local municipal governments and not Metro,” said Metro Councilor Kathryn Harrington.

PBOT’s data did not include the number of scofflaws ticketed for flouting the signs. But one Westover neighbor said he believed only one Portland policeman, monitoring for a total of three hours, wrote three tickets in the first week.

Enforcement to be minimal

Portland police have more pressing (i.e. safety) issues to deal with than the livability concerns of the residents of Westover, Brady said.

PBOT also prioritizes safety over livability. That’s why a traffic signal at Cornell and NW 25th isn’t on the table thus far. The intersection is one of the safest in

the city, he said, because cars must slow for the stop signs.

Members of the audience, who numbered about 60, were made up of commuters and Westover neighbors. Several on both sides agreed that the closure was “a band-aid” to the larger problem of too many drivers on too few roads at one time. Notably, PBOT calls Cornell a collector road and as such its 5,000 to 10,000 cars per day aren’t considered unusual. What’s at issue is the number of cars cutting through the neighborhood side streets.

State Rep. Mitch Greenlick represents both NW Portland and NE Washington County. He attended as a private citizen and noted the PBOT decision highlighted “competing interests” and was too narrowly focused on a few streets.

What’s needed, said Carol Cheshire, of the Forest Park Neighborhood Association who attended the meeting, is a Transportation Demand Management (TDM) study on long-term solutions.

A TDM was also one of the goals of [the Change.org petition](#) to end the restriction by the West Hills Transportation Partners. Their petition was signed by more than 1,200 people. TDM programs are implemented as alternatives to widening or building roads. In its petition, the group says a TDM can include subsidized transit, van or car pools, shuttle buses, telecommuting, or flexible work hours.

Funding and leadership for such a study—and any broader solutions—would have to come from Metro, both Cheshire and Brady said. Until then, “the long lines that exist will continue to exist,” Brady said. But Portland would have to request the study and be willing to actively participate, and they haven’t shown a willingness to do so. However, some point out that the Portland region’s traffic woes may discourage new businesses from locating here, so it should be a

Portland concern.

The online petition, which was presented as a letter to the Portland City Council, Multnomah and Washington County Boards of Commissioners, Metro Council, and PBOT, seeks the following three actions:

- An end to the closure of Westover to non-carpoolers because of “the hardship from the unexpectedly large increase in commute times.” The group said it would support Westover traffic calming measures once relief measures are in place.
- A stoplight at NW 25th and Lovejoy among other short-term solutions. (Brady said the cost of a signal was estimated at \$300,000.)
- The opportunity for the group to work with Portland, Multnomah County, and other agencies, to “explore potential longer term solutions to the larger problem,” including a Transportation Demand Management program (TDM).

Cedar Mill residents weighed in about Cornell and other commuting routes at CPO 1’s September meeting, billed as an Inter-County Commuting Forum. In the [brainstorming session](#), residents called for the stoplight at NW 25th and Lovejoy, a shuttle service along Cornell, and bike lanes.

Cornell’s history

Portland’s problem with Cornell goes back more than 25 years when the city got its first complaint about it. But anyone who drives—virtually any time of the day—runs into crowded roads, be they collectors like Cornell or highways. The roads were not built for the level of use they’re getting. The Westover restriction is just one example of this.

The same wasn’t true when land that was to become [Cornell Road was surveyed in 1868](#). Surveyors judged it “to make a good road and will be of public utility, will shorten the distance to Portland and will

damage no one.” The new route was to connect with the established Balch Creek Road at the Multnomah County line near William and Emily Cornell’s donation land claim.

Aside from horses and walkers, the major users of the early road were wagons bringing produce to Portland from west side farms, and stage coaches, principally the [West Side Stage Line](#) that ran along Cornell through Cedar Mill, with stops in Bethany, West Union, Helvetia and eventually Hillsboro.

The Cornell-Westover route isn’t something new either. From a [Cedar Mill News article about the West Hills Dairy](#) in the 1920s and ‘30s: “The raw milk and cream was loaded onto a truck that Ernest drove into West Portland along a standard delivery route,” Thorne recalls, “They went up Cornell and delivered milk to the rich folks in the big houses at the top of the hill, and then continued onto Lovejoy and up Westover.”

113th sidewalk update

Washington County’s plan to link up sidewalks on NW 113th Avenue by year’s end has been delayed with expected completion now estimated to be early summer 2017. The county decided to bundle the project with other sidewalk completion projects as a cost-saving measure. Currently, contractor Lyda Excavating, Inc., is working on sidewalks along NW 90th Avenue from Oak to Leahy with expected completion estimated to be early 2017.

The project to link up islands of sidewalks on NW 113th from NW Rainmont to Cornell Road will be started after the 90th Avenue job is done, said Matt Meier of Washington County. Much of the work is dependent on the weather, he said. Along with the continuous sidewalks, the county plans to install a speed display sign to remind drivers of the 35-mph speed limit on the steep hill.

MIKE'S AUTO PARTS
 12505 NW CORNELL
 503-646-0623
 Now featuring
INTERSTATE BATTERIES
 Outrageously Dependable™
 For your winter power needs:
 Snowmobile, RV,
 Automotive, and more.

Hours:
 M-F 8-7
 Sat 8-6
 Sun 9-5

Peninsula
 INSURANCE
 A DIVISION OF TIMMCO INSURANCE, INC.
 Bob Rosson
 12700 NW Cornell Road
 503-644-5333
 Safeco Insurance™
 Member of Liberty Mutual Group

SCHOCH DAIRY
 AND CREAMERY
 From the farm to your fridge.
 In hours, not days.
 Fresh milk daily, 7 am - 9 pm
 24335 NW West Union Rd • 503-647-2638
schochdairy.com

A brand-new kindergarten prep preschool on 3 acres in Cedar Mill!!

The Cornell School
 8808 NW Irving St.
www.thecornellschool.com
thecornellschool@gmail.com

Federal grant will enhance TriMet trip planning

by Angela Murphy, Public Information Officer, TriMet Public Affairs

The U.S. Department of Transportation (DOT) recently awarded TriMet a \$678,000 Mobility on Demand (MOD) Sandbox grant based on a proposal we submitted to extend our existing [Open Trip Planner](#) tool.

The Open Trip Planner (OTP), initially released as an open source project by TriMet in 2009, was the first to introduce multiple travel modes in one trip, with the original focus on incorporating biking and walking networks with transit. This grant will allow us to build upon the core of Open Trip Planner to incorporate shared-use mobility options.

The open data software and user interfaces, responsive on both web and mobile, will help our riders make informed decisions about their mobility choices, including the critical first and last miles of transit trips where a bus or train alone doesn't provide full access.

TriMet's project includes the development and expansion of two core data frameworks, including:

- Extending the OTP code base to support integration with shared-use mobility modes (bike-share and car-share services) as well as real-time transit information; and
- Implementing a fully functional and comprehensive open geocoder (also known as address locating).

In addition to the two main elements of the project, TriMet is looking to develop a new web-based interface that will allow users to make intermodal trip plans including shared-use mobility and demand-responsive service (Uber/Lyft/etc.).

Improvements to base map data will be made so the trip planner can support enhanced pedestrian/wheelchair accessibility information for customers; and improvements to regional address data that will make location search and geocoding more effective and user-friendly.

The project will also plan for compatibility with future booking and payment options so customers can plan and pay for their trips in one app.

"We're on the cusp of a transportation technology revolution," said Rep. Earl Blumenauer. "This grant

gives TriMet the opportunity to lead the nation in utilizing mobile technology and coordinating with private sector transportation providers to meet the mobility needs of a diverse and growing region."

The MOD Sandbox Program, managed by the Federal Transit Agency (FTA), is part of a larger research effort at the U.S. Department of Transportation (DOT) that supports transit agencies and communities as they integrate new mobility tools, making transportation systems more efficient and accessible, particularly for people who lack access to a car.

A total of \$8 million in MOD Sandbox Program grant funds was awarded to 11 agencies nationwide. The FTA chose projects that have demonstrated solutions in real-world settings. The announcement was made by U.S. Transportation Secretary Anthony Foxx at the 2016 White House Frontier Conference in October.

This two-year project will begin in January 2017. One of the key benefits we hope to achieve from this project includes enhancements to the core OTP routing engine. This will allow for more detailed pedestrian and wheelchair access routing, and text directions to

and from transit stops, by incorporating updates to the OpenStreet-Map (OSM) pedestrian network. The concentrated effort in improving both the accessibility data in the street network and its use in OTP will be a sharp enhancement to equity for persons with disabilities.

Our aim is to create a product that will not only benefit our riders and our region, but communities nationwide. Adoption of OTP technology has been strong, with implementation in dozens of cities and countries worldwide. TriMet is collaborating with the OSM coding community to establish best practices for representing this accessibility information in the base network, to serve as a model for diverse communities. TriMet will build out this accessibility information in the OSM network and provide a model for replicating this work in other regions.





Finally. There's a Simple Way to Switch Your Checking Account.

It's Your Money, Switching Should Be Easy.



SUNSET
SCIENCE PARK
FEDERAL CREDIT UNION

Tired of your current financial institution? We make switching to us FAST & EASY! Stop by our office or visit sspfcu.com to learn more.

**1100 NW Murray Blvd., #200
Portland, OR 97229
(503) 643-1335 sspfcu.com**




Healthcare for the Whole Family

- Pediatric and adult care
- Same-day appointments. Schedule online at our website or call us!
- Ask us questions & view your medical information using our secure online portal.



Cornell Family Medicine
Robert Barlow, MD
12400 NW Cornell, Ste 200
503-352-0211 • cornellfamilymedicine.com



BETHANY

FAMILY PET CLINIC

503.614.9061

BethanyFamilyPetClinic.com

15166 NW Central Drive Portland, OR 97229

OPEN 7 DAYS A WEEK





Restore, Refinish, Paint and Reface

•• 2015 •• **previous awards 2013-14**

Angie's list

SUPER SERVICE AWARD



Visit our Showroom!
Monday-Friday 9-1
and by appointment

Call for a free estimate
503-522-6188
www.refinishfirst.com



Lic #: 208312

SELL YOUR CAR

ANY CONDITION
Running, wrecked, or junk
FREE TOWING!

503-810-3061
FredsAutoRemoval.com

COMPUTER HELP?

CALL THE EXPERTS!



Electronics UNLIMITED

servicing Cedar Mill

► Spyware/Adware/Virus Removal
► Hardware & Software Troubleshooting
► Affordable Backup & Recovery Solutions
► Specializing in Server & Laptop Repair
► We Service Business & Home
► On-Site - Day, Evening and Weekends

503-848-9191 Serving Washington County & Downtown Portland

Locally Owned and Operated Since 1995 • Best Service at Best Price!

www.eucomputers.net



PACIFIC OFFICE
AUTOMATION
— PROBLEM SOLVED —

FOR OVER 35 YEARS

**LOCALLY OWNED,
NATIONALLY RECOGNIZED**

OUR PEOPLE MAKE TECHNOLOGY WORK.

Document management, IT services, printers & multifunction products, and more for your digital success

Pacific Office Automation
14747 NW Greenbrier Parkway
Beaverton, OR 97006

(888) 896-9029
pacificoffice.com

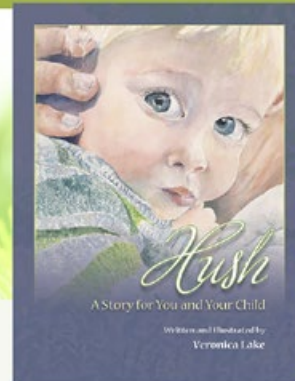
SHARP

LEXMARK **Canon**

RICOH



Debut of "Hush"
A Story for You and Your Child



Meet the author and artist *Veronica Lake* and listen to acoustic tunes by *Jim Dorman*.

Friday, December 9, 2016, 6-8:00pm
Skyline Memorial Gardens & Funeral Home
4101 NW Skyline Blvd.
Children 7 and older are welcome.

Complimentary Hors D'ouerves, beer & wine, soft drinks

For more information or to RSVP, please contact Rachel Fox at
rachel.fox@dignitymemorial.com and/or 503-292-6611

DignitySM

LIFE WELL CELEBRATEDSM

SKYLINE MEMORIAL GARDENS AND FUNERAL HOME
WWW.SKYLINEMEMORIALGARDENS.COM

NOW OPEN!
CALL TO SCHEDULE A VISIT TODAY.

You might meet new friends at The Ackerly. Or sidekicks.



When does a friend become a true sidekick? We're not really sure. But what we do know is that a lot of friendships and sidekick-ships will be made at The Ackerly at Timberland Retirement Community. With so many fun activities and events, it's perfect for folks who prefer more community and less retirement.

Visit today and see for yourself. The Ackerly at Timberland is now open across from Timberland Town Center. Call today to schedule a personal visit. Then get ready to meet some future pals, buddies, and BFFs.

THE ACKERLY AT TIMBERLAND

It's More Than Retirement. It's Five-Star Fun.

11795 NW Cedar Falls Drive • Portland • (971) 217-9146
Independent Living • Assisted Living • Memory Care
www.leisurecare.com

