



FREE

# Cedar Mill News

Volume 23, Issue 3

Sign up to get The News in your inbox:  
[cedarmillnews.com/sign-up](http://cedarmillnews.com/sign-up)



March 2025

## County history museum and collections face uncertain future

In late December last year, people interested in local history received a disturbing email informing us that the county's history museum was closing. The Washington County Historical Society (WCHS) had been [incorporated as a non-profit in 1956](#). Its collection of photographs, documents, and artifacts, primarily donated by "pioneers"—immigrants from eastern and midwestern US and European countries,—moved through a variety of locations but finally were collected at a building on the Rock Creek campus of Portland Community College (PCC). It was built in 1982 using funds collected from individuals, businesses, and foundations from around the

\$1 per year. An annex to the building was begun to house items in the collection that were not currently on display. Fundraising for the new space stalled, and some of the collection was briefly moved to an exhibit space in downtown Hillsboro. In the 2010s, funds were raised and loans were taken out to finish the annex and the PCC building was once again the site of WCHS operations. Exhibitions on topics from agricultural and industrial history to the Atfalati native people attracted visitors, while the research library was useful to families and historians.

In 2020, the museum was rebranded as 5 Oaks Museum. The co-directors began moving in a new direction, away from a focus on history and toward what they described as their five values: Body, Land, Truth, Justice, and Community. COVID meant that everything they did at first was [online](#). One exhibit called "[Gender Euphoria: Contemporary Art Beyond the Binary](#)" served to alienate many who expected a focus on more traditional historical subjects.

Operating funds for the museum had been coming from a variety of sources: foundation grants, personal donations, and an annual donation from Washington County, which owns the collections. Several donors and foundations did not renew their funding last year, and 5 Oaks had a six-figure loan liability.

*Continued on page 8*



The original Washington County jail building sits outside the museum on the PCC Rock Creek campus.

county, along with funds from the county, which had a 50-year ground lease with PCC.

In 1987 a lease agreement was signed granting occupancy of the building and custody of the collections to WCHS for as long as it operates as a museum, with rent of

## Japanese beetle update

The Japanese beetle (*Popillia japonica*) is a harmful invasive insect that poses a serious threat to Oregon and other western states. The largest infestation in Oregon was [found in 2016](#) in the Cedar Mill, Bonny Slope, Oak Hills, and Bethany areas of Washington County.

This invasive insect can be destructive in multiple life stages. If it spreads widely in the state, it could destroy over 300 types of

plants, leading to more pesticide use to protect crops and gardens. If we aren't able to eradicate of the current population, the beetles will keep spreading, causing widespread destruction throughout Oregon and the western United States.

To prevent this, the Oregon Department of Agriculture (ODA) is working on a multi-year project



to eradicate the Japanese beetles before they become established in Oregon. With help from local communities and municipalities, this project aims to protect Oregon's agriculture and natural environment.

## New businesses

### Manam Vegetarian Indian Cuisine

Tuesday-Sunday, 11-2:30 pm and 5-9:30 pm, 13514 NW Cornell

A new vegan/vegetarian Indian food restaurant just opened in the Cedar Mill Place center near the liquor store. Step into the fragrant dining room and you'll be tempted to try everything! Manikamdan Umopathy has been in the restaurant business for 20 years, and



brings his expertise to our neighborhood, offering lunch and dinner service six days a week (closed Mondays).

The [extensive menu](#) ranges from appetizers to curries and desserts, and includes dosas, the crispy crepe-like pancakes with a variety of fillings. There are also some Indochinese dishes, Biryani and other rice-based dishes, and a range of beverages. They serve [Kumbakonam Degree](#) coffee, an Indian favorite, and also sell it in bulk

Their [website](#) is still under con-

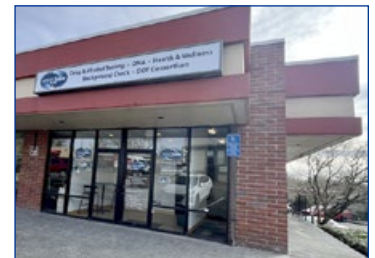
struction, but the menu and more information is on the [Google Maps page](#). They offer takeout and delivery through UberEats, DoorDash, and GrubHub. Call 503-800-2007.

### Smart Labs Now offers a full spectrum of health testing

Monday-Friday, 8:30 am-4:30 pm, 12670 NW Cornell

Conveniently located at the northwest corner of the "triangle" center between Old Barnes and Saltzman, [Smart Labs Now](#) has been open since August 2024. Whether you need periodic testing for legal or workplace compliance; want DNA, paternity, gender reveal, or heritage insights; need pre-employment screening; or just about any other reason you need independent test results, they provide fast, accurate, and confidential results.

This is the second location for this minority-owned business. The other location in NE Portland has been open for over a decade. They



contract with businesses and also welcome individuals who need their services. They have a mobile unit that provides convenient workplace

*Continued on page 11*

Like [Like us on Facebook for timely updates](#)

# Cedar Mill Business Roundup

Do you have news or events or know of something that you would like to see covered in the Cedar Mill News? Please write to Virginia Bruce at [info@cedarmillnews.com](mailto:info@cedarmillnews.com)

## Donate stuffies!

Through March 19, 7 am-4 pm daily, Haven Coffee Shop, 800 NW Murray Blvd

[Haven Coffee](#) has graciously agreed to participate in the Youth Charity League/Project Lemonade annual stuffed animal drive again! If you have any gently used stuffed animals you'd like to donate, please stop by. Our goal is to collect and donate 2000 stuffed animals so that [Project Lemonade](#) can include them in gift packs to foster kids.

## Bethany Athletic Club's Spring Break Camp

March 24-28, 8-5, Members: \$360/ Non-members: \$460, 15670 NW Central Dr.

Looking for a fun and enriching way to keep the kids busy this spring break? Bethany Athletic Club has you covered. Kids ages 5-12 can enjoy an action-packed week filled with exciting activities, social fun, and new adventures at Bethany Athletic Club's Spring Break Camp. Open to both members and non-members, this camp offers a perfect mix of physical activity and creativity.

Camp Highlights: A field trip on March 27 (\$20), lunch available for \$10 per day, flexible pickup and drop-off options: Early drop-off (7-8 am) and late pick-up (5-6 pm) available for \$10 each

With a safe and supportive environment, Bethany Athletic Club's experienced staff ensures every camper has a memorable and engaging experience. Spots are

filling up fast. Register now on the [sign up page](#) to secure a place for your child. For more details, visit [Bethany Athletic Club's website](#).

## Noyes Development expands services to include high-performance remodels

Homeowners looking to upgrade their living spaces with energy-efficient, high-quality renovations now have a new option. Noyes Development, long recognized for its expertise in high-performance



custom homes, has expanded its services to include high-performance remodels.

With a commitment to cutting-edge building techniques, [Noyes Development's remodeling services](#) focus on enhancing energy efficiency, durability, and indoor air quality. The company's approach ensures that homeowners not only achieve their design goals but also enjoy long-term cost savings through lower energy bills.

Each remodeling project is designed to exceed industry standards, with a meticulous focus on detail and craftsmanship. Whether homeowners are looking to simply update their interiors, improve energy performance, or reimagine their space entirely, Noyes Development provides solutions that stand the test of time.

The company is now offering free consultations to homeowners interested in learning more about the remodeling process. During the consultation, Noyes Development's team will discuss project details, explain their approach, and schedule an on-site visit. For more information or to book a consultation, homeowners can contact [custom@noyesdevelopment.com](mailto:custom@noyesdevelopment.com).

## Forest Heights Pilates: A Local Reformer Pilates Studio

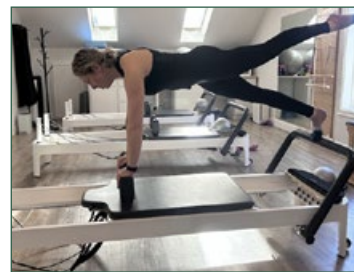
Michelle Lontai's Forest Heights Pilates studio offers a welcoming atmosphere perfect for fitness enthusiasts of all levels. With four

state-of-the-art reformers and a variety of additional Pilates equipment, the studio is designed to accommodate both small group classes and individualized attention through private or semi-private lessons.

Michelle, a comprehensively trained and certified Pilates instructor with over 15 years of experience, personalizes each session to meet the unique needs of her clients. This approach ensures that whether you're a beginner or an experienced athlete, you will receive a tailored workout that challenges your body and helps you reach your fitness goals.

The intimate class size of four allows for a personalized experience, where Michelle can closely monitor form and provide feedback to each participant. Her friendly and approachable demeanor creates a supportive environment where everyone feels comfortable to explore their capabilities.

Reformer Pilates is known for its numerous benefits, including improved strength, flexibility, and posture. It is particularly effective for both amateurs seeking to enhance their fitness journey and



athletes looking for cross-training options. To encourage newcomers, Michelle generously offers the first group class free of charge, allowing you to experience the studio and its benefits risk-free.

Whether you are looking to build strength, rehabilitate an injury, or simply enjoy a new fitness routine, Michelle Lontai's Forest Heights Pilates studio is the perfect place to start your wellness journey. Come in, meet Michelle, and discover how Pilates can transform your body and mind. To schedule your complimentary session in a small group, reach Michelle at [ForestHeightsPilates@gmail.com](mailto:ForestHeightsPilates@gmail.com) or 503-853-9934.

## Bethany Athletic Club's 2025 Kids Summer Camp

This is the perfect way for kids to stay active, engaged, and entertained all summer long. Located in the Bethany Village area, this camp offers a variety of exciting activities designed for children in and around Portland and Beaverton.

The camp is divided into two age groups: Camp Adventure (Ages 5-7); Camp Explorer (Ages 8-12). Running from June 11-August 22, camp hours are Monday-Friday,



8-5, with early drop-off at 7 am and late pick-up until 6 pm available for an additional fee.

Camp Highlights: Daily swimming; weekly field trips to places like the Oregon Zoo, bowling alleys, museums, and more; End-of-summer party on August 22.

Pricing and Extras: Members: \$360 per week; Non-members: \$460 per week. Field trips: \$20 per day; Lunch available: \$10 per day (\$20 on field trip days).

With a fun and safe environment, Bethany Athletic Club's experienced team ensures a summer full of adventure, learning, and lasting memories. Spots are limited. Register today to secure a place for your child. For more details and registration, visit [Bethany Athletic Club's website](#).

## Fraud is on the rise! Protect your finances and identity with these security tips

With the rise in cybersecurity breaches and identity theft, Sunset Credit Union wants to remind you of some security measures everyone should take to help protect themselves from identity theft: 1) Closely monitor all credit accounts and loans, to catch and report any suspicious activity on any one of those accounts; 2) Immediately report any suspicious credit or loan account activity to the financial

*Continued on page 10*

The Cedar Mill News © 2025

Published monthly by

Cedar Mill News LLC

3270 NW Kinsley Terrace, 97229

Online: [cedarmillnews.com](http://cedarmillnews.com)

Copy Editor: John Ramey

Managing Editors: Evan Kinswood, Seojin Ha

Editors: Sue Wendel, Victoria Jimenez,

Tasyah Ahmed, Anjali Sanjeevan, Jimin Lee

Paper Distribution: Mark Lewis

Website Production: Jack Stanley

Publisher/Editor: Virginia Bruce

503-803-1813

[info@cedarmillnews.com](mailto:info@cedarmillnews.com)

Opinions expressed in this publication are not necessarily those of its advertisers.

Printing courtesy of

[Pacific Office Automation](#).

Web hosting courtesy of

[Tidal Media Group](#)

Print circulation 1000, online 5000+

**CPO News**

**March CPO 1 meeting: What to expect when I call 911**

Tuesday, March 11, 7-9 pm, virtual only [online via zoom](#)

Amy Jo McCarville, Public Education Coordinator for Tualatin Valley Fire & Rescue (TVF&R), will explain how calls are routed and who shows up in an emergency. "As an all-hazard response agency, Tualatin Valley Fire & Rescue (TVF&R) provides emergency response well beyond fire suppression. Residents are often surprised to learn that as many as 80 percent of the calls crews are dispatched to are medical in nature."

If you can't attend our meetings, they are recorded and available on the [CPO 1 YouTube channel](#) for viewing at your convenience. Visit our YouTube channel and subscribe! The [CPO 1 Facebook Group](#) is a good place to discuss current issues and get timely updates.

**New parks in our future? Not soon, says the district**

There are three large undeveloped properties owned by Tualatin Hills Park & Recreation District (THPRD) in the Cedar Mill/Bethany area. We asked the district for an update. None of them are slated even for planning in the near future. If you have a chance to talk to any of the candidates for the [three open THPRD Board positions](#), please ask them if our area can be a priority.

Q: I'm aware that the Findley property is mostly a wildlife preserve... any plans for public use?

A: The property formerly owned by the Findley family is now called Bronson Creek Greenway. Most of the 25-acre site is [dedicated to wildlife](#). Staff and contractors recently completed habitat improvements geared towards frogs and turtles. This included reshaping the floodplain, which had been modified for agriculture, to hold more water and lowering the banks of the pond for frog and turtle nesting and access. Large logs were added to provide basking sites for reptiles. Thousands of native trees, shrubs, and herbs



**March joint CPO 6 & 7 meeting: Traffic issues at SW 185th & Baseline**

Monday, March 10, hybrid at Portland Community College Willow Creek Center, 241 SW Edgeway Dr., and [online via zoom](#)

Traffic conditions on roads near the TriMet crossing on 185th Avenue and Baseline Road definitely need improvement. These traffic conditions could worsen as housing and traffic increases in this area. We hope to hear how Hillsboro, Beaverton, Washington County and TriMet are coordinating to identify possible solutions and address funding issues.

**Development applications**

**Catlin Gabel expansion**

[Special Use, Master Plan.](#)



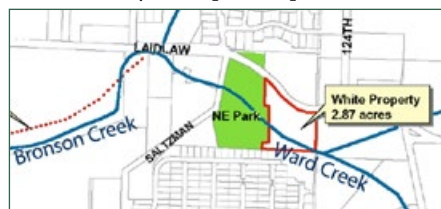
[and Development Review](#) for the expansion of Catlin Gabel School main campus and Property Line Adjustments to consolidate lots. The original application in 2021 was to develop a new [Middle School](#). The application has had several revisions since then, [modifying the campus layout](#). The application was accepted by the county on January 2. Comments are due by March 6. [Visit this page](#) to submit your comments.

were planted throughout the site in December and January.

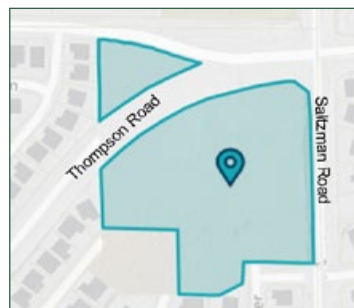
The district's Trails Functional Plan is aligned with the site and space has been left along NW Laidlaw Road for future public access, but no plans or funds have been allocated for development.

Q: The Northeast Park is near a lot of new development that is "in-district." Those homes have basically no park areas. Any movement to develop plans for recreation?

A: [Northeast Park](#) is on the district's five year Capital Improvement



Plan to begin design work in 2028 and we anticipate construction being complete in early 2032. However, we are currently updating the district's Parks Functional Plan which sets prioritization criteria for new park development. Once complete, Northeast Park would be scored and ranked compared to district needs. Although there are some "in-district" homes near the site, the majority of properties nearby are still out of district, so the likelihood of development in the near future is low.



Q: With the new road alignment through the former Lehman property at Saltzman & Thompson, what is the remaining acreage for recreation? Any schedule for development?

A: After the road realignment, there will be two parcels totaling 5.27-acres. The larger parcel is approximately 4.5-acres and more suited for development. The smaller parcel is approximately half an acre. There are no current plans for site development.

\*THPRD worked with Washington County in the early 2000s to require all new development within THPRD's ultimate service boundary to annex into the district. Many of our residential areas and a good chunk of the commercial areas were developed prior to that so they are [not in the district](#).

Three great March themes  
 St. Patrick's Day,  
 Crafts,  
 and Garden

Open  
 Tues-Sat 10-4  
 Sundays 12-4

Second Edition Resale  
 Sales benefit Cedar Mill & Bethany Libraries

\$\$\$ CASH \$\$\$  
 FOR  
 JUNK CARS

FRED'S  
 AUTO REMOVAL  
 Call or text 503-810-3061  
 FredsAutoRemoval.com

**WALKER**  
 GARBAGE & RECYCLING SERVICE  
 SINCE 1948  
 SERVING SUBURBAN NW PORTLAND

**Recycle+**

- Committed to expanded recycling!
- Look out for our new Recycle+ sprinter van.
- Learn more and sign up here! [walkergarbage.com/recycle](http://walkergarbage.com/recycle)

**Walker Garbage**  
 503-531-6330  
[walkergarbage.com](http://walkergarbage.com)  
[info@walkergarbage.com](mailto:info@walkergarbage.com)  
 Office Hours:  
 M-F, 8 am-4:30 pm

Connect with our members for fun and networking!

**Cedar Mill**  
 BUSINESS ASSOCIATION

Join us at our next meeting—second Tuesday of each month at noon—learn more on our website!  
[cedarmillbiz.com](http://cedarmillbiz.com)

Support the  
**Sunset High**  
 Marching Band  
 & Auxiliary

**Bottle/Can Drive**  
 Saturday, March 8, 10 am - 1 pm  
 Sunset Church, 14986 NW Cornell  
 Please drop off any redeemable non-crushed cans, and plastic and glass bottles

**As trusted leaders in the Bethany and Cedar Mill communities, we are committed to making your real estate dreams a reality. With unmatched market expertise and a personalized approach, we are with you every step of the way.**




**BERKSHIRE HATHAWAY HOMESERVICES** | **NORTHWEST REAL ESTATE**

Floyd Stewart • 503-740-0146  
FloydStewart@bhhsnw.com

Kylie Davis • 971-719-5773  
KDavis@bhhsnw.com

**SPRINGTIME IS MULCH TIME** **CEDAR MILL Landscape Supply**

MULCH  
BARKDUST  
SOIL MIX  
SAND  
ROCK & GRAVEL

12700 NW BARNES  
LOCALLY-OWNED SINCE 1947



503-644-9101  
WE DELIVER OR YOU HAUL  
www.CedarMillLandscapeSupply.com

**Support the local businesses that support the News. They make it possible. Tell them you saw it in The Cedar Mill News!**



**ANTHOLOGY OF BEAVERTON**

YOUR LUCKY DAY:  
*St. Paddy's Party*

Monday, March 17 / 10 am – 2 pm

Join us for festive Emerald Isle spirit, including:

- Irish-inspired refreshments
- Live entertainment
- Fun activities
- Introductions and casual tours

Let's get together to toast the luck of the Irish!

**RSVP TODAY: 971-247-1472**

**ANTHOLOGY OF BEAVERTON**  
910 NW 185th Ave. / Beaverton, OR  
Independent Living / Assisted Living / Memory Care  
AnthologyBeaverton.com



## 55 Years of Protecting Public Health

Clean Water Services (CWS) has spent more than five decades serving the community and local environment. It may be hard to imagine now, but 55 years ago the Tualatin River was at times a mere trickle, slinking its way through garbage and waste throughout Washington County. The river was unrecognizable compared to the beautiful resource it is today. Ominous “DO NOT SWIM HERE” signs warned

permits for its four water resource recovery facilities and the municipal stormwater system into a single integrated permit that can be managed across facilities and the Tualatin River Watershed. This



*A historical photo of Henry Hagg (left) and W.T Putnam standing over the Tualatin River in 1958 blends into a modern photo of people kayaking on the same river.*

people approaching local waterways. In 1969, the state imposed a moratorium on suburban building in Washington County due to the pollution.

What is now Clean Water Services was created to respond to this public health crisis. On February 3, 1970, Washington County voters approved the formation of the Unified Sewerage Agency (USA) to consolidate 26 wastewater treatment facilities (most of them built by residential developers) into one utility. Over the next few years, ground broke for the Rock Creek and Durham Water Resource Recovery Facilities. The Forest Grove and Hillsboro facilities underwent modifications to meet the needs of the community and the river. The facilities centralized a scattered system of inefficient wastewater treatment plants, creating what would eventually be one of the most efficient and advanced utilities in the world.

kind of permit remains a rarity, and none of the watershed-based permits that exist today are as complex as the one regulating the Tualatin River Watershed. The Environmental Protection Agency even uses this permit as a case study. NPDES permits are renewed every five years to ensure they keep up with the needs of the nation's waterways and growing population, while adapting to a rapidly changing climate.

Over time, the Unified Sewerage Agency evolved into a wastewater treatment regional utility that recovers valuable resources, helps slow down and clean stormwater, and returns water to the river while protecting the environment and public health. The Unified Sewerage Agency was renamed Clean Water Services in 2001 to reflect its broader role in protecting water resources following its formation.

Fifty-five years after the community voted us into existence, the Tualatin River is cleaner than it has been in generations, and is a vital resource for habitat, irrigation, drinking water, and recreation. Clean Water Services is dedicated to working in partnership with others to safeguard the river's health and vitality, ensure the economic success of the region, and protect public health for over 600,000 residents and businesses in urban Washington County. [Learn more about our history here.](#)

In 2004, CWS received a first-of-its-kind, watershed-based, National Pollutant Discharge Elimination System (NPDES) permit. Issued under the federal Clean Water Act, this watershed-based NPDES permit combines the

**WashCo Forum: Land Use**  
March 10, opens 11:30 am, The Old Spaghetti Factory, 10425 NE Tanasbourne Dr, or [via zoom](#).

Sadie Carney from the Department of Land Conservation and Development will share the roles of DLCD, possible changes to land use rules about what can be built and how, and how we can participate in those decisions.

The monthly [Washington County Public Affairs Forum](#) meetings are where community leaders and residents connect to discuss public policy issues. Our meetings are hybrid: in-person and via Zoom.

## What to expect when I call 911 for a medical emergency

As an all-hazard response agency, Tualatin Valley Fire & Rescue (TVF&R) provides emergency response well beyond fire suppression. Residents are often surprised to learn that as many as 80 percent of the calls crews are dispatched to are medical in nature. All firefighters have a minimum Emergency Medical Technician (EMT) license, and every TVF&R apparatus has at least one paramedic who is able to deliver advanced lifesaving care on scene.

### How are 911 calls for medical issues dispatched?

First response agencies in Washington County partner with Washington County Consolidated Communications Agency (WCCCA), the primary dispatching agency countywide. All 911 calls come into WCCCA, and call takers ask specific questions based on “run cards” generating which questions to ask, and which fire and medical resources to dispatch to the incident. One aspect of Washington County’s recent updates to its Ambulance Service Agreement included the dispatching of ambulances by WCCCA with the primary private service provider.

### Why is there often a fire engine (or truck) that responds to a 911 medical call along with an ambulance? Can I request only an ambulance when I call 911?

Typically, a fire vehicle and an ambulance are both dispatched to a medical call. Since fire stations are more prevalent throughout TVF&R’s service area, fire resources are often able to arrive sooner and begin triaging patient care. TVF&R apparatus have the same advanced lifesaving capabilities as an ambulance, and often the company officer (supervisor of the unit) can determine if a basic lifesaving ambulance will suffice to transfer the patient. This helps to keep a higher level, advanced lifesaving unit in the system, available to respond to more critical calls. There are limited cases in which only an ambulance will respond, including a doctor’s scheduled transfer of a patient to a higher level of care.

### If I’m calling on behalf of someone else, how can I be prepared to help when first responders arrive?

If you are calling 911 on another’s behalf, make sure to have as much information as you can including the person’s name, date

of birth, any medications and/or allergies, and medical history. Having this information helps us provide the best care possible in the shortest amount of time. We highly recommend placing a red medical card on



your fridge with this information for each person in your family. First responders know to look there, and it can save critical moments during a medical emergency.

### What happens when TVF&R shows up to my house for a medical emergency?

As soon as our crews show up, we will bring in our medical equipment and begin using our medical skills—oftentimes performing steps that may save a life. Once an ambulance arrives, we help get the patient onboard and heading to the hospital where they’ll be cared for by emergency room doctors and other medical specialists.

### Why do you carry so many bags?

The sicker or more injured the patient is, the more medical kits we bring to a call. We want to make sure we can immediately treat whatever signs and symptoms a patient is experiencing. We have five medical kits we can bring on any medical call. Each kit is designed to meet a certain set of patient needs. Kits may contain medication, oxygen, unique medical equipment, wound care supplies, splints and bandages, or even items to help a patient breathe. We also bring a cardiac monitor with us on every call.

### What does the big heart monitor do?

Our cardiac monitor-defibrillators are used to evaluate nearly every patient we encounter. Along with monitoring a patient’s heart and vital signs, these tools create advanced 12-lead electrocardiograms that can be sent ahead to hospital emergency departments and deliver lifesaving electrical shocks for patients who have suffered cardiac arrest.

### Does TVF&R transport patients to the

### hospital or primarily treat on-site?

Ambulance transport is determined at the county level. In Multnomah, Washington, and Clackamas counties, American Medical Response (AMR) is the primary ambulance service provider. In Newberg and its surrounding area in Yamhill County, TVF&R is the primary ambulance service provider. In Clackamas and Washington counties, there are county-specific agreements in place for TVF&R to provide supplemental transport services.

### How does ambulance transport billing work? Is there a difference in cost to the patient?

TVF&R charges a base rate or flat fee for transporting a patient to the hospital as well as a mileage fee from the pick-up location to the hospital. Most of the time, we obtain insurance information from the hospital. Once benefits are verified, we will send the claim directly to the insurance company. After payment is received from insurance, we will bill the patient the remaining balance. Pricing is subject to the county the patient is transported in.

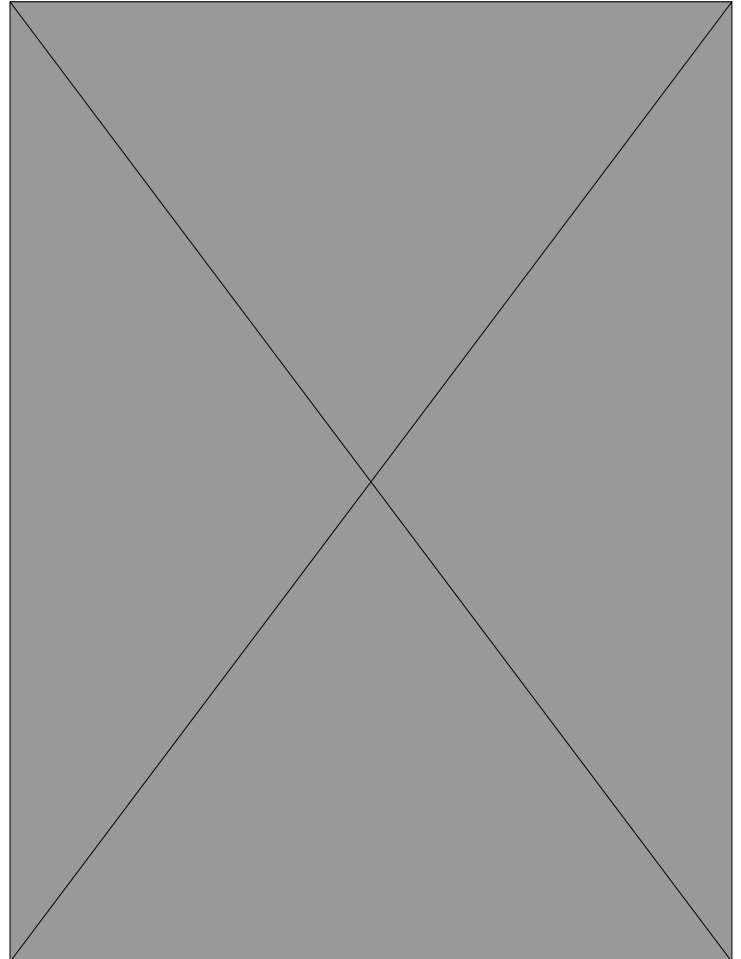
## Meals on Wheels lunches at The Opal

Mondays, 11-1 pm, The Opal Apartments, 12691 NW Dogwood

We have a Meals on Wheels location at our apartments and would love to get the word out to those in the area! The Opal is a one-of-a-kind apartment complex. We are the first, LGBTQ+ culturally specific low-income housing for adults 55 and older. With this Meals on Wheels site, everyone is welcome, but we are wanting to make sure people know that our location is LGBTQ+ focused and friendly, but everyone is welcome regardless of their sexuality.

We host our lunches every Monday (unless otherwise stated) from 12-1 pm. People are encouraged to arrive by 11 so they can socialize and get to know one another. Lunch is served at 12 pm, clean up begins at 1 pm. Anyone over the age of 65 can join and donations of any amount are encouraged and accepted.

Sign up to get  
The News in your inbox:  
[cedarmillnews.com/  
sign-up](http://cedarmillnews.com/sign-up)



**NOW OPEN**  
**BKIDS**  
 DAYCARE + PRESCHOOL  
 located in bethany village | enroll today  
[bethanyathleticclub.com/bkids](http://bethanyathleticclub.com/bkids)

**CPO1** Neighbors Working Together!  
**Tuesday, March 11**  
 7-9 pm on Zoom and in-person at Cedar Grove Community Room, 13400 NW Cornell  
**What happens when you call 911 for a medical emergency?**  
 TVF&R explains how calls are handled and which responders are sent  
 Open to all—visit Facebook or the web page for the zoom meeting link, and sign up for email news!  
[facebook.com/CPO1.WaCounty](https://facebook.com/CPO1.WaCounty)  
[WashCoCPO1.org](http://WashCoCPO1.org)  
[cpo1leaders@gmail.com](mailto:cpo1leaders@gmail.com)  
 Community Participation Organization serving the communities of Cedar Mill, Cedar Hills, Bonny Slope


**Need a DJ for Your Party or Event?**  
**DJ Trex D**  
 503-332-8572  
 Instagram [@djtrexd](https://www.instagram.com/djtrexd)  
 \* Professional experience since 2019  
 \* Current work permit and DJ liability insurance

**Learn about advertising in Cedar Mill News**  


**BETHANY**  
 FAMILY PET CLINIC  
**503-447-2184**  
[BethanyFamilyPetClinic.com](http://BethanyFamilyPetClinic.com)  
 15166 NW Central Drive  
 Portland, OR 97229  
**OPEN 7 DAYS A WEEK!**

**Timmco**  
 INSURANCE  
 Bob Rosson  
 Steven DaSilva  
 Jenni Lenc  
 12700 NW Cornell Road  
 503-644-5333  
[www.timmco.com](http://www.timmco.com)  
**Safeco Insurance**  
 Member of Liberty Mutual Group

**Hydrant Flushing**  
 Improving your water quality  
[tvwd.org/flushing](http://tvwd.org/flushing)  
  
  
 TUALATIN VALLEY WATER DISTRICT

**SCHOCH DAIRY**  
  
 AND CREAMERY  
*From the farm to your fridge. In hours, not days.*  
 Fresh milk daily, 7 am - 9 pm  
 24335 NW West Union Rd • 503-647-2638  
[schochdairy.com](http://schochdairy.com)

  
 Lynda Dowling-Wu, Broker  
 503-810-6166  
[dowlingwurealty@gmail.com](mailto:dowlingwurealty@gmail.com)  
**MORE REALTY**

**Garden & Nature News**

**Treekeepers of Washington County programs**

We work to protect and advocate for trees in urban unincorporated Washington County. Don't miss our upcoming events! All of them are free. [Visit the Treekeepers website](#) to learn more.

**Join Our On-call Ivy Crew**

English ivy hangs on through winter at a time trees are particularly vulnerable. The excess weight can increase risks for trees during winter storms. Help us save trees by removing ivy and other invasive plants that threaten them. Weather makes it hard to schedule events, so [please sign up](#) and we'll notify you when there is a good weather window so we can schedule an ivy pulling event.



**Native plant sale at nature center**

Order plants now through Sunday, March 30, \$30 minimum to pre-order

Friends of Tualatin Hills Nature Park and Tualatin Hills Nature Center host the Spring Native Plant Sale in partnership with Sparrowhawk Native Plants. Thousands of habitat friendly native plants are available as well as information about the benefits of native plants. Be sure to complete your order while supplies last. Please visit the [event website](#) for more information about ordering and picking up orders in May. You can learn more on the [Sparrowhawk Native Plants website](#). Preordering is required. First, you select from 115 species of premium-quality native plants. Then, at check-out, select to pick up your order at the Tualatin Hills Nature Center, on May 9 or 10. Then visit the Tualatin Hills Nature Center at 15655 SW Millikan Way to pick up your plants! The Nature Mobile will be there to entertain your kids, and there will be a coffee cart on site.

Proceeds from the sale go toward future Nature Park improvements and environmental education programs.

**Skyline Grange native plant and bareroot tree sale**

Friday-Saturday, April 4-5, 9 am-5 pm, 11275 NW Skyline Bl. [Optional Pre-order by March 23](#)

Native Plant Section has over 90 species of native wildflowers and shrubs including native plants that thrive in sunny, shady, wet, or dry locations. These plants are good for

erosion control, beneficial for birds, bees, and other wildlife. Each species has an informative display sign.

Download [Pre-Order Form](#) and [Plant Descriptions](#) or request it by emailing [skylinegrange894@msn.com](mailto:skylinegrange894@msn.com). Native Pre-Order Forms must be returned by 5 pm on Saturday, March 23.

Bareroot Section includes a good selection of bareroot fruit-bearing, shade, flowering, and ornamental trees and ornamental shrubs. Most of these bareroot trees and shrubs are not true PNW "natives," but they

have been selected for their compatibility to thrive in our area without out-competing with plants in our local native habitat. Not available as pre-orders, no cane berries this year. All proceeds will go to Skyline

Grange's Capital Improvement Fund. Questions or to volunteer email [skylinegrange894@msn.com](mailto:skylinegrange894@msn.com)

**Washington County Master Gardener Association events**

OSU Extension Master Gardener volunteers and WCMGA offer a lineup of classes, lectures and family friendly events year round. All events and details can be found on the [WCMGA events calendar](#).

**Gardening With Pacific Northwest Native Plants**

Saturday, March 22, 10 am-12 pm, PCC Rock Creek Campus, Bldg. 4, Rm. 103, no registration required, free

Learn about the native plants that thrive in the PNW garden, how to naturescape in support of wildlife and pollinators, and consider the possibilities the Backyard Habitat Certification Program offers through its customized yard assessment. Please visit the [event page](#) for more information.

**Perennials: How to Choose, Plant, and Maintain for Year-Round Flowers**  
 Saturday, March 29, 10 am-12 pm, PCC Rock Creek Campus, Building 7, Room 105, no registration required, free

This class will discuss different types of perennials and focus on long-blooming varieties. We will discuss how to best care for them in terms of planting, pruning, fertilizing, pest control, and general maintenance, plus tips to extend blooming time for year-round color. Please visit the [event page](#) for more information. For information and maps to our gardens, please visit our [WCMGA gardens page](#).

**Park News**

**THPRD Board of Directors Election**

Are you passionate about parks and recreation? Consider running for one of the three open seats on the THPRD board of directors. File by March 20. Learn more at [the elections page](#).

**Spring Break Planning**

THPRD has you covered with spring break camps. From sporty to outdoorsy, there's something for every kid (ages 4-13). Please visit our [spring break camp page](#) for options.

**BSD Donation Drives**

Please help us support the collection of NEW or very gently used shoes and laundry items needed for Beaverton School District families in need. We're collecting donations of new shoes (Children's size 10 toddler to 5 and Adult sizes 5-10 men/women) at the Tualatin Hills Aquatic Center and Aloha Swim Center. We're collecting laundry supplies at the Beaverton Swim Center and The Babette Horenstein Tennis Center.

We are also collecting new or gently used prom dresses for BSD students throughout the month of March. All sizes and styles are welcome and donations can be dropped off at any THPRD facility.

**Community Meeting for Future Pickleball Facility at HMT Recreation Complex**

March 11, 7-8:30 pm, Tualatin Hills Nature Center, Robin's Nest Room, 15655 SW Millikan Way

THPRD is progressing on plans for the future pickleball facility at the Howard M. Terpenning Complex. We welcome community members to submit questions and comments ahead of time by emailing them to [T.Bonnin@thprd.org](mailto:T.Bonnin@thprd.org).

**Holi Celebration**

Saturday, March 15, 3:30-5 pm, Parivar Park, 7765 NW 167th Ave.

Bright neon powder-covered revelers will be seen at the annual Hindu celebration. Chinmaya Mission of Portland and THPRD co-host the celebration where we expect over 3,000 people will attend, enjoying Bollywood music, food vendors, dancing, and of course color play!

**Monday Night Therapeutic Recreation**

Monday, March 10, 6:30-8:30 pm, Horenstein Tennis Center, 15707 SW Walker Rd., ages 16+, contact for fee or registration information

In partnership with THPRD Inclusion department, we will be introducing tennis to patrons experiencing disabilities. Please visit the [Adaptive and Inclusive Recreation webpage](#) for details and additional programs.

**Sunset Shamrock Splash**

Saturday, March 15, 1-4 pm, Sunset Swim Center, 13707 NW Science Park Dr, children 15 and younger with parents, [register on THPRD website](#), \$10 (in-district)/\$12.50 (out-of-district)

Join us for fun crafts and snacks followed by an open swim! Cost includes crafts and entrance to open swim. Parent participation encouraged. Normal open swim rules apply. Only participating children need to be signed up for a

time slot, assisting adults will not be charged additionally for the Open Swim. Please visit the [event webpage](#) for details.

**Women's Wellness Fair**

Saturday, March 29, 11-1:30 pm, Cedar Hills Rec Center, 11640 SW Park Way, registration required, free

There will be fitness and nutrition demonstrations from THPRD staff as well as vendors and resources focused on women's health. Please visit the [event page](#) for more information and registration.

**Volunteer garden work at Ridgewood Park**

Saturday, March 8, 9-11:30 am, Ridgewood Park, western end of SW Park Way at 96th Ave., free

Help us spruce up the Community Garden at Ridgewood Park! No gardening experience necessary. Visit the [event page](#) for more details.

**Volunteer garden work at Tualatin Hills Nature Park**

Saturday, March 15, Tualatin Hills Nature Park, 10 am-12 pm, 15655 SW Millikan Way, free

Help us spruce up the Native Plant Garden! Volunteers will help weed and mulch, as needed. Please bring a reusable water bottle to drink from throughout the day. Tools and gloves will be provided. No gardening experience necessary. Visit the [event page](#) for more details.



**Don't Settle for Ordinary**

Discover maintenance-free living in an award-winning community!

Call **503-946-5427** to schedule a tour.



**TOUCHMARK IN THE WEST HILLS**

2533685 © Touchmark, LLC, all rights reserved



**Competitive Athletes Excel At Our 77 Fitness Training Center**  
503-645-3535 | [sunsetac.com](http://sunsetac.com)



**CIEL**  
SENIOR LIVING  
of Cedar Mill

**CONNECT. INSPIRE. ENRICH.**  
*Live Well.*

At Ciel of Cedar Mill, we provide assisted living and memory care services in a comforting and luxurious environment. Through personalized service and thoughtful care, we support our residents in living a fulfilled, comfortable lifestyle of well-being.

*Step into a life of freedom and connection.*  
Call today to schedule a tour! (503) 427-1831

9860 NW CORNELL RD. • PORTLAND, OR 97229  
CIELSENIORLIVING.COM

WIM 8308

Museum, continued from page 8  
By December the board and the management had to close the building and furlough the staff.

5 Oaks board members gave us this statement, "Our staff and board are heartbroken that Washington County does not see the value, both historically and financially, that

a Facebook Group to facilitate further discussion and provide updates to a wider audience.

We invite community members to express to the Commissioners their support for the continuance of an institution to share and celebrate all aspects of Washington County's [history. Information on](#) how to contact them is here.



A panel from the exhibit "[This is Kalapuyan Land](#)"

Five Oaks Museum provides our incredible community. This museum has dedicated the past five years to local storytelling and collection care, providing impact in classrooms and community centers alike."

The Washington County Board of Commissioners (BCC) received a proposal from 5 Oaks in early February with "several funding proposals/requests." The BCC discussed the [future of the Museum at their](#) Work Session on February 18. Ann Ober, Assistant County Administrator, and members of her staff recommended against the county taking on a new responsibility that had been financially unfeasible for the non-profit. Discussion among the Commissioners focused only on how to shut down the operation and distribute the collection. The first step in that process is to assess the value of the records and items in the collection.

A group of local history buffs has been meeting as the History Roundtable for many years, both in person at the museum and virtually through COVID and beyond. We met in January and have been working since then to understand the fiscal situation of the museum and what the options are to bring it [back to life](#). We drafted a resolution asking the county to provide emergency supplemental funding to ensure the safety of the [collections](#). We created

**TriMet bus route changes**

TriMet is adding new service to employment centers in Hillsboro and North Portland as of Sunday, March 2. We're [improving several bus lines](#) to better serve riders' needs, especially those who count on TriMet to get to and from jobs and classes.

[Line 47-Main/Evergreen](#) will serve a new route with stops at Intel's Ronler Acres campus and the Willow Creek Transit Center in Hillsboro. This improvement connects Line 47 riders to the MAX Blue and Red lines and additional bus lines at Willow Creek. It also provides direct service to one of the region's largest employment centers.

The new route means Line 47 will no longer serve Northwest Bronson Road, 174th Avenue and Laidlaw Road, due to low ridership. However, we're adding more trips on [Line 67-Bethany/158th](#), both earlier in the morning and later in the evening on weekdays, so we can better serve riders in the Bethany area. Line 67 will continue to provide TriMet bus service to the Portland Community College Rock Creek Campus.

Line 48-Cornell bus arrival times are also being [adjusted "six minutes or more."](#) 48-Cornell runs between Hillsboro Transit Center, Hillsboro Airport, Tanasbourne, Cedar Mill, and Sunset Transit Center, along Cornell and Barnes.

**Earthquakes on Skyline Ridge**

[Wednesday, March 28, 7-8:30 pm, Skyline Grange Hall, 11275 NW Skyline Bl, free, open to all](#)

Jay Wilson will provide an overview of the threat and risks of a major earthquake for the Skyline Ridge area and the CEI Hub (fuel storage tanks) in Linnton. Wilson is the former Chair of the Oregon Seismic Safety Policy Advisory Commission, and former Programs Coordinator for Oregon Emergency Management. This talk is brought to you by Skyline Grange's Education Committee as part of its [Skyline Living Series](#).

**The Detox Spa**  
LYMPHATIC MASSAGE  
www.thedetoxspa.com  
971-217-6159



At The Detox Spa, we believe that a massage can be both relaxing and provide health benefits. That's why we offer The Detox Massage designed to help you cleanse, heal and restore. Lymphatic drainage massage supports the immune system, aids digestion, balances hormones, improves the appearance of cellulite, reduces skin swelling and acne.



**Our Services :**  
Lymphatic Massage  
Gua Sha Facial  
HydraFacial  
Red Light Therapy  
Ballancer Pro  
Compression

**Book Now**  
Code: 25OFF for \$25 off your first 90 minute massage





**Library News**

Find event calendars, storytime schedules and more at [Library.CedarMill.org](http://Library.CedarMill.org). To learn more and register for these events, visit the [Event Calendar page](#) and select the date for the event you're interested in. For more information, call (503) 644-0043, visit the website, or email [askuscml@wccls.org](mailto:askuscml@wccls.org).

Abbreviations: CML is Cedar Mill Library, 1080 NW Saltzman Rd.; BLA is Bethany Library Annex, 4888 NW Bethany Blvd, Suite K-2; BL is [Bethany Library](#), 15325 NW Central Drive, Suite J-8y.

**Kids**



**Board Game Day!**  
Sunday, March 9, All Day, CML, Ages 5+

Drop in to play board games with family or friends.

**Create Your Own Dog Man Book**  
Monday, March 24, 10:30-11:30 am, CML, Ages 6-11

Use your creativity to make your own book celebrating this popular character.

**Storytimes**

Storytimes for all ages plus several world language storytimes. Learn more at [Library.Cedarmill.org/Storytime](http://Library.Cedarmill.org/Storytime).

**Teens & Tweens**

**Teen Game Night: Super Smash Tourney**  
Friday, March 7, 6-8 pm, CML, Ages 10-18, Registration Required

Compete in our Super Smash Bros. Ultimate Tournament. Meet your friends and play Switch, Wii, and Gamecube games together.  
**Return to the Hunger Games**  
Friday, March 14, 6-8 pm, CML, Ages 10-18, Registration Required

Celebrate the release of the new Hunger Games novel at our themed after-hours event. Try your hand at trivia, plant identification, Nerf archery and other games inspired by the series.

**Adults**

**Intro to Managing Your Privacy Lecture**  
Tuesday, March 11, 12-1:15 pm,

**CML, Ages 19+, Registration Required**

We'll review how ads target us online and cover tracking, browser



settings, and password managers.  
**Top Wildflower Hikes Near Portland**  
Wednesday, March 19, 6:30-7:30pm, CML, Adults

Discover where to see colorful blooms with guidebook author and avid hiker Matt Wastradowski.  
**English for Speakers of Other Languages: Intermediate**  
Thursdays, 3-5 pm, CML, Adults

Discuss themes, grammar, and vocabulary from the provided textbook. Hosted by Goodwill Industries.

**Technology Open Lab**  
Thursdays, March 13 & 27, 1-3 pm, CML, Adults

Get started with basic computer skills and practice with laptops, tablets, or cell-phones. Bring your own device or use one of our laptops.  
**Estate Planning Essentials: A Will Is Just the Beginning**  
Thursday, March 20, 6:30-7:30 pm, BLA, Adults

Receive practical advice on safeguarding your assets and healthcare wishes during and after your lifetime.

**Monthly Groups for Adults**

Questions? Write [askuscml@wccls.org](mailto:askuscml@wccls.org) and visit [cedarmillbethany.libcal.com](http://cedarmillbethany.libcal.com).

**Writers' Mill**  
Sunday, March 16, 1-3 pm, Hybrid CML/Zoom, Ages 16+, Registration Required

Combine drama and comedy to create some enticing dramedy at the Writers' Mill. Ria Russell will guide us, with news reports as the seed, and we'll all exercise our imaginations, wordcraft, and writing skills. Find out more on our website at [portlandwritersmill.org](http://portlandwritersmill.org), or ask a librarian. Everyone welcome—join us at Cedar Mill Library or over zoom.

**Owl Book Group**  
Friday, March 28, 10:30 am-12 pm, CML, Ages 16+

Discuss *The Heaven and Earth Grocery Store* by James McBride

*Online ordering now available*

Curbside delivery...  
visit our website to learn more  
[westernoregondispensary.com](http://westernoregondispensary.com)

**Open daily**  
8 am-9 pm

**WESTERN OREGON DISPENSARY™**

**760 NW Dale**

**NOYES DEVELOPMENT CO.**  
-PRESENTS-  
**CREEKSIDE AT WESTVIEW**

**65 NEW HOMES BEHIND WESTVIEW HIGH SCHOOL**

AWARD WINNING LOCAL BUILDER  
[NOYESDEVELOPMENT.COM](http://NOYESDEVELOPMENT.COM)

**BUILDING FOR A BETTER LIFE**

**MARIE CONSER**  
Oregon Real Estate Broker & Neighbor  
John L. Scott Real Estate, Sunset-Corridor

**John L. Scott REAL ESTATE**

**503.459.2726**  
[marie@marieconser.com](mailto:marie@marieconser.com) | [mariegetsold.com](http://mariegetsold.com)  
CEDAR MILL • BETHANY • OAK HILLS • SURROUNDING AREAS

Chairman's Circle 2020

*Care and Keeping*

**SENIOR LIVING TRANSITION SERVICE**  
INDEPENDENT LIVING + MEMORY CARE + ASSISTED LIVING + ADULT FAMILY HOME

OUR SERVICE IS COMPLETELY FREE TO CLIENTS!  
GIVE US A CALL TODAY, AND WE WILL HELP YOU NAVIGATE YOUR JOURNEY IN CHOOSING YOUR NEXT HOME.  
LET'S GO HOME

(503)444-8696 + [BESS@CAREANDKEEPING](mailto:BESS@CAREANDKEEPING) + [CAREANDKEEPING.COM](http://CAREANDKEEPING.COM)

Business News, continued from page 2 institution and/or lending institution; 3) Sign up for the fraud alerting services offered by the three credit bureaus to receive notifications about potentially fraudulent activity. You can do so by visiting [Equifax](#), [Transunion](#), or [Experian](#); 4) You can also place a freeze on all three credit bureau accounts to prevent fraudsters from opening new accounts using your identity. Visit each of their websites to learn more; 5) Join Sunset Credit Union and sign up for their FREE email/text alerts to notify you when your debit or credit card has been used. And be sure to [check out the SSP-FCU website](#) for additional security benefits offered by them.

Sunset Credit Union is open to anyone who lives, works, worships or attends school in Washington County. To learn more, visit their website at [spsfcu.com](http://spsfcu.com), give them a call at 503-643-1335, or stop their office located at 1100 NW Murray Blvd., #200.

## Office Space in Bethany Village

15292 NW Central Dr.

Bethany Village is excited to announce the availability of prime retail and office spaces for lease. Situated close to the rapidly expanding Sunset Corridor, yet free from the typical traffic congestion,



Bethany Village offers an ideal setting for businesses aiming to thrive in a vibrant community.

We provide a diverse range of spaces to meet various business needs, with professional and office suites ranging from 96 to 12,000 square feet. This flexibility accommodates a wide array of enterprises, including medical offices, educational institutions, and retail shops.

Bethany Village is already home to a variety of businesses, from specialized micro-restaurants to clothing boutiques, toy stores, and essential services like cleaners and shipping centers. The community also hosts several professional and educational suites, including dental and medical offices, tutoring organizations, and after-school programs.

By choosing to establish your business in Bethany Village, you'll become part of a well-planned, walkable neighborhood that seamlessly integrates residential, retail, and professional spaces within a healthy, natural environment. For more information about the available retail and office spaces, please [visit our leasing page](#).

## Viva Village Events: March 2025

Viva Village is a Beaverton-area grassroots organization of members and volunteers who focus on enhancing and expanding the ways we can age well. We provide connections, programs, volunteer services, and referrals so members can lead engaged, healthy lives. For more information visit the [Viva Village website](#). Please RSVP for all events by contacting [vivavillageor@gmail.com](mailto:vivavillageor@gmail.com) or 503-746-5082. Links for zoom meetings will be sent to those who RSVP. Members-only events are listed on the website and in the web version of The News.

### Women's Coffee (in person)

Wednesdays in March, 10 am-12 pm, New Seasons Market Cedar Hills, 3495 SW Cedar Hills Boulevard

Coffee and conversation. RSVP recommended.

### Age Café

Friday, March 7, 11 am-12 pm, Beaverton City Library, 12375 SW 5th Street

Small-group conversations exploring topics of interest to older adults. Interesting new topics each session. Registration for the Zoom link is available a month ahead on the library's website or check the Viva Village calendar for registration link.

### Online Viva Village 101

March 8, 10-11:30 am

An informational session for prospective members, volunteers, or anyone interested in Viva Village. Register on our website or contact the office for the Zoom link.

### Online Travel Talk

Monday, March 10, 7-8 pm

Let's Go to France! Wine, painted caves, a giant hole in the ground. Viva Villager, Gerry Lukos reprises her presentation of her trip to the beautiful city of Bordeaux, with visits to vineyards and a few of the ancient painted caves that are plentiful in the Dordogne region of France. Join us to revisit (or see for the first time) the beauty of Southwest France. RSVP for the Zoom link. Register on our website or contact the office.

### Viva Village Forum

Monday, March 17, 2-3:30 pm, United Methodist Church, Wesley Room, 12555 SW 4th Street, free

Planning for a Green Disposition. Refreshments served. RSVP recommended. Register on our website or contact the Viva Village office.

## Men's Coffee Break

Monday, March 24, 10-11:30 am, Market of Choice Cedar Mill (mezzanine), 250 NW Lost Springs Terrace in Timberland Town Center

Conversation and coffee. RSVP recommended.

## Online Viva Village Book Club

Tuesday, March 25, 1-2:30 pm

Selected book: "The Women" by Kristin Hannah. RSVP for the Zoom link.

## Introduction to Compassionate Communication: Non-Violent Communication

Saturday, March 22, 9 am-5 pm, The Beaverton Building, 12725 SW Millikan Way, Free, [preregister here](#)

Developed by Marshall Rosenberg, Nonviolent Communication is both a powerful communication tool and a philosophy of living that helps cultivate honest, meaningful relationships that come from the heart. It is useful for couples, friends, parents, and individuals interested in healing work. It offers a formula for communicating across differences, ensuring that our messages (and the messages we receive) are heard with clarity and compassion. In this one day workshop, participants will learn the Nonviolent Communication method and how to apply it to transform the way they treat others, and themselves. We will provide coffee and light snacks. We ask that participants bring their own lunches. We are located near food carts and several restaurants.

## PCC's Career Exploration Series

Wednesday-Friday, March 5-7, 10 am-noon, Willow Creek Opportunity Center, 241 SW Edgeway Dr, Hillsboro

This workshop introduces participants to PCC training programs designed to open doors to higher-paying jobs. Offered at no cost to students and community members through PCC's [Opportunity Centers](#), the three-day series helps participants identify their strengths, explore career paths, and create actionable plans for their futures.

PCC Opportunity Centers offer a range of other no-cost exploration classes for those interested in figuring out a career or what to study. Classes include [Discover Healthcare](#), [Discover Manufacturing](#), and [Explore College and Careers](#) for immigrants, refugees and non-native English speakers. Learn more about the full range of classes, workshops and programs at [pcc.edu/opportunity-center](http://pcc.edu/opportunity-center).

# Total Office Solutions

Get in touch with our workflow experts today for customized office solutions

## 503-641-2000





14747 NW Greenbrier Pkwy  
Beaverton, OR 97006  
[pacificoffice.com](http://pacificoffice.com)

## Arts & Entertainment

### Sunset High presents HadesTown: Teen Edition

Thursday-Saturday March 6, 7, 8, and Thursday-Friday March 13, 14 at 7 pm, and Saturday March 15 at 2 pm, Sunset High School Theater, 13840 NW Cornell, \$10 students & seniors, \$12 adults.

This full-length Teen Edition of Anais Mitchell's haunting, jazz-inflected folk opera follows Orpheus' mythical quest to overcome Hades and regain the favor of his one true love, Eurydice. [urchase tickets here](#) or at the door.

### Young Artists Competition Recital

Sunday, March 9, 2-5:30 pm, Village Church, 330 SW Murray Blvd., free

This thrilling showcase features up-and-coming young musicians from Washington County who are pushing boundaries and mastering their craft. Twelve Finalists will bring their unique mesmerizing music to the stage, each competing for the opportunity to be one of three soloists performing with the Beaverton Symphony Orchestra in their Season Finale Concerts later in May. The passion and dedication these young artists have for their craft will leave you inspired. Join us for an unforgettable afternoon to celebrate the next generation of talented artists and be prepared to witness a performance like no other!

### Forty & Fabulous: A Chorale Celebration

Saturday-Sunday, March 15-16, 4 pm, Cedar Mill Christ United Methodist Church, 12755 NW Dogwood Street, [tickets available online](#)

Join us for a celebration of forty seasons of music and memories as the [Oregon Chorale](#) performs beloved favorites! Enjoy a special reunion with alumni from across the years, a memorable appearance by Artistic Director Emeritus Bernie Kuehn, and experience the world premiere of a new work by award-winning composer David Walters.

At Forty & Fabulous, enter our raffle for your chance to win tickets to In A Landscape: Classical Music in the Wild. Founded by classical pianist Hunter Noack in 2016, In A Landscape is a concert series that finds its concert halls in National Parks, urban greenspaces, farms, and historical sites—presenting concerts designed to connect the audience with these stunning surroundings. Learn more on the [In A Landscape website](#) and get your tickets to Forty & Fabulous: A Cho-

rale Celebration today!

### March events at the Reser

Various dates and times, 12625 SW Crescent St., free and ticketed

Grand Kyiv ballet performs Sleeping Beauty in May, [order tickets here](#). Ukulele Beginner Class for All Ages; Irish music with Altan; The Glenn Miller Orchestra big band; Samba classes; and much more. [Visit the Events page](#) for details.

### Into the Woods

Friday, April 4-Sunday, April 13, various times, Lovegood Performing Arts Company, 16260 NW Bronson Rd., [purchase tickets here](#)

James Lapine and Stephen Sondheim take everyone's favorite storybook characters and bring them together for a timeless, yet relevant, piece...and a rare modern classic. The Tony Award-winning book and score are both enchanting and touching.

### Village Gallery of Arts

#### ArtChat

Second Sunday March 9, 3-5pm: Show runs March 3- April 6, 1060 NW Saltzman Rd.

March is National Youth Art Month. Come hear our featured artists talk about their art and see the new show. Find the perfect piece of locally created art for your home!



### 2D Featured Artists: Westview High School Students

Earlier this year, Ezra Lacroute, a junior at Westview High School, visited the Gallery and inquired about a Youth Volunteer Program. This sparked the idea of featuring art students from Westview High School as our March Featured Artists. ArtChat and Refreshments at the gallery. Students will host.

3D Art: Jayne Dahl is a jewelry artist, fine artist, and owner of Lucy Anne Smiles Designs. She creates original jewelry by repurposing vintage and unique finds from around the world. Each piece is inspired by her global adventures and the people she encounters, carrying its own unique story.

### "Clay Sunday" Open Studio

First Sunday of each month, 1-3 pm, all ages, free

Come and get your hands dirty! Clay and all supplies provided. Ongoing drop-in ceramics workshop. Instructor available for questions and assistance. No pressure environment for all ages.

### Children's Art Classes

Thursdays in March; 3:45-5:15 pm, ages 7-11

VGA Instructional Team leads featured projects: Paper Mache Sculptures, Flying Origami Art, and more!

### Acrylic Painting 101: Mastering the Basics—Rachel Gering

Thursday, April 3, 10, 17, 24, 10:15 am-12:15 pm, open to beginners

Dive into the vibrant world of acrylic painting in this beginner-friendly, four-session course. This class will guide you through the essentials of acrylic techniques. You'll learn about drying times, blending, layering, and how to make acrylic paints work for your unique style.

[Check the website](#) for late-breaking classes! Our Mission is: "To ignite the joy of learning, creating and appreciating art in our community. We support professional and emerging artists by providing high quality affordable art education to children and adults as well as providing venues for sharing their work." Village Gallery of Arts is a non-profit (501c3) organization, receives no taxpayer money, and is staffed entirely by member volunteers.

### Lois Ditmars, 1931-2024

Lois D. Ditmars, age 93, of Cornelius, Oregon, beloved wife, mother, grandmother, great grandmother and friend, passed away peacefully on October 16, 2024. She was the President of J. Peterkort & Co. that oversees the development of the [family's land](#) around the intersection of Cedar Hills Boulevard and Barnes Road, and also the office buildings west of St. Vincent's Hospital.

From the family obituary: "The youngest daughter of Joe and Bertha Peterkort, Lois lived a life marked by dedication to her family, a passion for real estate development, and a deep appreciation for the natural world. Her love of geology fueled her curiosity and inspired countless journeys around the world, which she shared with her cherished sister.

"Lois was preceded in death by her husband in 1987, and her

*New Business, continued from page 1* [testing at the](#) customer's jobsite.

Turnaround times vary based on the test. Instant urine, EtG (alcohol), and breath alcohol tests provide immediate results, delivered at the time of service or within an hour. Other lab tests typically take two to seven business days, excluding holidays.

They do not accept insurance but are committed to affordability.



"We intentionally keep our lab costs low enough to beat the typical

out-of-pocket insurance expense. However, we do accept FSA and HSA cards as a form of payment at the time of service."

Test results are private. Donors can grant permission to their employer, attorney, physician, or other recipient by completing a release.

For more information or to book an appointment, visit [smartlabsnow.com](#) or call 503-430-5394. Walk-ins are welcome for select services, and online scheduling is available for added convenience.

Sign up to get  
The News in your inbox:  
[cedarmillnews.com/signup](https://cedarmillnews.com/signup)



son in 2011. She is survived by her loving daughter and son-in-law, two grandchildren, and two great-grandchildren, all of whom she adored and took immense pride in.



"A service and reception to celebrate Lois's remarkable life was held on November 12, 2024."



## NAVIGATING PARKINSON'S

### *Resources, Support, and Awareness*

Join us on **Wednesday, March 19th at 12:30 pm** for an informative presentation by Parkinson's Resources of Oregon. This free seminar is a great opportunity to get involved during Parkinson's Awareness Month in April. Don't miss this chance to learn, connect, and find the support you need! RSVP today to reserve your spot.

**Join us for a community tour after the presentation!**  
**Bring this ad for a free meal gift certificate and savor our dining experience!**

### **THE ACKERLY** AT TIMBERLAND

11795 NW Cedar Falls Drive | Portland, OR 97229  
503-822-7819 | [TheAckerlyAtTimberland.com](http://TheAckerlyAtTimberland.com)



LEISURE CARE

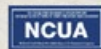
# Relax...



## All the stages, all the dreams...we'll help you fund them.

Join today at [sspfcu.com](http://sspfcu.com)

Sunset Credit Union  
1100 N.W. Murray Blvd., Ste. 200  
Portland, OR 97229 503-643-1335



**BODELITE**  
BODY CONTOURING

## OPEN HOUSE

*March 13, 2025*

March 13th 5:30 - 7:30 PM  
BodElite Body Contouring  
15160 NW Laidlaw Rd #100

Join Us for an Exclusive Open House!

Enjoy light snacks, bubbly, and a night of beauty & wellness! 🍷👉 Discover our amazing treatments & products, meet our experts, and take advantage of exclusive event specials. Raffle prizes and amazing gift bags for first 15 people to RSVP!

Don't miss out—bring a friend and come celebrate with us! 🎉

RSVP today! Call or text 971.448.9155 to RSVP or email [Michelle@bodelite.co](mailto:Michelle@bodelite.co)  
❤️ We can't wait to see you there!



**Michelle - Owner / Master Body Contouring Specialist - BodElite Body Contouring**



**Sujen, APRN, CRNA - Owner / Aesthetic Nurse Injector - Hope Beauty & Aesthetics**



@wolfedental

### Cosmetic, Family & Implant Dentistry

### Accepting New Patients!

Mention this ad & receive a FREE professional take-home teeth whitening kit, at time of your new patient comprehensive exam, cleaning & necessary x-rays.



CONTACT US  
**(503)-751-2735**



[www.wolfedentalcm.com](http://www.wolfedentalcm.com)



11786 NW Cedar Falls Dr  
Suite 200  
Portland, OR 97229