



FREE

Cedar Mill News

Volume 18, Issue 12

December 2020



Like us on Facebook for timely updates

Sign up to get The News online: cedarmillnews.com/signup

Road News

Saltzman Road PAC recommends western alignment

by Vicky Siah, CMN student intern
The fourth and final [Saltzman Road Public Advisory Committee \(PAC\)](#) meeting was held on November 4. The group consensus was to forward a recommendation for the western alignment.

During the public input segment, Jake Krishnan asked the county to assess the feasibility of each align-

substantial spacing between pillars on the western alignment bridge option, she questioned an earlier opinion that the western alignment would be more detrimental to surrounding wildlife. The roadway on the eastern alignment causes habitat fragmentation that may prove more harmful to animals than the noise pollution under the proposed



Preliminary plan of the western alignment presented at the October meeting

ment as “both options seem to be untenable in some way, shape, or form.” Suresh Bala voiced a similar concern—if the county proceeds with the western alignment, the potential time delay in permitting may lead to inconveniences. County Engineer Ben Lively addressed both Bala and Krishnan’s comments, noting that the project requires approval from Clean Water Services, the Department of Fish & Wildlife, and the US Army Corps.

Feasibility became a guideline during the PAC member discussion. Virginia Bruce opened a debate on environmental impacts. Given the

western bridge. PAC members Asif Rahman and Mary Manseau mentioned that an initial discussion on habitats should have taken place when housing was being constructed in that area. Replacing a culvert with a pedestrian bridge, lowering banks, improving creeks, and coordinating roadwork with THPRD may mitigate effects on ecosystems.

Alternative routes from TVF&R and the Sheriff’s Office must be simultaneously factored. Trace Richards from TVF&R weighed in by reinforcing TVF&R’s adaptability to road closures. However, if the

Continued on page 6

BSD News

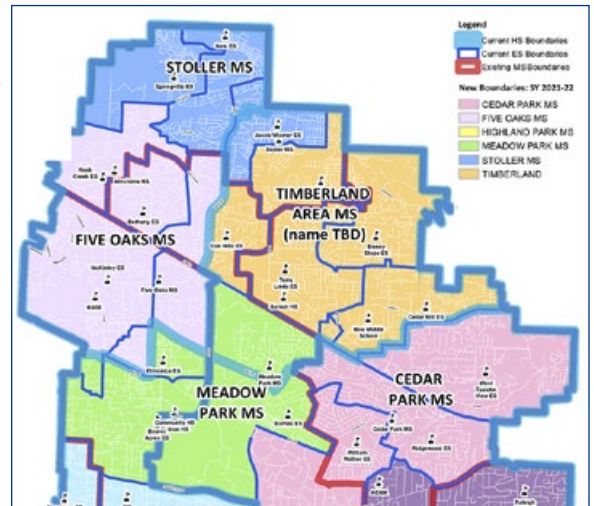
Middle Schools have new attendance boundaries

On November 10, Beaverton School District (BSD) released Superintendent Don Grotting’s decision regarding new middle school boundaries. The primary objectives were to create an attendance boundary for the new middle school located in the Timberland neighborhood and to reduce enrollment at Stoller Middle School

Grotting has accepted the MSBA Advisory Committee’s recommendation to offer a legacy option to students who will be entering 8th grade in the 2021-22 school year to remain at the middle school that they attended during the 2020-21 school year. Any parents/guardians who wish for their students to re-

to approximately 90% of its permanent capacity. After reviewing the recommendations from the [Middle School Boundary Adjustment \(MSBA\) Advisory Committee](#), considering the public testimony provided throughout the process, and consulting organizational stakeholders,

he believes that the new middle school boundary map recommended by the Advisory Committee complies with the objectives issued by the School Board and the factors contained in [Board Policy JC](#).



This map represents the Superintendent’s middle school boundary adjustment decision, which is unchanged from the Advisory Committee’s final recommendation. The full map is available on the BSD site.

main at their former middle schools must complete and submit a Legacy Student form to the district’s Central Office. The Legacy Student form will be available in January 2021.

Continued on page 8

Development News

Biggi proposal raises Thompson Road questions

Neighborhood meeting Thursday, December 17, 6 pm, online (*see below for registration instructions)

Attend a Neighborhood Meeting to learn about a development proposed for a ten-lot townhouse subdivision on Thompson Road.

For many years, it was expected that future development would enable the curve in Thompson Road, just west of Hibbard, to be

straightened out. That segment of road was originally in Multnomah

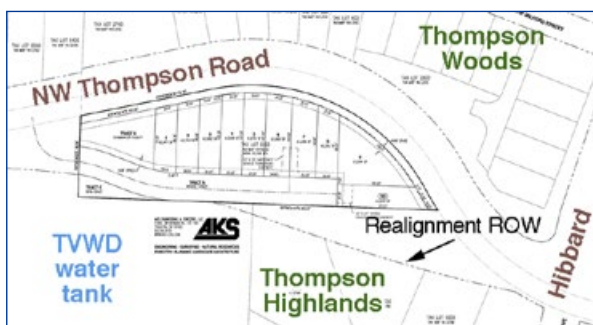
County, but became part of Washington County when the [county line was changed to create Bonny Slope West](#).

The Right-of-Way (ROW) for the Thompson Road straightening was dedicated by the Thompson Highlands subdivision development to the southeast in 1990 and the Tualatin Valley Water District to the west in 2012. This ROW is vis-

ible on the map. In 2015 at Bonny Slope West planning meetings, the county staff told community members concerned about safety that Thompson Road realignment was being pursued, and designated the land around this curve the “Thompson Road Realignment Study Area.”

Thompson is designated as a minor arterial on county plans, which means it needs to be three lanes with curbs and sidewalks, and a total width of 90 feet. It is currently two lanes at this site without bike

Continued on page 7



Cedar Mill Business Roundup

Do you have news or events or know of something that you would like to see covered in the Cedar Mill News? Please write to Virginia Bruce at info@cedarmillnews.com

More small business assistance from Washington County

Application period Tuesday, December 8-Sunday, December 13

This week the Washington County Board of Commissioners accepted the agreement and funds from the state of Oregon for additional grants to support small businesses. We are working quickly to finalize the plan for distributing the additional money, including finalizing the eligibility criteria, but grants will be prioritizing those businesses that were shut because of the freeze as well as non-hotel, hospitality businesses.

Additional grants are available for hotels. Visit the [Washington County Business Recovery page](#) to learn more and apply on Tuesday, December 8.

Village Gallery of Arts

New gallery hours: Thursday, Friday and Saturday, 10 am-4 pm, 1060 NW Saltzman

The Village Gallery of Arts is taking COVID-19 protective measures: masks required, gloves optional, hand sanitizer (all available on site), social distancing observed, and limited visitors at any one time. Please follow directions of the Desk

Worker if you wish to touch any gallery items. We appreciate the extra effort our patrons must make at this time to enjoy the gallery and we thank you for coming!

The Village Gallery of Arts is the grateful recipient of four COVID-19 Relief Awards over the past six months. The first grant in April came from the Federal Government in the form of The Cares Act; grant awards received in July were given by the Oregon Community Foundation and the City of Beaverton Arts Program. In September, we received the welcome word that we will receive funds from the Oregon Cultural Trust for Coronavirus Relief Funding for Cultural Support.

Taken together with substantial contributions from many generous members, the total of these grants will cover the loss to our operat-



Jean Anderson teaches a class on "How to paint hydrangeas"

ing income during this COVID-19 crisis, making it unnecessary to dip into our reserves or our capital expense budget. This has allowed us to pivot to a business model with COVID-19 safety adaptations and provisions in place—with reduced hours, we can open again.

Holiday Show and Sale November 19-December 23

Lots of beautiful, unique hand-made and hand-decorated ornaments, gifts, cards, ceramics, glass work, leather work, soft sculpture, multi-media wall art, and so much more! If you simply can't decide on something for that special someone, we also have Gift Certificates for any amount \$5 or over!

We will restock as items sell, so check back often to see what's new! Please check the [Village Gallery of Arts](#) website for the current schedule.

Classes and Workshops

Registration can now be done online! See the [Village Gallery of Arts website](#) for all our classes and registration details.

Touchmark's outdoor Winter Fest

Thursday, December 17 and Friday, December 18, 4-6 pm, 840 SW Touchmark Way

For two days in December, holiday decorations and lights will transform the retirement community into a festive Winter Wonderland! The public is invited to visit Touchmark's outdoor Winter Fest!

Area neighbors can come to celebrate the season and enjoy a physically distanced, fun outdoor winter festival. Warm yourself with hot cocoa and munch on cookies as you view the many seasonal decorations! Marvel over 10 meticulously crafted, creative gingerbread houses and scenes! Listen carefully, and you may hear residents caroling from the third-floor terrace!

Oh, and be sure children bring their wish lists and letters to Santa so they can be dropped into the North Pole mailbox and sent directly to Santa and his helpers. Santa has confirmed he will be at the Winter Fest, and he's looking forward to seeing everyone before he prepares his sleigh for the big day. Call 503-954-1640 to RSVP!

The Ackerly at Timberland is holding a Festival of Lights

Starting in December, our courtyard will be open for the community to view our beautiful lights in a socially-distant setting. As we approach Christmas Day and New Years' Eve, we will be building our display into a true "Festival of Lights".

A table under the portico will be set up with hot cocoa on Wednesdays from 4-5:30 pm. We plan on having carolers on December 16. No RVSP is required—just come by!

Bethany's Table adds Marketplace

Tuesday-Saturday, 12-8 pm, Bethany Village

Seasons Greetings from Janet, David, and crew! We are in our twelfth year and what a year it's been!

If you haven't been to Bethany's Table recently, well we've made some changes. We have opened a



Pulled pork package—looks yummy!

Marketplace! We have fresh pastas, lasagna, shepherds pie, pizza packs, roasted vegetables, sauces, soups and a variety of products from near and far!

Our motto for this year has changed from "Together at the Table," to "From our Table to Yours." You can [find everything online](#) and we provide delivery (with restrictions). We look forward to seeing you!

Catlin Gabel offers variety of art classes

A variety of online and in-person classes are being offered this winter in the former Arts & Crafts campus buildings. From Journaling to Pottery, [learn more here](#). COVID-19 guidelines will be followed. Please bring your own mask.

Juggle Source now offers Mobile Notary

This is an added service that is priced differently from the extra hands that Juggle Source provides. You can find the MOBILE NOTARY prices on the pricing tab on my website at jugglesourcecell.com.

Would you like to give your loved one the best gift of all; the gift of time? A gift certificate for four hours of service is available directly from the pricing tab on the Juggle Source website as well.

When you don't need a full staff on hand, but when an extra set of hands could make a difference in those crazy busy times, call Juggle Source to be a partner in your busy life!

Skyline Memorial Gardens ornament tree and toy drive

December 1-31, daily 8:30 am- 5 pm, 4101 NW Skyline Blvd.

People who have lost a loved one are invited to come to Skyline

Continued on page 10

The Cedar Mill News © 2020
Published monthly by
Cedar Mill News LLC
3270 NW Kinsley Terrace
Online: cedarmillnews.com

Copy Editor: John Ramey

Managing Editor: Genevieve Coblentz
Editors: Cami Villanueva, Cheryl Miller,
Vicky Siah, Sue Wendel

Paper Distribution: Mark Lewis
Website production: Georgia Stanley
Publisher/Editor: Virginia Bruce
503-803-1813

info@cedarmillnews.com

Opinions expressed in this publication are not necessarily those of its advertisers.

Printing courtesy of
[Pacific Office Automation](#).

Web hosting courtesy of
[Spire Technologies](#).

CPO News

December CPO 1 meeting

Tuesday, December 8, 7-9 pm, [via zoom](#) and simulcast on [CPO 1 Facebook](#)

Following the open mic and community briefings, we'll hear from our [State Representative Maxine Dexter](#). She was appointed last spring to serve the remainder of Rep. Greenlick's term after he passed away, and was elected to the position in November. She'll give us a report on her priorities for the 2021 Legislative Session and take a few questions/ comments from the members.

Then we'll learn about the [Westside Trail](#), which will eventually stretch from the Tualatin River to the Willamette! Peter Swinton, Tualatin Hills Park & Recreation District Planner, will give us a brief overview of the Trail—how it was planned, where it goes, and the status of those segments not yet built. Then he'll update us on the feasibility study currently in progress for a pedestrian bridge that will connect the trail across the Sunset Highway. (See *Park News* for more.)

Finally we'll get an update on the [Highway 217 Auxiliary Lanes Project](#). ODOT has a plan to address long-standing bottlenecks on the highway between Beaverton-Hillsdale Highway and OR 99W caused by too many closely spaced interchanges. Auxiliary lanes are ramp-to-ramp connections that help reduce bottlenecks by giving drivers more space and time to merge safely. This decreases conflicts, improves safety and the flow of traffic, and ultimately allows the existing lanes to work more efficiently.

The project is in the final design phase. Visit an online Open House through December 17 for updates at: www.hwy217.org

CPO1 November Meeting Summary

by *Vicky Siah, CMN student intern*

To begin the November 10 CPO meeting, we heard a report from Tualatin Valley Fire & Rescue. Their firefighters spent the past few months fighting record blazes amidst the COVID-19 pandemic. While maintaining a high response quality in local areas, TVF&R worked fires at the Chehalem Mountain Peak Area—"one of the worst urban interface fires," TVF&R says—the Clackamas/Mt Hood Forest fire, and fires in California. All TVF&R personnel returned safely.

Brenda Schaffer, Deputy Wood, and Lt. Rawlinson from the Washington County Sheriff's Office (WCSO) remind the public to lock property (especially sheds, garages, and cars) and ensure that valuables are safely stored as we approach winter months. Lt. Rawlinson announced that the Bethany office will be shut to public access due to Governor Kate Brown's COVID-19 order; as always, residents are encouraged to report any suspicious activity by calling the non-emergency number 503-629-0111 or via the [Sheriff's Office online reporting system](#). If callers would like an in-person visit from sheriffs or for their call to be returned, please specify these requests to the operator.

Tualatin Hills Park & Recreation District's Brian Yourstone reports that THPRD is limiting programs to adhere to our Governor's guidance. (See *Park News* for more information.) THPRD is partnering with Sunset High School's Black Student Union to complete the Sunset Park [Talking Walls Project](#). The team is also working with the Native American Youth and Family Center on a second set of murals for Springville Elementary.

Fixing Recycling in Oregon

For the main program, Thomas Egleston, Washington County Solid Waste and Recycling Division Manager, shared a presentation on the future of recycling. Oregon can no longer rely on the global recycling model—China has dramatically reduced recycling intake since 2017—and the Recycling Steering Committee (RSC) aims to confront Oregon's recycling issues. The RSC's proposal reflects a vision of reducing waste and using fewer resources.

In ten steps, the RSC calls for truth-in-labeling (no more chasing arrows on non-recyclable stuff!), a statewide collection list, reduced contamination, and accountability. The RSC seeks to expand the Bottle Bill to remove more glass from recycling pathways. The final point in the proposal is an extension of producer responsibility, mandating that producers join a Producer Responsibility Organization (PRO). The PRO would operate on an eco-modulated fee model, where producers pay based on the environmental impact of their products. Egleston says some major manufacturers are already on board with these concepts.

The DEQ is using the RSC

proposal to create a legislative draft before the start of the 2021 legislative session. Their goal is to finish the draft by November 2020, and they are seeking support in Salem from stakeholders. If passed, statewide education will build upon the recycling list.

For a list of recyclables and recycling guidelines, visit washing.toncountyrecycles.com.

CPO Chair Virginia Bruce wrapped up the meeting by providing attendees with some development updates, including the proposed Target store that may occupy the former Bales' Thriftway, and an announcement that Insomnia Coffee will be opening in the Milltown Center.

Ordinance 869 was adopted on October 27. It began as a thorough look at the Washington County's protections of natural resource lands, but an LCDC injunction (against the county) was issued limiting the county's ability to approve development applications, so the scope of the ordinance focused on making only the changes necessary to lift the injunction. More work on natural resource protections is expected to take place in coming years.

For any questions related to CPO1 or future topic suggestions, please email cpoleaders@gmail.com. A simulcast of the meeting can be accessed on the [CPO1 Facebook page](#).

Short-term Rentals Online Open House

[Comment online from December 4-January 8](#)

Do you have experience with a bed-and-breakfast in your neighborhood, or have you thought about creating one? Visit an [online open house](#) to comment on draft requirements for a proposed short-term rental licensing program in urban unincorporated Washington County.

The Short-term Rental Online Open House describes proposed requirements for a licensing program to minimize large parties, noise, trash and other issues that community members have raised with the Washington County Board of Commissioners. The open house includes a survey with about 20 multiple choice and open-ended questions so the public can provide feedback.

Continued next page



Cornell Farms

Christmas Trees

Eight Varieties

2 - 12 Feet Tall

"Marriage Saver" In-Home Setup

Pre-Order Now
CornellFarms.com



Support the
Sunset High
Marching Band
& Auxiliary

Bottle/Can Drive
December event canceled!

Schedule a contact-free porch pickup of your redeemable non-crushed cans & plastic and glass bottles any time by emailing samba@sambanote.org



Dinihanian
CHRISTMAS STORE

Indoor Tree Shopping!

Large selection of
Christmas Trees
Specialty Wreaths
Garlands, Greenery
& Gift Items

OPEN DAILY
10 am-6 pm
November 28-December 20
15005 NW Cornell



Indoor Aquatics Center



Sunset Athletic Club

Cedar Mill's Outstanding, Family-Oriented,
Sports, Fitness and Racquet Club

503-645-3535

Across From Sunset HS • SunsetAC.com



**BETHANY'S
MARKETPLACE**
A NEIGHBORHOOD PLACE TO SHOP

From our table, to yours -
a new way to bring home Bethany's
Table. Thoughtfully crafted meals
and other quality goods. Grab-and-go
convenience.

Hours: 12 - 8PM
Tuesday - Saturday

503-614-0267
Located in Bethany Village!
www.bethanystable.com



Continued from page 3

In response to community concerns, Land Use & Transportation Community Planning staff developed [Short-term Rentals: Issues and Considerations](#), which was released for public comment in February 2020. Most comments supported regulating short-term rentals. As a result, the Washington County Board of Commissioners asked staff to draft short-term rental requirements in support of a licensing program.

Staff will use the data and comments submitted through this open house to develop final requirements to address concerns of both community members and short-term rental operators.

Neighborhood Meetings

Thursday, December 17, 6 pm, [online](#) (see below for registration instructions)

AKS Engineering & Forestry, LLC is holding a virtual neighborhood meeting regarding a proposed 10-lot subdivision to be located on NW Thompson Road east of NW Saltzman Road and west of NW 120th Avenue. (The meeting was previously scheduled for December 2, but the sign posted at the site fell down and wasn't visible, so the meeting was rescheduled.) The property is ±1.31 acres located in the R-9 Zoning District. The project is a 10-lot subdivision to be developed with attached single-family homes.

Go to the [project website](#) and follow the link for registration to attend the meeting. Complete the online registration form and you will receive a confirmation email containing a link to join the Zoom webinar at the scheduled time as well as additional instructions. Please submit any questions in advance to mimid@aks-eng.com. Questions received by 5 pm the evening before the meeting, will be answered in the Q&A portion of the meeting.

For background on this lot and how it affects Thompson Road, see the article on page one.

Leupold & Stevens new building

A Neighborhood Meeting was held on November 25 to discuss a new building proposed by Leupold & Stevens. The property for their proposed warehouse is adjacent to Pioneer Park, and is also next to the BPA powerline easement which will become part of the route for the Westside Trail where it's planned to cross Highway 26 (see Park News

and the CPO 1 December meeting schedule—it's all related!).

The development representative said that many of the employees of Leupold & Stevens, which makes binoculars and other outdoor equipment, would be very supportive both of maintaining an entrance to the park and having the trail adjacent to the building. He also was supportive of dark-sky-friendly lighting for the parking area. We expect to see the development application in the coming months.

Development applications

An application to convert a garage into living space at 200 SW 95th Avenue was denied by the county. The original house was built in 1960 without a permit. While it is considered an approved non-conforming use, the proposed additions would not conform to the county's existing rules for setbacks from property lines.

A preliminary review is underway for a three-parcel partition and access management plan for a lot at 2200 NW 113th Avenue.

Washington County Public Affairs Forum

Mondays, 12 pm-1 pm on Zoom

The Forum provides a place for the interchange of ideas on civic matters. Each week the Forum brings together community leaders, members, and guests who care about what happens in Washington County, the Metro region, and our state. Zoom links can be found at the [Forum's website](#).

Monday, December 7

The United States Supreme Court – what it's been and what it's become. Lewis and Clark Law School Professor James Huffman gives his perspective on what the court's history and how modern politics have affected how the court operates and is perceived.

Monday, December 14

Vision Action Network, a Washington County nonprofit, has helped in the response to wildfires, homelessness, COVID, and other local crises. Director Glenn Montgomery will report on what difficulties residents are facing and what VAN is working on now.

Monday, December 21

Washington County Sheriff Pat Garrett visits the Forum to discuss his office's outlook for 2021 and responses to calls for law enforcement reform.

Monday, December 28

No forum

Amazon Lockers keep your deliveries safe

by MaryBeth Piccirilli

A package is delivered: you are home, but the delivery person did not knock or ring the bell, so you don't realize it is sitting outside your front door. Or worse, you receive a text that your package was delivered, open your front door, and find nothing.



The lockers at the Peterkort Rite-Aid

Unfortunately, this scene plays out in Cedar Mill and surrounding areas every week since so many of us are ordering online these days. With the holidays approaching and the expected number of deliveries increasing, it is only a matter of time until your front door mat sits silently as your package is snatched by a porch pirate.

Front door cameras help identify the thieves, however thieves are adapting to the technology and covering up to avoid being recognized. Sometimes a description of the getaway car helps, but sometimes that car is also stolen. If you frequently order from Amazon, you should consider having your package delivered to an Amazon Hub Locker.

I recently had the opportunity to use an Amazon Hub locker for delivery and it was simple and secure. Instead of clicking on my default address when checking out in Amazon, I clicked "Change" and scrolled down to "Your Pickup Locations." Next to that is the word "Map" in blue. You can choose the location Amazon thinks is near you or you can look at the map for other locations.

Unlike a year ago, when choices were scarce, the Cedar Mill area

has several locker locations from which to choose. There are two at Peterkort Square (Rite Aid and Godfather's Pizza) and one at the AM/PM Extramile on NW Cornell across from the main entrance to Oak Hills. There are currently none in the Bethany area.

Business owners pay nothing to have the lockers installed indoors or outdoors at their location and may enjoy the opportunity of increased foot traffic as people retrieve packages at the secure lockers. Locker banks contain various size lockers and an inset computer with barcode scanner.

Once a package is ready for pickup, you receive an email. You have 48 hours to pick it up. Once at the locker site, bring up the email on your phone. The Amazon email contains the barcode and unique 6-digit code of your delivered package. Use the locker scanner to scan the barcode off your phone. Use the touchscreen to enter your code and select "delivery." A locker door will pop open. Retrieve your item, close the door and you are done. If you have multiple packages, you will choose them one at a time from the touch screen and retrieve the packages in turn.

Amazon lockers can also be utilized for returns if you would rather not stand in line at Kohls. Process your return through [Amazon.com](https://www.amazon.com) and, if your repackaged item is smaller than 18x14x12 inches, you can reserve a locker at an Amazon Hub site to put it in.

Drive-in Caroling at CMBC

Saturday, December 12, 4 pm, 6 pm, or 8 pm, free

Sunday, December 13, 4 pm, 6 pm, free

Come join us for drive-in caroling! That's right, we are going to sing Christmas carols from the safety of our cars in the parking lot of Cedar Mill Bible Church. We will have a live band, Christmas lights, a lit Christmas tree, and an FM radio transmitter to pump the carols straight into your vehicle. Bring your own hot chocolate and decorate your car. [Plan ahead by reserving your date and time slot here.](#) Merry Christmas, and we can't wait see you!

You can help prevent and end youth homelessness. Your gift can be DOUBLED, thanks to a generous challenge grant from the Maybelle Clark Macdonald Fund!!!

giveguide.org/#newavenuesforyouth

NEW AVENUES for Youth **GIVE GUIDE**

Order online at our website for curbside pickup!

Enjoy the finest local and regional craft brews, wines, and ciders available to the Cascadia region.

Check the website for our current selection!

13619 NW Cornell (west end of Safeway mall) **current hours** Mon-Fri 4-8
[CascadiaTaphouse.com](https://www.cascadiataphouse.com) Sat. 2-8
 503-395-4615 Sun. 2-6

SCHOCH DAIRY AND CREAMERY

Chocolate too, and eggnog for the holidays!

Fresh milk daily, 7 am - 9 pm
 24335 NW West Union Rd • 503-647-2638
[schochdairy.com](https://www.schochdairy.com)

John Ramey Massage

503-784-9254
johnramey@teamweb.com

Safe home office... Same great therapy!

OR License #5579

Peninsula INSURANCE
 A DIVISION OF TIMMCO INSURANCE, INC.

Bob Rosson
 12700 NW Cornell Road
 503-644-5333

Safeco Insurance
Member of Liberty Mutual Group

Managed IT Services for Business

IT support should be responsive & affordable!

Reliable Flat Fee Secure

PLUS

Web Hosting and Support
 Virtual Private Servers
 and more

Call or visit our site for more info

SPIRETECH
 503-222-3086
[spiretech.com](https://www.spiretech.com)

SUNSET SCIENCE PARK FEDERAL CREDIT UNION

THERE'S A CREDIT UNION FOR EVERYONE IN WASHINGTON COUNTY

OPEN YOUR EYES TO A CREDIT UNION®
[YOURMONEYFURTHER.COM](https://www.yourmoneyfurther.com)

NCUA

Saltzman, continued from page 1 current road is terminated, TVF&R asks for a turnaround to accommodate for their apparatus.

Bruce Barbarasch, who represents THPRD, illustrated THPRD's position as favoring the eastern alignment. "Maintaining two roads force more water runoff from hard surfaces," he claimed. THPRD says the eastern alignment preserves the possibility of building a local park.

Virginia Bruce mentioned Washington County's 2004 Ordinance 626, which expressed the county's interest in provisioning for a northward extension of Saltzman to Springville Road, which could be useful in later years. The western alignment is clearly compliant, but the eastern alignment would involve a tricky detour on Laidlaw.

Following PAC member comments, discussion facilitator Brandy Steffen from JLA Public Involvement shared the PAC member responses indicating first and second preferences. The three options were the western alignment, eastern alignment, and "no build" (which specifies that the current Saltzman Road alignment will be left unchanged). Six out of eight PAC members voted western alignment as their first choice, and two members designated the western alignment as their second preference. Two members indicated the eastern alignment as their first preference, and four members listed that the eastern alignment would be their second preference. The "no build" option was the second preference of two PAC members.

Since over two-thirds of members voted in favor of the Western alignment, that recommendation will be forwarded to the Washington

County Board of Commissioners.

The added expense of the western alignment may be a factor when the Board considers the issue. The recommendation of the PAC is not binding. Once the issue comes to the Board, we'll let you know and community comments may be helpful.

More information about the Saltzman Road realignment decision-making process and the Board Public Comment Hearing can be found [online here](#).

Comment now on changes planned for Highway 217

[Open House available for comments](#) through December 17 online

The OR 217 Auxiliary Lanes Project will address long-standing bottlenecks on the highway between Beaverton-Hillsdale Highway and OR 99W due to too many closely spaced interchanges. Auxiliary lanes are ramp-to-ramp connections that help reduce bottlenecks by giving drivers more space and time to merge safely. This decreases conflicts, improves safety and the flow of traffic, and ultimately allows the existing lanes to work more efficiently.

We will also address one of the worst bottleneck locations at the Allen Boulevard and Denney Road interchanges by removing two ramps and adding a new frontage road. Other major elements include replacing a bridge structure and



building four sound walls.

We aren't just making improvements to the highway itself. We also need to make the area surrounding OR 217 safer for all users. In partnership with the City of Beaverton and Washington County, we are making targeted improvements to local bicycle and pedestrian routes

Anticipated traffic impacts

We know more about what types of traffic impacts people will encounter during the four-year construction project, starting in late 2021. Construction will happen in phases and the sequencing and detailed schedule will be communicated as the project progresses.

Detour routes will be established in partnership with local jurisdictions. In addition to night-time lane and ramp closures, anticipated traffic impacts over the life of the project include:

- 24/7 single lane closures for up to nine days at a time (this will happen twice; once near Scholls Ferry Road and once near OR 99W)
- and up to two days at a time (this will also happen twice; once near Greenburg Road and once near Denney Road).
- Full closures of one direction of OR 217 for up to five weekends.
- Up to five-month closure of the southbound on/off ramps at Denney Road before the new frontage road is open.
- Up to two-month closure of northbound entrance loop ramp from OR 99W.

- Up to six-month closure of the Hall Boulevard overpass between OR 99W and Pfaffle Street. A bike/pedestrian temporary bridge will be available during the closure as well as a signed detour for drivers.

- Lane closures on local roads adjacent to OR 217.

There are more details about these impacts at the online open house. Learn more about auxiliary lanes, specifics on the project elements, anticipated traffic impacts, and submit your questions or comments to the project team by



[visiting the online open house](#) now through December 17, 2020.

Cornell/Barnes turn lane on county budget

A line item in a Transportation Development Tax amended project list for approval at the December 1 Board of Commissioners meeting seems to indicate that the county is going ahead with the project to add a right turn lane from Cornell eastbound to Barnes southbound.

"Add eastbound right-turn/bus bypass lane on Cornell at Barnes, ADA curbs, modify traffic signal." The listing gives a cost estimate of \$1,500,000. We were unable to find more information, and the project is not on the county schedule.

This project was funded in part by Washington County in an effort to employ/commission individual artists and to encourage community connections. TVC worked with partners within each district to jury the 33 submissions, identify ideal installation sites, and moving forward, to help monitor the artwork from vandalism and maintenance.

Community members throughout the Pacific Northwest are encouraged to safely enjoy each Musical Bench in accordance with state Coronavirus guidelines. Visit tvcreates.org/musical-benches to see progress photos from each artist's studio and to learn more.

CMBA helps bring musical bench to Cedar Mill

Katie Smith is the Community Outreach coordinator for the [Cedar Mill Business Association](#), in addition to being Sales Manager of The Ackerly at Timberland. CMBA was looking for a project to replace the hanging flower baskets (since funding had dwindled), when she learned about [Tualatin Valley Creates](#) (TVC) and got in touch with Raziah Roushan, Executive Director.

The timing was perfect, since TVC had just begun working with four large-scale sculptors to create vibrant and engaging works in its "[Musical Benches Public Art Collec-](#)

[tion](#)." Each new piece is considered functional art in that it both captures audiences imagination through contemporary design and



Sculptor Ben Dye and a THPRD employee installed the bench at Timberland Park.

aesthetic, and it can literally be sat on and played with.

CMBA helped sponsor Ben Dye's "Tubus Musica" at THPRD's Timberland Park. It is a two-sided air-based instrument that is played by tapping paddles (or by cupped hands) which can make up to 12 distinct notes. The artist, THPRD Park Staff, and Roushan were the first to play all the notes in an almost "battle of the bands" -like effort on the day of installation this last October.

Benches have also been installed in Tigard's new Universal Plaza and in downtown Forest Grove.

Thompson Road, continued from page 1 paths or sidewalks on the south side. We believe that the [Thompson Woods subdivision](#) dedicated sufficient ROW for it's half of the three-lane road when it was built, although we've been unable to confirm that yet. It did include curbs and sidewalks along the frontage of the existing Thompson alignment. The realignment was on the table when it was approved in 2016.

Biggi Investments Co. purchased the dome-shaped lot a number of years ago, and had a pre-application meeting with Washington County as early as 2016. As part of these meetings the county's Traffic Impact Statement mentioned inadequate sight distance at this curve, the need for three-lanes for Thompson, and that the county had been planning a realignment of the roadway. It's unclear if the county is going to request the ROW or if the Biggi's are prepared to dedicate it. Land use law and court precedent suggests that land can be taken if the taking is proportional to the development's impact on the public good. However, Washington County has mostly been reluctant to pursue such a course.

Neighbors in Thompson Highlands are concerned about traffic safety with a new development on this curve, since there have been numerous accidents nearby over the years. And they remember being reassured in 2015 that, as Thompson Woods was built out, the county would study Thompson Road, but they don't think that has happened. In addition, the current plan calls for the entrance to be at an angle to Thompson, and left turns into and out of the development will have to cross traffic with inadequate sight distance.

These and other questions will come up during the Neighborhood Meeting, so be sure to register and attend if you live or drive in the area.

Ten lots with attached dwellings

Mimi Doukas represents AKS Engineering and Forestry LLC, and is organizing the meeting. She explained the plans. "There will be ten dwelling units on ten lots. Each home will be attached on one side, but they will be for-sale homes on individual lots, like a two unit townhome. Lots 9-10 are just like the others, but the homes will be rotated 90 degrees. Lot 9 will have more yard space than the other lots.

Each home will have a garage plus parking in the driveway."

*Go to the [project website](#) and follow the link for registration to attend the meeting. Complete the online registration form and you will receive a confirmation email containing a link to join the Zoom webinar at the scheduled time as well as additional instructions.

Please submit any questions in advance to mimid@aks-eng.com. Questions received by 5 pm the evening before the meeting, will be answered in the Q&A portion of the meeting.

*Arterial: A functional class of roadways intended to provide general mobility for travel within the region. Correctly sized Arterials at appropriate intervals allow through trips to remain on the Arterial system thereby discouraging use of Local Streets for cut-through traffic. Arterials link major commercial, residential, industrial and institutional areas. From the 2019 Washington County Transportation System Plan.

Viva Village

Please come participate in Viva Village's December events! For Zoom links, please RSVP by calling 503-746-5082 or email vivavillageevents@gmail.com. More information regarding these events can be found at vivavillageevents.com!

Online Age Café

Fridays, December 4 and 18. 11 am-12 pm, open to the public

Small group conversations exploring topics of interest to older adults.

Online Viva Village Book Club

Tuesday, December 22, 1-2:30 pm, open to the public

Selected books: The Shepherd, The Angel, and Walter the Christmas Miracle Dog by Dave Barry; and A Redbird Christmas by Fannie Flagg.

Online Men's Coffee Break

Monday, December 28, 10-11 am, open to the public

2021 Oregon Legislature Session Joint Town Hall

Tuesday, December 8, 5:30 pm, [via zoom \(Register here\)](#)

Our local elected legislators, State Representatives Maxine Dexter and Ken Helm, and State Senator Elizabeth Steiner-Hayward, will discuss the 2021 Legislative Session in a Joint Town Hall

Japanese Beetle eradication update

In 2016, a number of highly destructive and invasive [insects were discovered in a few locations](#) in Cedar Mill. The Japanese Beetle has devastated agriculture and home gardens in the East and Midwest, and the Oregon Department of Agriculture (ODA) wanted to get ahead of the infestation before the same thing happened here. Plans began for treating the irrigated turf (well-watered lawns) where the beetles prefer to lay their eggs.

By Spring 2017, ODA had determined that a granular larvicide treatment, Acelepryn G[®], was the best option. It sinks into the soil, and when the beetles' eggs hatch in late summer, they eat the larvicide and die. Additionally, ODA instituted a quarantine on yard waste from the area, requiring that all garden waste be taken to one location where it could be treated. Cedar Mill Garden Club had to stop holding its yearly plant sale because some of the plants came from gardens within the affected area.

A broad public information campaign began. Residents within the treatment area were asked to give permission for ODA contractors to treat yards each spring. Trapping has continued from the beginning. (Those green plastic containers that smell like roses attract the beetles. Some are equipped with cameras and transmitters!)

The map changed as trapping showed additional affected areas. However, the total number of beetles dropped each year, showing that the plan was working. Last year, areas with a high density of beetles were also [treated with a foliar \(leaf\) spray](#).

Here's what the ODA says now:

We have officially wrapped up our 2020 season. I want to thank everyone who helped make this turbulent year happen. Overall, 98.5% of you consented to treatment this year. With your help we treated 12,200 residences, which came to roughly 4,325 acres.

This year we trapped 4,490 Japanese beetles in total; 4,218 in the Cedar Mill area. The overall number of beetles trapped in 2020 was down 42% from the previous year. There was a 58% reduction in the number of beetles trapped within our 2019 treatment boundary as a result of the 2019 granular and 2020

foliar treatments. We saw a 67% decrease within the boundaries of the supplementary foliar treatment.

In order to eradicate this pest, we plan to continue our treatment next season. We will continue our aggressive approach in 2021 while we have the upper hand. We are currently planning our 2021 treatment boundary and will share it



Japanese beetles love to chomp on your roses!

once it is finalized.

For more information of the Japanese beetle eradication project please visit our website: japanese-beetlepx.info

ODA's Ashley Toland says that in addition to permitting treatment on your property, the two most important things to remember are to avoid giving plants to anyone, either in or out of the affected area; and to make sure that all your yard waste is taken to an approved dump site. Several additional "satellite" areas of infestation were detected this year and were very likely the result of these two practices.

Inside WashCo Radio

On the radio KBOO 90.7FM, Wednesday, 9 am (except 12/16), and KUIK 1360AM, Friday, 1:30pm

Each program is released on Monday on our site, and to our subscribers. All programs are available through podcast subscription, or direct on the website. For more information, visit insidewashco.org. December 7, Battling Racism, Part 2 December 14, Local Journalists (encore episode) December 21, Local Philanthropists (encore episode) December 28, Sunrise Beaverton

Our producer will be retiring at year-end to pursue other projects. We hope to find someone who can record and edit the show as well as manage the podcast service to our subscribers.

Inside Washington County will be producing programs weekly, as we have been for the last eighteen months, through the last week of 2020. We will be on hiatus after that. We hope to return, but may not be able to. Great producers who are willing and able to volunteer are hard to find.

BSD News, continued from page 1

Superintendent Grotting has not accepted the MSBA Advisory Committee's recommendation to amend [Administrative Rule for Policy JEA](#) to allow siblings of 8th grade legacy students in the 2021-22 school year to attend the same middle school as their 8th grade siblings as administrative transfer students.

In addition, Superintendent Grotting has approved two program changes that impact middle school students: The Rachel Carson School of Environmental Science will be relocated from Five Oaks Middle School to Cedar Park Middle School. The SUMMA program will be expanded to the Timberland-area middle school, in addition to the programs that already exist at Meadow Park, Stoller, and Whitford Middle Schools.

For the full report including projected enrollment numbers, please visit the [Middle School Boundary Adjustment](#) webpage.

The School Board reviewed Superintendent Grotting's decision at its November 30 meeting and will vote on the Middle School Boundary Adjustment at its December 14 meeting.

Many local parents are dismayed that the boundary for Stoller is right

across the street from the school, which will mean that students living there will have to be bussed to the new MS.

BSD offers child care subsidies

Washington County has secured a grant through the federal CARES Act to provide child care subsidies to parents/guardians. The Beaverton School District will be distributing approximately \$2.4 million to families who are eligible and apply for these subsidies. In other words, if you pay for child care, you could be eligible to receive money to help cover some or all of your out-of-pocket expenses. [Learn more about eligibility here](#), but don't wait, the program will end when all the funds are distributed.

Unaccompanied Students Need Your Help

Unaccompanied youth are young people who are not in the consistent presence of a parent or guardian. During the 2019-20 school year, there were 3,700 unaccompanied students in Oregon. 331 were in the Beaverton area.

These students need our help, es-

pecially during this pandemic. They not only need a stable place to live, but they also need a stable place to connect remotely to school. [Second Home](#) provides long-term housing for unaccompanied students so that they can focus on high school, graduate and pursue their goals and dreams. Second Home is currently recruiting volunteer home providers to meet the needs of these students. Could you provide housing for a local student? If you or someone you know is interested in hosting a student this year, [learn more here](#) and fill out the application. For more information or if you have questions, email Jenny Pratt Hale, Second Home program director: jpratt@emoregon.org.

Long Range Facilities Planning

A Focus Group that includes community members, community advocates, and public agency partners was assembled to work on an update to the district's [Long Range Facilities Plan](#) (LRFP). BSD has completed a new population forecast with Portland State University and has completed a comprehensive Facilities Conditions Assessment (FCA) of every

District-owned building. Each of these factors will be essential components of the Long Range Facilities Plan.

The first meeting was held in November. A video of that meeting is available on [YouTube here](#). The next meeting is on December 15. Meetings are not livestreamed, but the video will be available afterward.

Naming the new Middle School

[Comment form open through January 4, 2021](#)

The building has been used as a "swing school," housing students from schools that were being remodeled or reconstructed. In September 2021, the new middle school in the Timberland neighborhood will open as a permanent Middle School. The School Board will choose the final name based on community suggestions. Parents, students, and community members are invited to submit name suggestions to the School Board for its consideration. Preference will be given to names associated with the community. In general, the School Board likes to choose names that either have a geographic or historic connection to the neighborhood.

ACKERLY END OF THE YEAR MOVE-IN SPECIAL

\$500 off on select one-bedroom apartments.

Sign by December 31st and we'll also lock your rent rate for two years!



THE ACKERLY AT TIMBERLAND

11795 NW Cedar Falls Drive • Portland
(503) 462-1181 • TheAckerlyAtTimberland.com

THE ACKERLY AT SHERWOOD

16872 SW Edy Road • Sherwood
(503) 308-4076 • TheAckerlyAtSherwood.com



Park News

Most THPRD facilities will remain closed

In response to Governor Brown's announcement last week regarding the new matrix for COVID-19 risk assessment within counties, THPRD will continue its closure of facilities to the public, with the exception of registered participants in child care and preschool programs.

To ensure THPRD's compliance with the statewide order, the following facilities will continue to remain closed until Washington County enters a new risk level: Babette Horenstein Tennis Center, Cedar Hills Recreation Center, Conestoga Recreation & Aquatic Center, Tualatin Hills Aquatic Center, Tualatin Hills Nature Center, and Tualatin Hills Athletic Center.

Limited Activities Allowed to Continue

THPRD child care and pre-schools will remain open. THPRD will follow all state guidelines in place for childcare operators during the pandemic. Families are encouraged to call their centers with any questions.

The temporary homeless shelter at the Elsie Stuhr Center will remain operational. Meals on Wheels will still operate food delivery services, but will not serve meals inside the Elsie Stuhr Center building.

THPRD mobile recreation programs will continue, and will focus primarily on handing out activity kits in conjunction with Beaverton School District free food box distribution sites. THPRD outdoor volunteer opportunities, such as our community garden clean-up events, will continue as scheduled.

Virtual Recreation Opportunities

THPRD's Virtual Rec Center is offering FREE online fitness classes during the closure. [Live class information can be found on our website](#) or by emailing Jen Smirl at jsmirl@thprd.org. Through these offerings, community members now have the chance to interact with our talented instructors through Microsoft Teams in live classes such as yoga and tai chi.

Outdoor Spaces Remain OPEN

THPRD parks, dog parks, playgrounds, fields, trails, and natural areas remain open. All visitors

must comply with the Governor's order for physical distancing and face coverings. Please be vigilant and wear masks, maintain extra space and physical distancing from others, and move to the edge of the path for passersby.

The best source for [updated information during the pandemic is our website](#).

Westside Trail Bridge

by Vicky Siah and Virginia Bruce

The paved Westside Trail is currently under development by THPRD and, when completed, is set to span 25 miles from the Willamette to the Tualatin River. Upon completion, the Westside Trail will connect many of the Tualatin Valley's parks, include scenic opportunities, and provide the community with new avenues for recreation and travel. THPRD describes the Westside Trail as "an important alternative transport corridor," for bikers and pedestrians.

One element in THPRD's efforts to create a functional and cohesive pathway involves bridging Highway 26 between SW Greenbrier Parkway and NW Cornell Road. This was chosen as the "logical location," allowing for flow within users' travel plans and routes. THPRD intends to complete the Southern portion of the Westside Trail and the Westside Trail bridge simultaneously.

A community meeting was held October 20 to present information and get feedback. The bridge project is in the beginning stages of what is tentatively a five-year project. The current phase of the project seeks to study the practicality of constructing the bridge, including identifying any barriers to bridge development, identifying the bridge size, type and location, establishing a construction budget, and engaging with community members throughout the process.

To gain a better understanding of the impact, THPRD analyzed existing travel behavior in the area by focusing on socioeconomic differences and modes of transport. Using location-based services (LBS) data from a company named StreetLight, THPRD identified the origins and destinations of transport, travel time, and the average daily trips of commuters. They analyzed the data by the time of day and the days of the week; and discovered that people traveling in the area

Continued on page 11

Professional Interior Design using *e-design*—we create realistic 3D images of your space, and develop a plan with layouts, color palettes and product suggestions that reflect your taste and lifestyle.

Plans starting at \$89!
Contact us for more information.

Lynn Crosby Harland, ASID, NCIDQ
Professional Interior Designer
info@CoastandCountryDesigns.com




858.354.5272
Serving Portland and San Diego
CoastandCountryDesigns.com



BETHANY

FAMILY PET CLINIC

503.828.9178

BethanyFamilyPetClinic.com
15166 NW Central Drive Portland, OR 97229
OPEN 7 DAYS A WEEK





Sunshine Pantry

No child should go to bed hungry!

We are the food bank for Beaverton, Cedar Mill, and Washington County!

Families in a struggle have increased...

Please go to sunshinepantry.org to find out how you can help!



Online ordering now available

Curbside delivery...
visit our website to learn more
westernoregondispensary.com

Hours
Mon-Sat 10 am-9 pm
Sun 10 am-8 pm
760 NW Dale

WESTERN OREGON DISPENSARY™



Washington County, Oregon

WOOD STOVE EXCHANGE

Let's clear the air.

www.WoodStoveExchange.com 503-846-4425

JUGGLE
-Source-

A Partner in Your Busy Life

**CALL TO PURCHASE
A GIFT CERTIFICATE!**

**WRAP THIS UP!
the
GIFT OF TIME**

**jugglesourcellc.com
503-313-3921**

*Business News, continued
from page 2*

Memorial Gardens and place a memorial ornament on our holiday tree in their honor. Or, if preferred, they may call our office and we will place an ornament with a tag that includes their own personalized message.

Also, during the holidays the staff at Skyline Memorial Gardens collects toys to donate to Doernbecher Children's Hospital. Please consider bringing a toy donation to place under our Holiday Tree.

**Sunset Credit Union
teams up with Family
Promise**

Through December 18, **Sunset Credit Union**, 1100 NW Murray Blvd.

Help make the holidays better for those in need. One simple donation can make all the difference. 2020 has been quite the year. For some people living in Washington County, it's been even tougher, which is why Sunset Credit Union is teaming up with Family Promise of Beaverton to try and brighten the



holiday season and support those less fortunate.

"We've worked with Family Promise before," said Sunset Credit Union CEO Rhonda Baggarley, "and because Family Promise helps people of all ages, we've found that gift cards from places like Target, Fred Meyer, or just Visa Gift cards are the best gifts to give them."

If you'd like to help Sunset Credit Union support Fam-

ily Promise for residents of Washington County, you can drop off your gift card donation anytime in the Night Drop drawer, just to the left of the entry vestibule. You can also make cash donations directly to [Family Promise](#) by visiting their website.

Sunset Credit Union is open to anyone who lives, works, worships, or attends school in Washington County. To learn more, visit the website at [sppfcu.com](#), or contact them at 503-643-1335.

**Drop Toy Drive
donations here!**

Through December 10, Lindsay Freed Brown & Randall N. Freed, DMD, 12289 NW Cornell Rd.

We are excited to announce the kick-off of the annual KGW8 Great Toy Drive. Join us in spreading joy to kids and families this season with a toy donation they will love.

Between today and December

10, we are collecting new, unwrapped toys at our office. If you are passing by, or coming to see us for your scheduled appointment, please consider bringing a new toy with you to donate. When we can't be together, let's work together, to make a difference and brighten the smile of a child this Holiday season.

For more information, head to [kgwtoy.com](#)

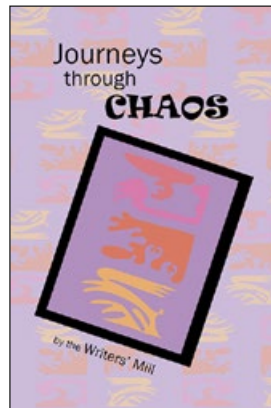


Writer's Mill

Sunday, December 20, 1-3 pm, via Zoom

This end-of-year meeting is our time to catch up on literary achievements from 2020, and to think about goals for the New Year, 2021. Meeting at the library instead of on Zoom might be one post-Covid goal!

And... DRUMROLL... releasing our anthology, Journeys through



Chaos, might be our proudest achievement of the year. Find our book on Amazon and then join us, make your plans to write, and maybe write your plans. Contact the library for more details.

**Oak Hills Elementary
Book Fair**

Online Book Fair open until Friday, December 11 at midnight

Please support Oak Hills Elementary School's Online Scholastic Book Fair! Over 6,000 products! Wonderful books to add to your home collection, give as gifts or donate. Every purchase benefits our school. All books are shipped directly. [Shop early](#) if you are shopping for holiday gifts. Thank you for your support!

Sign up to get
The News in your inbox:
[cedarmillnews.com/signup](#)

CCB #9252

NOYES
DEVELOPMENT CO.
Presents
**CREEKVIEW
RIDGE**

65 New Homes
Located at 120th &
NW Laidlaw Road

Carefully Crafted.
Meticulously Finished.
Designed & Constructed for Life.
[noyesdevelopment.com](#)

COMPUTER HELP?
CALL THE EXPERTS!

503-848-9191

Locally Owned and Operated
Since 1995 • Best Service at Best Price!

[www.eucomputers.net](#)

Serving Washington County & Downtown Portland

44

Specializing in:
 - Spyware/Adware/Virus Removal
 - Hardware & Software Troubleshooting
 - Affordable Backup & Recovery Solutions
 - Specializing in Server & Laptop Repair
 - We Service Business & Home
 - On-Site - Day, Evening and Weekends

Offer: \$22 Off First Appointment

CBD **Helpful for:**

MEDICINE FOR LIFE

- sleep
- pain
- anxiety
- pets and more

Safe, effective, 3rd-party tested
Hemp-based CBD

760 NW Dale (enter from parking lot)
Hours: M-Sat 9:30-7 • Sunday 10-6

MENTAL HEALTH MATTERS

Need to talk?
503-291-9111
24/7 Washington County Help Line

Park News, continued from page 9 tend to be below the country's average income level. A high fraction of motor trips originated from a distance of under three miles.

So in addition to helping create a long recreational trail, the bridge would enable people to reach work, school, and other destinations by foot or on a bike. Sunset High and the Sunset Swim Center, and the employment on both sides of the highway would be accessible without a car. People in the Waterhouse neighborhood and around Pioneer Park could use it to access industrial jobs along Science Park Drive. Nearby employers, including Columbia Sportswear, Leupold & Stevens, and Pacific Office Automation are situated on both sides of Highway 26.

The area surrounding Highway 26 and the proposed bridge location includes a protected wetland, a Bonneville Power Administration (BPA) powerline, and changes in grades from north to south. Impacts to the stream (a tributary of Willow Creek that flows through a pipe under Highway 26) must be minimized. The highway itself is a major consideration for the project.

Ecological studies have shown that there are no endangered species where construction is planned. The primary flora that inhabit the area are invasive weeds, and despite the tributary that runs to Willow Creek, fish passage is considered to be fully blocked by Highway 26. Archaeological surveys have revealed zero historic artifacts, with archaeologists stating that no further study is required. Having completed the preliminary checks, the current planning stage will continue until September 2021. Allowing for coordination with ODOT, BPA, and the Environmental Protection Agency, and permitting with Washington County and Clean Water Services, development will likely not occur until 2023. THPRD suggests that construction will take place over one construction season (a period of one year).

Community member Kevin O'Donnell added to the Westside Trail bridge dialogue in a comment to THPRD and the Cedar Mill News—he proposes that the bridge be viewed as an art piece in addition to a functional structure, similar to what was done in Portland with the Barbara Walker Crossing over Burnside. This may bring tourism and advertising value to the trail. In addition to bridge

aesthetics, O'Donnell raises the possibility of a "win-win solution" between THPRD and the large area employers, and funding from arts organizations.

Through the summer of 2021, THPRD is seeking public involvement for this bridge-building project. More information can be found on the [district website](#), and updates will be added as the project unfolds. A recording of the [October 20 virtual meeting is posted on YouTube](#).

Naming the "park" at Cedar Grove

THPRD is planning to name the splash pad they are developing at the new Cedar Grove housing development at Cornell & Murray "Reflections Plaza." The district aspires to name parks and trails after the people, cultures, and natural features of our region. Names should welcome all people and inspire us. These new names were chosen through an inclusive engagement effort to honor the diverse experiences and identities of our community. [Take the survey](#) here by Sunday, December 13 to share your opinion.

ACMA Fundraiser @ Panda Express

Friday, December 11, 10:30 am to 9:30 pm, Panda Express at Peterkort Square

Arts & Communication Magnet Academy (ACMA) is having a family night fundraiser. Panda Express will donate 20% of qualifying sales to ACMA. Qualifying sales include all online and in person sales using the code 319307 or a copy of the flyer, digital or physical copies. A copy of the flyer can be found at [acmpto.com](#). Orders through Doordash, Grubhub, Postmates or similar delivery services do not qualify for the fundraiser.

<http://acmpto.com>

ACMA is a Beaverton School District option school serving students grade 6-12. The school has a focus on a variety of art programs in addition to the core middle and high school curriculum. Arts include theatre, music (jazz and orchestra), choir, dance, film, photography, ceramics, sculpture, drawing and paint, written word and so much more. The fundraiser will support the arts programs including programs open to the public. A [calendar can be found on our website](#).

Thanks for a great season!
 Second Edition is now closed for the winter, but we'll be back accepting donations and holding Sidewalk Sales in early spring.



Watch this space or our Instagram @secondeditionresale for updates.
Stay safe, stay well.

2nd edition resale
 1050 NW Saltzman Road
 Sales benefit Cedar Mill & Bethany Libraries

the Madhatter
 Custom Sewing
 Alterations
 Upholstery
 Mending



We have moved!
 Come see us at:
 13341 NW Springville Lane, 97229
 Just a short drive in the country from Bethany & Cedar Mill
 Like us on Facebook: Mad Hatter GHQ
503-643-3772
anniehorse@comcast.net

Read The News online:
cedarmillnews.com

FREE Senior Home Placement
 Call us first!
 We will compare, tour, and make recommendations based on health needs, lifestyle, location preference, and budget.
Our services are FREE!



We are open and available to assist you; give us a call today!

Living Well
 Bess Lindahl • 971-330-4743
LivingWellSenior.com

Dean H. Shade Attorney at Law
 503-644-5539
 13765 NW Cornell
dshadelaw@gmail.com

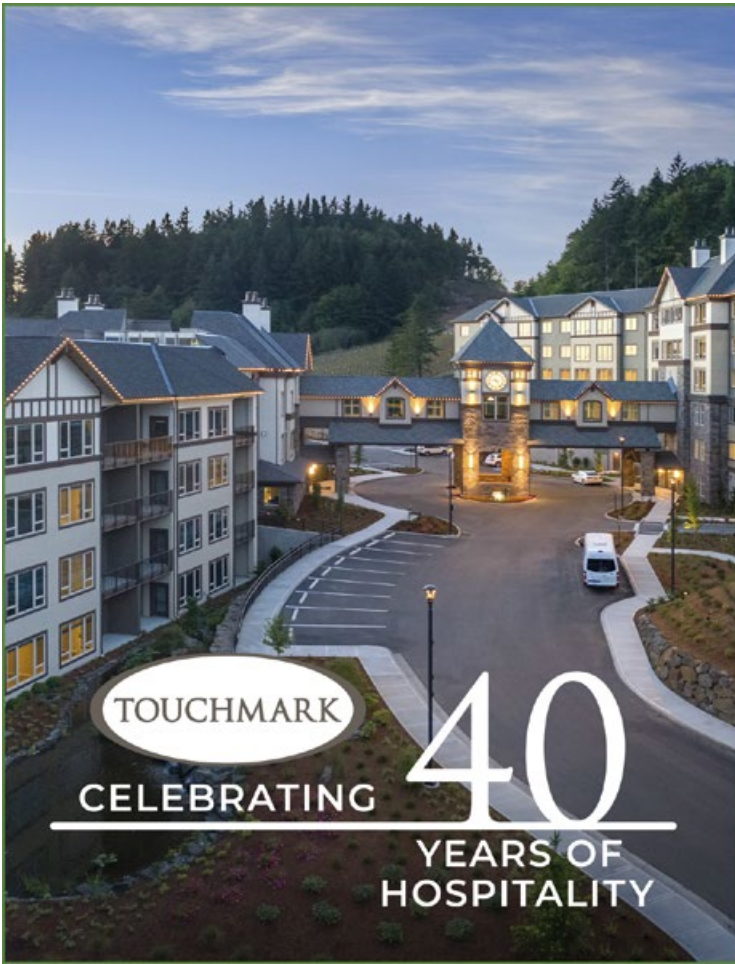
Total Office Solutions

Get in touch with our workflow experts today for customized office solutions
503-641-2000



14747 NW Greenbrier Pkwy
 Beaverton, OR 97006
pacificoffice.com

PACIFIC OFFICE AUTOMATION
 Managed IT Services
 — PROBLEM SOLVED —



TOUCHMARK
 CELEBRATING **40**
 YEARS OF
 HOSPITALITY

THE {FULL} LIFE: 40 YEARS OF FAMILY VALUES

When Touchmark Founder and Chairman Werner G. Nistler, Jr. was caring for his aging parents, he wished he could find a place where they would be valued as individuals with unique backgrounds, needs, and goals. Not finding such a place, he made it his life's mission to create that for others.

Today, Touchmark's core values—**excellence, teamwork, hospitality, integrity, and compassion**—are the building blocks Touchmark uses to reach its ultimate mission: *To enrich people's lives.*

It's time to make a move and enjoy your retirement. Call us today to get started.

TOUCHMARK IN THE WEST HILLS
 FULL-SERVICE RETIREMENT COMMUNITY
 503-946-5427 · TOUCHMARKPORTLAND.COM

2024158 © Touchmark, LLC, all rights reserved



CLEARLY BETTER WITHOUT GLASSES
RELEASE YOUR EYES
 BY
LASIK

 **NELSI, INC.** | (503) 747-5044 • nweyelaser.com
 Northwest Eye Laser & Surgery Institute | 11786 SW Barnes Rd #270 | Portland, OR 97225



Dr. Mehrdad Malihi