



FREE

Cedar Mill News

Volume 19, Issue 12

December 2021



Like us on Facebook for timely updates

Sign up to get The News online: cedarmillnews.com/signup

Treekeepers Tree of the month

Douglas firs: more than Christmas trees!

by Susan Mates

Care to bet on the types of trees Cedar Millers are strapping to the roofs of their cars this holiday season? Chances are pretty good that they're Douglas firs, the most popular for Christmas trees in the United States since the 1920s. They are beloved for their soft needles and sweet scent. But you don't have to restrict your appreciation for Douglas firs to the holiday season.



Douglas fir (*Pseudotsuga menziesii*) is Oregon's iconic tree, although it is not a true fir (thus the "pseudo" in its name). In fact, it's our state tree. Botanist-explorer David Douglas—this tree's namesake—described it as "one of the most striking and truly graceful objects in nature." Douglas firs can grow to be 300 feet tall with diameters of more

Continued on page 9

Road News

Barnes/CHB intersection improvements

We've all been suffering through the extensive roadwork at Barnes and Cedar Hills Boulevard (CHB). Why is it happening, and what will we have at the end of the process?

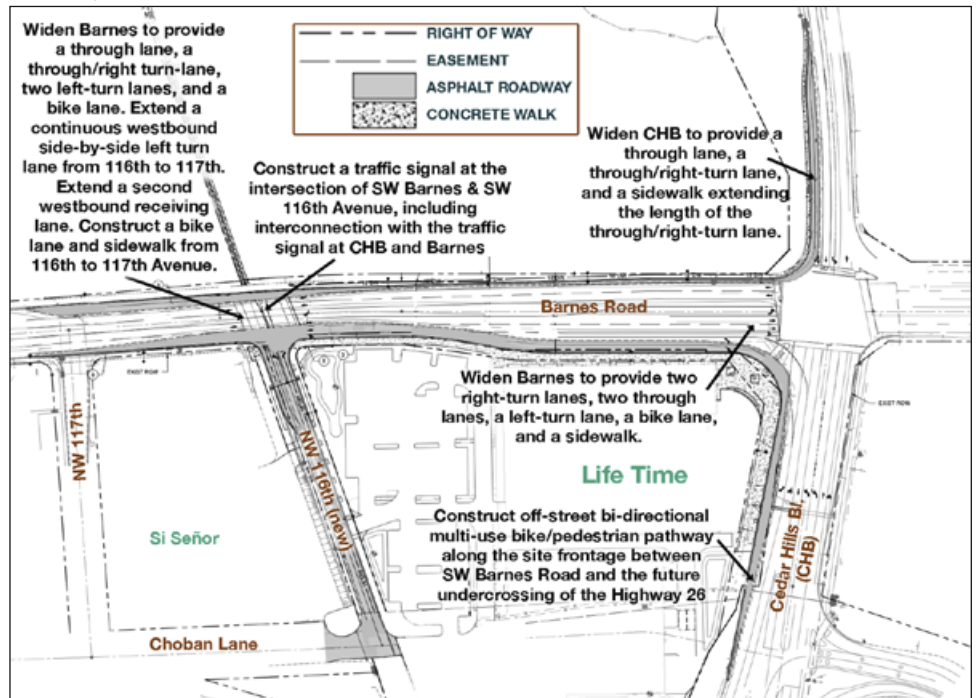
[Life Time Beaverton](#) is under construction, and is expected to open for business sometime in 2023. It includes a large fitness facility with indoor and outdoor pools, exercise, sports, childcare, food service, spa, and more. The development also includes [Life Time Work Beaverton](#), a co-working space with tech, social, and lifestyle amenities. Subscriptions include full access to the fitness and recreation facilities.

The development application was approved by Beaverton in 2019, but the pandemic slowed the start

of work. [Construction began in earnest](#) in summer this year. Beaverton required extensive road improvements, including road widening, additional travel and turn lanes, bike lanes, and sidewalks to accommodate increased traffic that the development will generate. Road improvement requirements start on

the details, view the documents under the heading "Decision." (Scroll down the page to Lifetime Fitness.)

Road jurisdictions are complicated in this area. We asked Beaverton Current Planning Manager Jana Fox for some guidance. She explained that ODOT owns CHB including the on-and-offramps and the portion under the freeway.



This map was edited from a plan included in the development application. It is only intended to show the road, sidewalk, and bike lane locations. Some details may not be accurate but we hope it helps us have a better idea of what to expect when the dust settles.

[page 10 of this document](#), which is part of the packet of materials available on the [Beaverton development website](#). If you want to delve into

Washington County has jurisdiction north and south of the freeway as well as over all of SW Barnes Road. Choban Lane and the

Continued on page 6

CMN news

Are you getting our emails?

It has come to my attention that some people who are on our mailing lists have not been seeing our messages. Apparently some corporate or agency mail portals are marking them as spam or junk, even though you signed up to get them. This includes the monthly publication announcement and the reminder emails I send to advertisers and content providers.

If you haven't seen emails that

you would expect, first check that "info@cedarmillnews.com" is on your list of approved senders. Check your spam folder in case they're blocked up there. If your email is managed by an IT department, you might check with them. You can always try signing up again, at cedarmillnews.com/signup.

If you are involved with an organization that has news or events to share with our readers and haven't

signed up, feel free to do so now! You only get one reminder, around mid-month, and a follow-up just before the deadline. [Guidelines for submissions are here](#). When you sign up, be sure to select the "Community/Business news provider" option in the drop-down menu or you won't get the reminders.

As always, we welcome story ideas and tips from our readers! [Email is best](#), or post in the [Cedar Mill News Group](#) on Facebook.

Cedar Mill Business Roundup

Do you have news or events or know of something that you would like to see covered in the Cedar Mill News? Please write to Virginia Bruce at info@cedarmillnews.com

12 Kegs of Christmas is BACK at Cascadia Taphouse

December 8-19

We'll release four seasonal stouts, porters, and winter warmer style beers every four days for your enjoyment. Collect all 12 beers to be entered into the Super Ultimate Grand Cascadia Taphouse 12 Kegs of Christmas Sweepstakes!

You might win CTH branded 64-ounce GrowlerWerks uKeg



and fill up; One-off CTH 12 Keg of Christmas Shirt; and your choice of CTH merch. Additional winners will be selected to receive 12 Kegs of Christmas shirt, Free Flight at Threshold Brewing and Blending, CTH merch, growler fill ups, and brewery merch.

Here's the rub.... each beer will only be on tap for four days. Miss a beer and miss your shot at the Cascadia Taphouse. 12.K.C Sweepstakes. Make every day count. Entry and Collection is simple: 1) Pick up a 12 Kegs of Christmas stamp book (to be stored at CTH) for \$1; 2) Purchase at least five ounces from the

The Cedar Mill News © 2021

Published monthly by

Cedar Mill News LLC

3270 NW Kinsley Terrace

Online: cedarmillnews.com

Copy Editor: John Ramey

Managing Editor: Vicky Siah

Editors: Victoria Jimenez, Beatrice Kahn, Vicky Siah, Sue Wendel

Paper Distribution: Mark Lewis

Website production: Georgia Stanley

Publisher/Editor: Virginia Bruce

503-803-1813

info@cedarmillnews.com

Opinions expressed in this publication are not necessarily those of its advertisers.

Printing courtesy of Pacific Office Automation.

Web hosting courtesy of Spire Technologies.

Christmas keg; 3) Untappd Check In Each Craft at Cascadia Taphouse.

And don't forget to join us on the third Wednesday of every month to support our local "Planties" Rooted Heart pop up sales event.

[Visit us on Facebook](#) for more information and updates.

Village Gallery News

Holiday Show: Expanded Hours!

Through December 24, Wednesdays-Saturdays, 10 am-4 pm, Sundays noon-3pm.

Look for our ad in this Cedar Mill News!

This show offers a wonderful variety of fine art, crafts, jewelry, cards, gifts, ornaments and more, all by local artists. Many affordable options throughout the gallery for holiday gifts. If you simply can't decide which work of art to give that special someone, give a Gift Certificate, and let them choose!

Holiday Show Reception Sunday, December 12, 1-3pm

Come meet artists, browse the new show, shop for the holidays, or just enjoy the festive ambiance. Masks required.

Winter Show

16157 NW Cornell Rd

Our members also have art on display in the community November through December at Bethany Frame Central—come take a look! Stay tuned for more VGA artists showing at other community venues in 2022.

Classes and Workshops

Online registration for all classes. Please see the [Village Gallery of Arts website](#) for details and more class information. In-person classes are held at 1060 NW Saltzman, and masks are required for all in-person classes.

Adult Classes and Workshops

Emily Stevens: Painting on Fabric/Making Gifts for the Holidays Tuesday, December 7, 10 am-3 pm. Maximum of eight students per class. In-person, one-session class.

Explore painting on fabric that may be used for clothing, greeting cards, tote bags, aprons, tee shirts, or wall hangings. Learn the basic techniques using fabric paints and media. Go home with painted

textile art samples that may be used for gift giving or other uses. All supplies will be provided by the instructor; bring designs or images you want to paint and clothing or fabric you want to paint on.

Jean Anderson: Watercolor Snow Globes

Wednesday, December 15, 10am-noon. Maximum of eight students per class, via Zoom.

This makes for one last quick Christmas gift or just an opportunity to play with your brushes. We

will do a snowman like the ones shown, learn how to make an object appear round, and a little bit of composition. I will provide different subjects and ideas to use for your own snow globes. This class is always a favorite

with students. I teach techniques that allow you to paint more than just one painting. If you have some basic knowledge of watercolor technique, you should be able to follow and produce a masterpiece.

I use two cameras, giving students a good view of my painting area—another camera allows me to periodically check on what you are doing, ensuring that everyone is understanding my instruction. See the Village Gallery of Arts website for supply details.

Aging well

December 6-10, noon-1 pm, free, online

Leisure Care ([The Ackerly in Cedar Mill](#)) joins RevealEleven for [The Aging Well Series](#), a week-long series of events on aging. Join us to learn how to age into the later years with grace, health, and the support you need. Our speakers will provide information and tips to move into the next chapter of your life with gusto.

12/6: Aging Parents: What You Need to Know

12/7: Living Well: Mind, Body, Spirit

12/8: Audacious Living at All Ages

12/9: Financial Wisdom: Understanding the Importance of Financial and Estate Planning

12/10: Growing Your Career in Senior Living

Do you want to become an Energy Healer?

Starting in December, locally owned [Arise](#), a counseling, energetics, and healing arts training business, is offering small, self-paced classes on Zoom in a personalized format. Reiki certifications for hands-on and distance healing is included. For more information, visit the Arise website, [email Lorelynn Cardo](#) (owner and trainer), or text 503-810-8855.

Help make the holidays better for those in need

Sunset Credit Union is teaming up with Family Promise of Beaverton to help brighten the holiday season and support those less fortunate. We've found that gift cards from Target, Fred Meyer, or Visa Gift cards are best.

If you'd like to help Sunset Credit Union support Family Promise of Washington County, you can drop off your gift card donation any time before December 17 to Sunset Credit Union located at 1100 NW Murray Blvd #100 (across from the Safeway Shopping Center). If you have any questions, please contact 503-643-1335.

Canine influenza outbreak in southern California

Bethany Family Pet Clinic let its customers know that an outbreak of H3N2 canine influenza virus (CIV) has been diagnosed in dogs in southern California. CIV is a highly contagious respiratory infection that is transmitted through a cough or sneeze, physical contact, or contact with a contaminated item like a chew toy.

Symptoms include: coughing, loss of appetite, fever, sneezing, or discharge from the eyes or nose. Dogs are at an increased risk if they are in close contact with potentially infected dogs in kennels, groomers, and day care facilities.

A two-dose vaccine is available, and [Bethany Family Pet Clinic](#) vaccinates for two strains of CIV. Call your veterinarian if your dog develops a cough. Contact us for appointments at 503-614-9061.

CPO 1 News

December meeting

Tuesday, December 14, 7-9 pm, [via zoom](#)

Why our water rates must go up

The Tualatin Valley Water District (TVWD) and Clean Water Services (CWS) will jointly present their inter-related services.

After a short history of the water district, TVWD will summarize the “Historic Investment in Water for 2050” process that led to the Willamette River project/pipeline project and how that impacts our water rates; their Utility Payment Assistance process; and their educational offerings like water-wise gardening and how to reduce household usage.

CWS will share background about Washington County’s water resource utility district and will demonstrate the value of their services for us.

Tom Hickmann, Chief Executive Officer and Paul Matthews, Chief Financial Officer will represent TVWD. Carrie Pak, Chief Engineer will also be present. Julie Cortez and Shannon Huggins will speak for CWS.

Before we begin that program at 8 pm, we’ll vote on CPO 1 Officers for 2022. Currently, incumbents are unopposed: Virginia Bruce, Chair; Bruce Bartlett, Vice Chair; and Vicky Siah, Secretary. Any CPO 1 member is welcome to announce their candidacy.

Following the election, we will consider a letter regarding Kenny Terrace/Thompson Road project. Neighbors at the November meeting asked if the CPO would write a letter to the Board of County Commissioners on this topic. We suggested they write the letter and bring it to the membership for a vote. They have submitted it, and we will discuss and vote on it tonight.

The [meeting is held via zoom](#) and is open to anyone interested in our topics and in the community. It is also [simulcast on our Facebook page](#) and available to view any time. If you don’t get the agenda either by postal or e-mail, it’s [posted here, along with a link to sign up \(on the left panel\)](#). Anyone who lives in CPO 1 is eligible to join as a voting member.

CCI requests Planning Commission changes

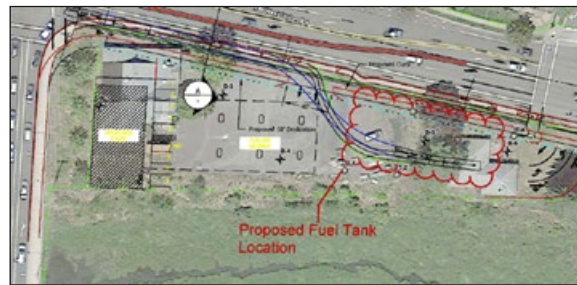
Committee for Community Involvement (CCI) is the leadership group for all county CPO organizations. Noting that absences on the

Planning Commission cause delays, both because of lack of a quorum and because of the time involved to bring new members up to speed, CCI is requesting that alternates be appointed for each position. They would be able to serve in the absence of commissioners and would be ready to step up if commissioners leave office. CCI sent a letter in late November to the Board of County Commissioners (BCC). We’ll let you know how the request progresses.

Development Applications

West Union Gas Station

A proposal to build a 10-pump gas station and a 5000-square-foot convenience store at the corner of West Union and 185th, with 52,000 gallons of underground fuel storage



Fuel tanks will be buried directly adjacent to the wetland, near the creek. (Image from the nabgas site)

80 feet from the adjacent protected wetland, has been submitted, withdrawn, and submitted again to Washington County twice since [April 2020](#).

A hearing was held on November 18 so the county-appointed hearings officer could consider the application. We learned at the hearing that the developer asked for a continuance so they can address issues brought up by the public since the application was filed. A new hearing is scheduled for January 20, 2022, 9 am.

Materials for the application are [linked from this county page](#). Public comments include concerns about the impact to wildlife living in the large wetland directly south of the proposed development; the potential for hazardous waste to escape the site and pollute the wetland, which connects to Bethany Lake; traffic concerns; air pollution concerns; the convenience store would be too big for the lot; the 10-pump station is too big to fit the “neighborhood commercial” definition; it is inconsistent with county environmental goals to reduce

global climate change; safety issues for pedestrians including students who walk to Westview HS and Rock Creek ES; proximity to a floodplain; with the nearby Albertson’s 24-hour grocery, the store is unneeded; the requested variance to allow the larger store, which the developer says is necessary for their profit, is unjustified as it isn’t the county’s responsibility to ensure profitability; convenience stores attract crime; high potential for tank leakage that would damage the wetland and Bethany Lake (a gas station created a huge mess just this year—[posted on the Oregon DEQ website](#)).

Bethany resident Brandon Philips has developed an [extensive website](#) to provide information, resources, and a place for neighbors to gather to better understand and

respond to this proposal. [Visit this page](#) to learn how to submit a comment before the next hearing.

While many people have expressed their opinions that

the project is a terrible idea on its face, current county code doesn’t prevent it. The most likely way for the county to deny the application is through the variance request. Because the developer says they need the large “convenience store” to offset the low profit margin of fuel sales, they are asking for a five foot setback on the 185th side of the building, while the normal setback would be 20 feet. Philips says, “If the Hearings officer does approve the application with the variance I think it is very likely the community takes this to the Oregon Land Use Board of Appeals (LUBA). The variance request hardship being profit is pretty egregious.”

One other possibility is [CDC 403-3](#) that allows for Type III applications to be denied when the “...public interest is not served by permitting the proposed development to occur on the proposed site at the proposed time.” This code section is rarely used, in part because it might subject the county to a lawsuit on [Fourth Amendment “takings”](#) grounds.

Continued on page 7

CPO1 Neighbors Working Together!

Tuesday, December 14
7-9 pm on Zoom

Our Water—Past, Present, and Future
Learn why our rates must increase, and more...

Open to all—visit Facebook or the web page for the zoom meeting link, and sign up for email news!

Community Participation Organization serving the communities of Cedar Mill, Cedar Hills, Bonny Slope
facebook.com/CPO1.WaCounty
WashCoCPO1.org

Managed IT Services for Business

IT support should be responsive & affordable!

Reliable **Flat Fee** **Secure**

PLUS

Web Hosting and Support
Virtual Private Servers and more

Call or visit our site for more info

SPIRETECH
503-222-3086
spiretech.com

Cascadia TAPHOUSE

Check our website for the Tap List, upcoming events, and more!

Enjoy the finest local and regional craft brews, wines, and ciders available to the Cascadia region.

13619 NW Cornell *current hours*
(west end of Safeway mall) Sunday 11-9
CascadiaTaphouse.com M-W 2-10
503-395-4615 Thur-Sat. 11-11

Dean H. Shade
Attorney at Law

503-644-5539
13765 NW Cornell
dshadelaw@gmail.com

Celebrate Locally! Shopping, Events, Connections...

Terra Linda Arts & Craft Fair

Saturday, December 11, 10 am-3 pm,
Terra Linda Neighborhood

Shop local and support your friendly neighborhood artists. The Terra Linda Neighborhood will have 20 creative neighbors selling their handcrafted products and artwork.



You'll find jewelry, paintings, plants, totes, bath and body goods, photography, cards and much more.

There will also be a raffle with 20 wonderful and inspired prizes. Grab a map of makers at the corner of NW 131st Ave and NW Northrup St. For more information, please email terralindacraftfair@gmail.com.

Big Horn Brass Holiday Concert Returns

Sunday, December 12, 7 pm, St. Matthew Lutheran Church, 10390 SW Canyon Rd. YouTube link available for online viewing.



A favorite holiday event for many family calendars will return live this year! A preconcert by the St. Matthew Exaltation Handbells starts at 6:45 pm with the Brass Concert following. This year's concert, "Brass in Toyland," will feature "The March of the Toys." LaRhonda Steele will add her wonderful vocals to the program.

New this year, the concert will be live streamed on the YouTube Big Horn Brass channel. A [link can be found on the website](#). It's a chance to enjoy the concert from the comfort of your home!

Attendance at the live performance requires proof of vaccination or a negative COVID-19 test. The concert will not include an intermission and masks will be required.

This year's free concert is a gift

to the community from the Erik Weswig Memorial Fund, Beaverton Arts Commission, and other supporters of holiday music. Erik was a senior at Sunset High School and enjoyed this concert as part of his family Christmas tradition. In his memory, a Memorial Fund was established to support local events that he enjoyed. Donations for future concerts will be gratefully accepted. For more information or to donate, please go to ErikWeswig.com.

Pamplin Bazaar list

The Pamplin newspaper chain published [a helpful online guide of holiday bazaars](#) around the region.

THPRD Holiday Giving Drive

Ongoing until Wednesday, December 15, various THPRD locations

Tualatin Hills Park & Recreation District (THPRD) is partnering with the Beaverton School District (BSD) for THPRD's annual Holiday Giving Drive. Our goal is to help create a warmer, brighter holiday season for BSD families and students in need.

Patrons may donate gift cards exclusively (no toys or clothing will be accepted). Purchasing gift cards is a great way to support students. Gift cards give families the flexibility to buy personal items, necessities, or gifts during the holiday season. Tips for gift card donations:

Any amount is helpful. Suggested gift card amounts of \$5, \$10, \$20, \$25, \$50, or more. All amounts are welcome. Variety of stores is good. Organizers are asking for redeemable gift cards to grocery stores, local businesses, or large retailers. All are welcome and encouraged.

It's a Holiday Wonderland for the month of December!

Plus expanded hours! Now open Tuesdays-Saturdays 10 am-4 pm daily!

2nd edition resale

1050 NW Saltzman Road
Sales benefit Cedar Mill & Bethany Libraries

To find out which facilities are open and for hours of operation, please [visit the THPRD website](#) or call 503-439-9400.

KGW Great Toy Drive local drop-off location

Through Monday, December 13, 12889 NW Cornell Rd

The KGW Great Toy Drive is on! You can bring any new, unwrapped toy to Dr. Brown & Dr. Freed's Dental office. Your small gift will help bring great joy to the children in our community.

For more information about the KGW Great Toy Drive, please visit kgwtoy.com. If you have any questions, please call or email our office: (503) 643-6643, info@lfbdm.com

Lightopia—An Illuminated Journey

December 9-31, 5:30-8:30 pm, Gordon Faber Recreation Complex, free, [reservations required](#)

The award-winning drive-through light show at Gordon Faber Recreation Complex returns this December. Enjoy a leisurely drive through the brilliant display, which expands to a half-mile this year. Reservations open each Wednesday for the following week's dates.

For more information about the event, as well as the release and full event schedule, please visit Hillsboro-Oregon.gov/WinterEvents.

Skyline Grange Artisan Holiday Fair cancelled but artisan info online

The Fair was cancelled because of safety precautions during the pandemic. Ten artisans have provided contact information that can be [accessed on our website](#). Support

THE VILLAGE GALLERY OF ARTS

Holiday Sale

November 26 - December 24

Wonderful variety of fine art, crafts, jewelry, cards, gifts, ornaments and more by local artists.

If you simply can't decide which work of art to give that special someone...give a

GIFT CERTIFICATE

And let them choose!

HOURS & DETAILS, CLASSES & WORKSHOPS ON WEBSITE:
www.villagegalleryarts.org

Next to the Cedar Mill Library 503-644-8001
► COMMUNITY VOLUNTEER OPPORTUNITIES AVAILABLE ◀

your local artisans, buy locally!



Tree Recycling

Saturday and Sunday, January 1-2 and January 8-9, 9 am-3 pm, Target parking lot (aka old Bales Thriftway), 12675 NW Cornell Rd.

Plan ahead to recycle your holiday greenery. Troop 207 will have a drop off location accepting greenery for recycling but is unable to accept flocked trees. For more information, please visit the [Troop 207 website](#), email the troop at treerecycling@ortroop207.org, or call 971-266-1550.

Cedar Mill Christmas Tree!

Chuck Richards, owner of Sunset Athletic Club, has been wanting a community tree for years, but the project never came together. This year they have put up a light-tree in the parking lot between their new facility, 77 Fitness, and the CVS pharmacy. Enjoy! Maybe next year we can all gather to celebrate!

Dinihanian
CHRISTMAS STORE

Indoor Tree Shopping!

Large selection of
Christmas Trees
Specialty Wreaths
Garlands, Greenery
& Gift Items

OPEN DAILY
10 am-6 pm

November 27-December 19
15005 NW Cornell

Washington County News

New anti-vaping law

Following weeks of public testimony and input from public health officials, on November 2, 2021 the Board of County Commissioners (BCC) has repealed outdated [Ordinance 599](#) and replaced it with new rules that include a ban on retail sales of any flavored tobacco products, including menthol cigarettes, flavored synthetic nicotine, and inhalant delivery systems such as e-cigarettes, e-cigars, vape pens, and e-hookahs that impart a taste or smell other than the taste or smell of tobacco.

Based on findings that indicate tobacco use by youth continues to be a significant health risk, the board's action serves to: Prohibit the sale of any tobacco or synthetic nicotine product to any person under the age of 21; Prohibit sales of any flavored tobacco or synthetic nicotine product in any retail establishment, and; Prohibit coupons, discounts and price promotions for any tobacco product.

Starting January 1, 2022 all tobacco retailers in the state will be required to have a license to sell tobacco products. From January through June 2022, Oregon Health Authority will focus on education to help stores come into compliance with the law. In July 2022 OHA will begin unannounced inspections and start issuing penalties for violation of the statewide law. If OHA observes a violation of the Washington County ordinance, they will notify Washington County. We will respond by contacting the business and first educating them before issuing a citation. Starting January 1, we will also respond to complaints from the public about businesses that are in violation.



Juneteenth adopted as a paid county holiday

Washington County joined the federal government, the State of Oregon, the City of Portland and Clackamas and Multnomah counties this week in offering Juneteenth (June 19) as a paid holiday.

Juneteenth commemorates the freeing of those who had been enslaved among the Confederate states until President Lincoln issued the

Emancipation Proclamation effective on January 1, 1863.

Because June 19 falls on a Sunday in 2022, this new paid holiday will be first honored by Washington County on June 20. Although county buildings will not be open to the public on that day, services that are provided on a 24-hour basis will continue.

Rental assistance continues in Washington County

While the state has made the difficult decision to pause accepting new applications at midnight on December 1 for the Oregon Emergency Rental Assistance Program (OERAP), Washington County's local Emergency Rental Assistance (ERA) program continues to accept applications through existing local pathways.

[Community Action](#), the agency administering local funds for Washington County, maintains a phone line, an online portal and has established partnerships with other agencies, community-based organizations, and public health staff to get the funds out as quickly as possible. These local funds will continue to be available for income-eligible renters over the foreseeable future.

All renters needing assistance and residing in Washington County are encouraged to apply for the Emergency Rental Assistance program. To find out how to apply, visit the [Community Action webpage](#). For immediate resources including shelter and food access contact 2-1-1 online at www.211info.org or by calling 2-1-1.

Ridwell in Washington County

We had planned to do an article about the efforts of Ridwell, a small northwest company, to offer a service to collect hard-to-recycle items and materials from our doorsteps. We ran out of time and space for this month, and things are still in flux.

Willamette Week recently published a [good overview of the situation here](#).

We recently got an invitation from Washington County to take a survey to see if residents would support a similar service if it's offered by current haulers. [Take the survey here](#), and we'll have the full article with background about [Washington County's Garbage and Recycling Advisory Committee](#) and the deliberations that have so far blocked Ridwell from the county.



Adapt to Wellness
Nutritional Therapy
Lynsey Dolejs, FNTPT

- Gut Health & Digestion
- Hormonal Balance
- Fertility & Pregnancy

AdaptToWellness.com • Lynsey@adapttowellness.com



Grand Opening!
Wow & Flutterville Playgardens
is now enrolling in Cedar Mill!

We are a State Licensed Waldorf and Reggio inspired child care serving precious children ages 6 weeks-6 years old. We offer organic plant-based meals, daily time in nature, guest musicians, yoga, art, baking, cooking, and gardening. *Our focus is on kindness, mindfulness, equity and inclusion, and social emotional literacy.*

Contact us for a visit and to learn more
wowandfluttervilleplaygardens.com

503-352-4983 @wowmsdeanna

800 NW 107th Ave
Open year-round
7:30 am-5 pm
ERDC/DHS accepted




Meet Casey Kulla
Democratic candidate for Oregon Governor 2022

- Leader
- Farmer
- Scientist




www.KullaForOregon.com
Paid for by Kulla For Oregon

Looking to buy or sell?
In this market, you need a dependable agent!
FREE Home Market Value Assessment



Call or email to learn more
Rema M. Rahim Salehi
rema.salehi@gmail.com
503.956.8186
Oregon Licensed Broker




Western Oregon DISPENSARY

Online ordering now available
Curbside delivery...
visit our website to learn more
westernoregondispensary.com

Hours
Mon-Sat 10 am-9 pm
Sun 10 am-8 pm
760 NW Dale



Hedlind Law
PROBATE & ESTATE PLANNING

12725 SW Millikan Way, Ste 300 • 503.395.7475 • www.hedlindlaw.com

Roads, continued from page 1
under-construction 116th Avenue (between Life Time and Si Señor) will be City of Beaverton jurisdiction.

Upper Saltzman—another PAC meeting, Open House, BCC briefing

Thursday, December 16, 5-7 pm, via [zoom](#)

Since at least 2005, county engineers have been eyeing the northern end of Saltzman Road (Bayonne to Laidlaw) to improve safety on the narrow winding “thrill ride.” A [Project Advisory Committee \(PAC\)](#) was formed in August 2020 to study some alternatives.

After months of meetings, the majority of PAC members [voted for the western alignment](#). Then we were called back in February 2021 to be told that a [modified design for the eastern alignment](#) was under consideration.

Another PAC meeting is now scheduled for December 16. Interested members of the public are welcome to attend and comment (two-minute limit). Comments can also be submitted prior to the meeting by emailing LUT Project Manager Ben Lively. ben_lively@co.washington.or.us

The [county page on the project is here](#). It notes that an online open house will be held sometime in early 2022. LUT is planning to make a presentation to the Board of Commissioners at their February 15 Work Session meeting.

Sunset HS Marching Band Can & Bottle Drive

Saturday, December 11, 10 am-1 pm, Target parking lot (aka old Bales Thriftway), 12675 NW Cornell Rd.

Drop off your redeemable bottles and cans at the curb to help us raise funds for music programs at Sunset HS. Bring them in any container or use the bags we provide, and we'll give you a new bag for next time. You can reach us at samba@sambanote.org with any questions.

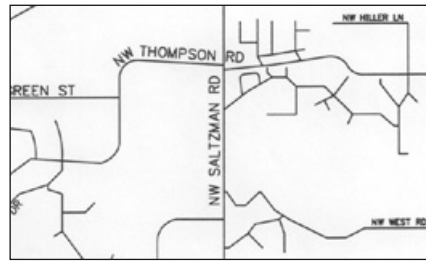
Future SAMBA Fundraisers Saturdays, January 8 and February 12 (weather permitting).

Sunset Apollos Marching Band & Auxiliary fundraisers help pay for travel expenses, entry fees, uniforms, specialized performance instruction, show design, instrument purchase and repair, purchase of new music and arrangements, and scholarships for students who otherwise would be unable to afford to participate.

A short history of the Thompson-Saltzman intersection

By Bruce Bartlett
[Washington County Online Open House January 7-23.](#)

[will be listed on this page when it's ready: co.washington.or.us/LUT/open-houses.cfm]



Map from the 2001 PAC showing the original alignment of Thompson.

The corner of NW Thompson Road and NW Saltzman Road historically had a curious offset configuration, probably due to quarter section allotments when the property was homesteaded by the family of Laurence Lehman and other early settlers. In the course of time, it became necessary to upgrade the disjointed four-way stop to be safely aligned and controlled by traffic lights. Washington County appointed a Project Advisory Committee—a PAC—in 2001 to consider the input of community members on the details of the realignment.

At the same time, most of the Lehman farm on the south side of Thompson Road had been sold and residential development was starting. The CPO 1 neighborhood meeting for the development of the Lehman Farm in was held in April 2002 in the Findley school library. Over 100 people showed up. The remaining part of the farm was designed to protect two old farmhouses the Lehmans lived in

Washington County Public Affairs Forum

Weekly on Mondays, noon-1 pm, via Zoom.

December 6, Stimson Lumber: Rodney Jacobs

December 13, The Child Care Crisis: Karen Henkemeyer & Jessica Rosengreen of Community Action

December 20, Willamette Water Supply Program Update with David Kraska

Join us “virtually” at the Washington County Public Affairs Forum! Get the zoom link to join these free events by [visiting the Forum website](#).

Join to get the privilege of asking questions during the meetings.

and to save a small amount of pasture for his pet cows. The property is now owned by THPRD. Public sentiment ran high in favor of Mr. Lehman’s insistence he not be bothered by a road close to his house.

Washington County Land Use & Transportation (LUT) tried to appease Mr. Lehman and his developer, who just wanted to build as many homes as possible. The PAC actively reviewed four alignment options offered by LUT for the intersection and future alignment. The main problems addressed were:

the irregular intersection of Thompson-Saltzman; the resulting interim circulation flow; access to the Findley Elementary parking lot; and accommodating Mr. Lehman’s desire to continue living unperturbed in his house. Access to the school was, and remains, a very thorny problem. Findley Elementary finally benefited by the addition of the old roadway to their south parking lot for drive-through queuing or else the traffic gridlock on Thompson would be intolerable at pickup/drop off times.

The PAC ultimately recommended a complete build-out and connection of Thompson Road, with Larry Lehman (Laurence’s son) objecting. However, in approv-

Street tree mapping project needs volunteers

Orientation Sunday, January 23, 3 pm, [pre-registration required](#)

Would you like an excuse to walk in pleasant neighborhoods to look at trees? Treekeepers of Washington County is beginning to map, measure, and identify publicly owned street trees, and needs volunteers to help. Get some fresh air, meet some like-minded people, and help our county’s trees.

Find out about this and other volunteer opportunities at our volunteer orientation webinar. Please register in advance. Or contact us at treescountwc@gmail.com. We hope to see you there!

ing the current unconnected road design, the county chose to protect the farm—with BCC approval. This appeased the feisty farmer as a sentimental act. The county’s May 5, 2003 press release was headed “County and Landowner Come to Agreement on Thompson-Saltzman Road.” “Best of all, it allows long time landowners to actively graze their cows and live out their lives in their home without being significantly impacted by the road project.

I spent over 10 hours talking with Mr. Lehman in an attempt to have him relent and let Thompson Road be connected through the new development but to no avail. It is still



The plan that was adopted and then abandoned.

troubling that the farmer who caused the traffic problem demanded to avoid the consequences of his actions during his last years and did not care whether the community suffered from an inefficient and unsafe interim road configuration, or whether the county had to later pay for connecting

Thompson Road.

So here we are. While it saved the county \$1.2M in 2003/4 by not connecting the ends of Kenny Terrace, it is costing us +/- \$6.5M and a lot of frustration now. We are fortunate to have [the MSTIP funds to pay for this major road improvement](#).

See CPO News this month for a recap of the discussion we had at our November meeting.]

Sunset grad party fundraising

The Sunset Class of 2022 Grad Party Committee is actively fundraising to provide a fun and safe celebration for our 2022 graduates. We have partnered with Ann Garcia, certified financial planner, to offer a discount for her online course, “College Financial Plan Masterclass.” For every course registration via our link, she will donate \$50 to the Grad Party! It is never too early to start planning for college financing. Find out more about the course and the link to register by [going to our website](#) and clicking on “College Financial Plan Masterclass.” You can also find more information about the Class of 2022 Grad Party and our ongoing fundraising there.

CPO News, continued from page 3

The project is in CPO7, but it has the potential to affect a large area, and many of us travel to and through that intersection.

Estates at Leahy Park and land use law

A development application has been filed with Washington County to [divide an eight-acre property on NW Leahy Road and build 14 new homes](#). The property includes a large natural area and a stream. The county is currently under a remand from the Land Use Board of Appeals (LUBA) regarding its rules about development around Significant Natural Resources (SNR), so we asked if this would apply to this development.

Stephen Shane, Principal Planner, Current Planning, responded, "The Leahy Estates application was submitted prior to the LUBA remand of Section 422. Staff made the applicant aware that our regulations addressing mapped SNR areas are under remand from the state and it may be in their best interest to supplement any resource findings they submitted with their application with broader findings that address Goal 5 directly."

A bit of history

In December 2019, then CPO 4M resident Jill Warren petitioned the Oregon Land Conservation and Development Commission (LCDC) to take action to force the county to come into compliance with state-wide planning Goal 5 (protection of natural resources) by enacting new enforceable regulations to protect its identified SNR resources. Her initial concern had been a county Hearings Officer's decision to approve a development in that area that would have destroyed an SNR area.

In May 2020 LCDC [voted to impose an injunction on the County](#), prohibiting it from processing applications for developments in designated "Wildlife Habitat" until it came into compliance with state law by adopting new and enforceable regulations. The contention was that the county's standards were not clear and objective, as required by Senate Bill (SB) 1051 that passed in 2017.

The county adopted [Ordinance 869](#) later in 2020 to comply with the LUBA enforcement order. A petition to LUBA was filed by Jill Warren and CPO 4M arguing that the county

still was not in compliance with state law. LUBA remanded (sent back for further work) the ordinance in September 2021. [In its remand, LUBA said](#), "we determined that three subsections of the [Washington County] CDC [Community Development Code] regulating the development of housing in SNR-mapped areas were unenforceable as not clear and objective."

So basically, at this point, the county says they can't really say if



the development can be approved but they want the developer to work on its explanation of how it is protecting the resources (as far as I can tell!)

The development application will be available at the Cedar Mill Library. Ask at the reference desk to see it.

Neighborhood Meeting online rules

Based on concerns about several Neighborhood Meetings where participants were either unable to join at all, or had to join anonymously, Washington County is revising the guidance for developers in holding these virtual meetings. The BCC renewed the emergency declaration that allowed online meetings since COVID at their November 2 meeting, but LUT can change guidelines administratively. They are also considering making virtual or hybrid meetings a permanent option.

CPO 1 November Meeting Notes

Vicky Siah, CPO 1 Secretary

CPO 1 Chair Virginia Bruce started the November meeting with a land acknowledgement. CPO 1 recognizes that "we are here because of the sacrifices forced upon the Native people." We intend to open every future CPO 1 meeting with this statement.

Additionally, Virginia Bruce shared a development map project that Ian Siah is working on. This [map showcases local road and](#)

[property changes](#) as well as when meetings occur. As the county makes changes to the area, the map will be updated to reflect new developments.

The meeting continued with representatives of various community services providing updates. Kody Harris from the Washington County Sheriff's Office reminded attendees to take in packages, lock cars, and keep garage doors shut during the holiday season. WCSO is working with neighborhoods to catch thieves and they encourage residents to make sure their homes and businesses are well lit.

Brian Yourstone from THPRD followed up with THPRD updates. This holiday season, community members can consider making a donation to help seniors pay for a monthly pass so they can enjoy the Elsie Stuhr center. Those interested can visit the [THPRD website](#) for more information.

Erin Wardell, Principal Planner for the Washington County Land Use and Transportation (LUT) department discussed the upcoming MSTIP funding cycle. There are four steps in the MSTIP 23-28 Funding Allocation Work Plan:

- Make the work plan
- Prioritize funding
- Design projects
- Construction of the projects

Currently, Washington County is prioritizing funding. Wardell describes MSTIP as a "pay as you go plan," so projects can attain funding as funds become available. The project list is recommended by the coordinating committee, and the Board of Commissioners makes the final decision to approve or edit the list.

Next, we heard from Fran Warren on habitat assessment guidelines in relation to an injunction from LUBA prohibiting development on Significant Natural Resource areas.

Neighbors discussed the Thompson Road realignment project. Washington County will make the existing Kenny Road into the new alignment for Thompson Road by making changes to lane widths. As a secondary component of this project, the county is also proposing to expand sidewalks to 10-feet. This sidewalk expansion is not favored by the majority of those affected primarily because it would require the removal of 150 trees. The Kenny Road community is adamantly against the tree removal and have created a petition against the sidewalk project.

Chehalem Ridge Nature Park opening soon

Metro Parks is excited to share that [Chehalem Ridge Nature Park](#) will be opening to the public on Monday, December 13. This 1260-acre nature park 15 minutes south of Forest Grove and Cornelius will offer visitors breathtaking views of the Tualatin Valley and the Coast Range and nearly 10 miles of trails. Chehalem Ridge is part of the traditional homelands of the Atfalati (Tualatin) Kalapuya people. It is also home to multiple types of habitat and more than 100 species of wildlife, including beavers, alligator lizards and bobcats.

Due to the challenges and constraints of the COVID-19 pandemic, we are celebrating the upcoming park opening with a variety of online materials. Activities planned for the "grand opening week" include nature activity guides and a self-guided tour map that will be available on the Chehalem Ridge webpage. There will also be a photo contest with prizes on Metro's social media accounts, which you can follow [@oregonmetro on Facebook](#) and [Instagram](#) to stay updated and watch videos.

Ask WSCO: How can I avoid holiday scams?

Just as traditions vary and take on different forms, new and old scams follow suit this time of year, including e-cards and online shopping scams, fake charities, bogus holiday help for hire, spoof travel booking sites, or baiting email offers. While these "deals" may seem like great offers, follow these tips to ensure they are legitimate.

Always do your research before you buy—look for reviews and working contact information.

Be wary of deals that seem too good to be true.


Don't make quick purchases on social media—scam advertisers track your shopping habits from social media ads then target you with specific products they think you'll fall for.

Always use your credit card for online purchases so you can dispute fraudulent charges if needed.

More information on scams and prevention tips can be found on the [Better Business Bureau Website](#).

FREE
Senior Home Placement
Call us first!

We will compare, tour, and make recommendations based on health needs, lifestyle, location preference, and budget.
Our services are FREE!



Living Well

Bess Lindahl • 971-330-4743
LivingWellSenior.com

Biodynamic
Craniosacral
SeaCummins.com

Irene's
Foot Care Clinic

503-292-7555
9450 SW Barnes
irenesfootcare.com

Zo-Ann
at Jade Nail & Hair Salon
Curly Hair
Specialist!
Men, women & kids

503-310-5668
appointments available
Thursday-Saturday
days & evenings!
3673 SW Hall

Historic Union
Cemetery
Plots available
Call 503-515-2255 for info
2005 NW 143rd

Garden News

Delightful winter color in my garden

by Margie Lachman

Walking around my garden on a sunny day this week I wanted to assess damage from our very hot dry summer this year. There is surprisingly little evidence of the extremely high temperatures we endured at the height of summer.

The hardy fuchsias are in full bloom now to the joy of the resident Anna's hummingbirds. The heat delayed their bloom but now in late November they are enjoying the cool days and blossoming in full glory. The Camellia sasanquas are flowering one by one, more favorites of the hummers. These are disease resistant and need only to be pruned after blooming for about two months.



Fuji Waterfall, from "[the landscape of us](#)" [website](#)

Only a very few leaves on camellia 'Cleopatra' show sunburn.

On the North side a Hydrangea macrophylla, "Fuji Waterfall", is now finally blooming! The center has tiny flowers of pale blue surrounded by large white blossoms that have long flexible stems that allow them to flow downward. Lovely and quite late this year because of, I think, the intense heat in summer.

Choysia ternata 'Sundance' is a delight all year with leathery evergreen leaves and bright yellow new growth. It blooms twice for me with fragrant star-shaped white flowers in late spring and again in autumn. Its common name is Mexican orange blossom which gives you an idea of its delightful perfume. The choysia in the front garden is covered with blossoms. In the back garden another choysia has fewer flowers but its lovely bright yellow foliage shines like a beacon from across the

garden. On cloudy gray winter days it is a cheerful sight. This trouble-free shrub seems unfazed by heat in summer, or by snow and ice in winter. It is not bothered by pruning to shape it. Also, mine have not been bothered by insects.

Another star is the shrub Mahonia x media which is loaded with spikes of yellow flower clusters that will open in week or two much to the delight of hummingbirds! This year's bloom will be spectacular with two or three times the usual number of flower clusters that remind me of lilacs. Hummers will feed on the nectar, pollinating them. Our resident hummers are already checking the not yet open

buds for a meal! Blue fruits will appear in early spring to feed other birds.

Happily, the intense sun and very hot temperatures did little damage to the plants in my garden, the majority of which are in full sun. The one exception was sunburn on the Hosta leaves. If you are adding plants that require shade or part shade, I would caution you to choose your site carefully, providing some shade in the afternoon. As our summers became increasingly warmer, we must plan for the changes by selecting plants that do well in hot sun.

Questions? Email me at margierose2@gmail.com

The Real Dirt

The Metro Area OSU Master Gardener program publishes a terrific newsletter with advice, class information, and more.

Stories in the current issue include: [10 trees for fiery fall color](#); [Give plants a head start by planting in fall](#); and videos on [cover crops](#) and [planting garlic](#). [Subscribe here](#).



Master Gardener programs

Food Preservation Training Opportunities

Interested in safely preserving food for you and your family? Think about gifting yourself or a loved one with an online, hybrid course: Preserve @ Home. This national award-winning online food safety and preservation course teaches how to preserve a variety of food products. Class runs six weeks beginning January 20, 2022. [Learn more and register here](#). Registration closes January 14, 2022.

Getting Started in Urban Agriculture

This free online introduction course teaches what "urban agriculture" is, along with essential definitions and concepts needed to help you start this exciting journey! This six-hour, on-demand course includes access to the materials for one year after registration. [Register online here](#). [Join the WCMG mailing list](#) to get bi-monthly news and information.

My Adventures with Strawberry Genetic Resources

Tuesday, December 7, 7-8 pm.
online, registration required

This Washington County Master Gardener Association (WCMGA) meeting covers how gene bank repositories preserve genetic diversity of thousands of traditional crop varieties and their wild species. Presented by Kim Hummer, PhD, Research Horticulturist, USDA National Germplasm Repository in Corvallis.

Dr. Hummer is studying the taxonomy, horticultural identity, and diversity of berry crops. She manages a genebank containing more than 13,000 plant and seed accessions. Her curatorial assignment includes the conservation of fruit, nut, and specialty crop genetic resources. Her present research involves the study of cytology and genetics. Dr. Hummer has named a new strawberry species, released four plant cultivars and an advanced germplasm selection. This webinar is free. For more information and to register, [please go to our website](#).

The WCMGA holds [free monthly gardening lectures](#) on the first Tuesday evening of each month (except July and August). Lectures are free, open to the public, no registration needed, free parking!

Fir tree, continued from page 1
than 13 feet. They can live more than 1,500 years.

The lower branches of Douglas firs droop gracefully. They are easy to recognize by their "groovy" bark, pointed buds, and distinctive, light brown cones with three-pronged bracts. A Native American myth tells of a frightened mouse trying to escape a forest fire and finding safety in a Douglas fir cone. The story goes that the mouse's back legs and tail are still visible sticking out beneath the cone's scales.



Cones hang downward on the branches.

Besides their use as holiday decorations, Douglas firs are critical

to wildlife and to humans. Native Americans use the trees for building, basketry, and medicinal purposes. These trees also helped settle the West, providing masts for ships as well as railroad ties and telephone/telegraph poles. Today, their strong wood is used for wharves, bridge parts, building and construction.



The bark becomes very thick and deeply grooved with age, growing dark reddish-brown ridges

Now, environmental scientists and architects are eyeing Douglas firs for use in cross-laminated timbers for high-rise construction to mitigate climate change. The emissions from buildings constructed from concrete and steel could reach 600 million tons a year by 2050. But construction of timber buildings could [store up to 680 million tons of carbon a year](#).

Living Douglas firs also sequester a lot of carbon. Through photosynthesis, they transform sunlight, water, and carbon dioxide into millions of tons of biomass, about half of which is carbon. The carbon is safely stored in their wood, not warming the atmosphere. Old trees, because of their size, can hold far more carbon than younger trees. The largest 1 percent of trees contain half of all the above-ground live biomass, which also means half of all the carbon. Just one Douglas fir is [expected to sequester almost 14 tons of carbon in its first 100 years](#).

As you go about picking your Christmas tree, be aware that Douglas firs as well as other trees for Christmas decorating are heavily sprayed with pesticides that can adversely affect you, your home and the workers who harvest them. Treekeepers encourages the selecting of trees from [certified organic farms or farms that don't use pesticides](#). In our area, we even have options for businesses that drop off a living tree in December and pick it up after the holidays. Then it is replanted where it can mature and sequester carbon for us.

Protecting mature trees is the mission of [Treekeepers of Washington County](#). [Contact us](#) or visit our website to find out more.

Viva Village December calendar

RSVP is recommended for all events. Email vivavillageevents@gmail.com or call 503-746-5082 to RSVP and to receive the Zoom links for online events.

Activities Open to the General Public:

Online Viva Village 101

Saturday, December 11, 10-11:30 am, via Zoom.

A fun and informational session about Village life for prospective

members and/or volunteers.

Men's Coffee Break

Monday, December 27, 10-11 am, Ki Coffee, 4655 SW Griffith Dr #160.

Conversation and coffee.

Online Viva Village Book Club

Tuesday, December 28, 1-2:30 pm, via Zoom.

Selected book: Perestroika in Paris by Jane Smiley.

[Read the online CMN](#) to see more Viva Village events.

Timmco
INSURANCE

Bob Rosson
Steven DaSilva
12700 NW Cornell Road
503-644-5333
www.timmco.com

Safeco Insurance
Member of Liberty Mutual Group

SUNSET APOLLOS
BAND

Support the
Sunset High
Marching Band
& Auxiliary

Bottle/Can Drive
Saturday, December 11
10 am - 1 pm
Parking lot in front of old Bales store

Please drop off any redeemable
non-crushed cans &
plastic and glass bottles

JAN DEMPSEY

REAL ESTATE BROKER
503.706.6358

Windermere REAL ESTATE
Masters Circle
Diamond Member

JDempsey@Windermere.com

NOYES DEVELOPMENT CO.

CREEKVIEW RIDGE

41 NEW HOMES
AVAILABLE SOON!

ZERO ENERGY READY
LUXURY HOMES

AWARD WINNING LOCAL BUILDER
NOYESDEVELOPMENT.COM

BETHANY 503.614.9061
FAMILY PET CLINIC

BethanyFamilyPetClinic.com
15066 NW Central Drive Portland, OR 97229

OPEN 7 DAYS A WEEK

We Can Make
You This Happy!

AUTO LOAN RATES AS LOW AS:
2.20% APR

1100 NW Murray Blvd., #200
Portland, OR 97229
(503) 643-1335 spsfcu.com

SUNSET
SCIENCE PARK
Federal Credit Union



MENTAL HEALTH MATTERS
Need to talk?
503-291-9111
24/7 Washington County Help Line

the MadHatter
Custom Sewing
Alterations
Upholstery
Mending



We have moved!
Come see us at:
13341 NW Springville Lane, 97229
Just a short drive in the country from
Bethany & Cedar Mill
Like us on Facebook: Mad Hatter GHQ
503-643-3772
anniehorse@comcast.net

The Legacy Project: End-of-life workshop series

People make plans for big events in life. You can also ensure that you are well planned and well prepared for end-of-life issues. The Legacy Project is a seven-part series of virtual workshops in which you will learn from a variety of local experts on how to develop your "Life File," a tool that will help you make a plan for what's important at end of life. Sponsored in part by Washington County DAVS. [Visit the program sign-up page](#) to register.

PEARLS: Program to Encourage Active and Rewarding Lives

PEARLS educates older adults about what depression is (and is not) and helps them develop the skills they need for self-sufficiency and more active lives. This program is offered by Community Counseling Solutions for Washington County seniors experiencing depression and is available in English and Spanish. For more information or to make a referral, call Ruth Vonk at 971-718-6226.

ACMA fundraising and more...

Thursday, December 16, 10:30 am-11 pm, MOD Pizza, 2695 SW Cedar Hills Boulevard.

RSVP on our [GroupRaise](#). For online orders, enter the promo code GR209347A before checkout. Arts & Communication Magnet Academy PTO Fundraiser Supporters may present a print of the code or a digital copy. Please note that phone orders or orders through third party apps services such as Doordash, Grubhub, Postmates and UberEats do not qualify for this fundraiser.

And for more news and for information about ACMA's upcoming production of Sound of Music beginning Thursday, December 9, [visit the ACMA website](#). Thank you for your support of Arts & Communication Magnet Academy!

Using COVID-19 home tests

If you are worried about gathering with others who are unvaccinated, immunocompromised, or at higher risk of developing severe COVID-19, you may wonder about using [COVID-19 home tests](#) to find out whether you and people around you have current COVID-19 infection. While this option isn't cur-

rently recommended by the Centers for Disease Control and Prevention, over-the-counter COVID-19 testing kits are becoming more widely available.

Visit [Oregon Vaccine News](#) to learn more about COVID-19 home tests and what to consider if you choose to use them as part of your holiday gathering preparations.

TVF&R Holiday Safety Tips

It's the holiday season and traditions abound. One tradition many families have is bringing a cut tree into their home and decorating it with twinkling lights and ornaments. Each year, these trees account for hundreds of fires across the nation—keeping your tree healthy and green will help keep your holiday safe!

Tualatin Valley Fire & Rescue encourages you to choose a healthy tree that has been recently cut or to cut one down yourself. Below are some tips to keep your tree merry:

- Right before placing the tree in its stand, cut about two inches from the base of the trunk. This helps the tree draw up water.
- Once the tree is in its stand, add water daily or as needed.
- Place the tree at least three feet from any heat source such as space heaters, fireplaces, heat vents, etc. Trees placed in a room where fireplaces and woodstoves are used will dry out much quicker and should be placed as far as possible from them.
- Use only decorative lights that have a label of a recognized testing laboratory and make sure the bulbs, strings, and connections are not damaged or broken.
- Check for dryness by running your hand down a branch; if the needles fall off, the tree is too dry and should be taken down and disposed of properly.
- Never burn a tree in your fireplace. The combination of dry branches, pitch, and tree oils can ignite within seconds, sending sparks and flames into the room or causing a chimney fire.
- Most communities in TVF&R's service area have a recycling program where a dry tree can be disposed of properly.
- If your choice is an artificial tree, look for the "Fire Resistant" label. This does not guarantee the tree won't catch fire, but it indicates that the tree will resist burning and should extinguish quickly.

Support the local businesses that support the News. They make it possible. Tell them you saw it in The Cedar Mill News!

Your goods can do good. Donate to ReStore.



Beaverton . Portland
Gresham . Vancouver
pdxrestore.org



Total Office Solutions

Get in touch with our workflow experts today for customized office solutions

503-641-2000




14747 NW Greenbrier Pkwy
Beaverton, OR 97006
pacificoffice.com

PACIFIC OFFICE AUTOMATION
Managed IT Services
— PROBLEM SOLVED —

When it comes to brightening your home with twinkling lights, TVF&R offers the following tips:

- Only use UL-approved, low-heat lights.
- Always use outdoor lights outside and indoor lights inside.
- Never use light sets with broken sockets, frayed and/or cracked wires, or missing sockets. Any one of these problems may cause an electrical shock or a fire.
- Prior to using a light set, place it on a non-flammable surface and plug it in for 10 to 15 minutes to check for smoking or melting.
- Lights should only be used on fresh or fire-retardant plastic trees. Never use electric lights on a metal tree as the tree can become charged with electricity from faulty lights and a person touching the tree could be electrocuted.
- Fasten outdoor lights securely to exterior walls, trees, or other firm supports to protect them from wind damage. Do not use nails or tacks to hold light strings in place. Instead, use plastic light string holders or run your light strings through hooks.
- Only use outdoor-rated extension cords with outside lighting displays.
- Turn off all lights when you go to bed or leave the house. Lights can short out and start a fire.

For more fire and life safety tips, visit the [TVF&R website](#).

Register now for PCC Community Ed non-credit classes!

Find all the non-credit classes you need for a discovery-packed winter! Choose class offerings from the arts, writing, languages, career skills, mind and body wellness, tech and finance, home and garden, and more. The term starts January 10 and registration is now open. [Visit the catalog to find your classes](#) and register now! Many are online and some are at the nearby Rock Creek Campus.

Cedar Hills Ready! survey open now

Complete the survey for a chance to win a water filter! We've started planning for next year, and we need your feedback. Please [complete our survey](#) to let us know what preparedness steps you've been able to start or complete. Your participation will inform what we focus on in 2022, so we want to hear from you regardless of whether you've started one of these projects or completed more than half of them. Thank you for your help!

As an added thank you, everyone who completes the survey will be entered to win a two-bucket water filter! If you already have a filter, we can provide an alternate prize.

October Meeting

Thank you to all who attended our last meeting of 2021 on Indoor Fire Safety, with Tualatin Valley Fire & Rescue. The referenced [resources are on our webpage](#), and a link of the meeting's video [recording is posted to YouTube](#).

CHR's Holiday Gift Guide

If gifts are part of your holidays, consider that many households could benefit from assistance in preparing for emergencies and disasters. CHR does not endorse any products, but here is a list of ideas to research as potential gifts.

1. Collapsible solar lantern
2. Tundra fire extinguisher spray can—good for vehicles and small spaces
3. Wound seal topical powder—used to coagulate blood, especially for those on blood thinners
4. Encrypted thumb drive
5. Pillowcase for kids to DIY an emergency kit - Check out the [Red Cross Pillowcase Project](#) for details
6. Items for an under-bed kit (hard hat, leather gloves, dust mask, flashlight, goggles, hi-vis vest, four-in-one emergency tool)
7. Portable solar panel

Gently-used children's items welcome at Northwest Children's Outreach

All centers are open from 10 am to noon on their respective dates: **Wednesday & Thursday, December 8 & 9, 5525 SW Menlo Drive; Wednesday and Friday, December 8 and 10, 335 NE 18th Ave; Wednesday, December 8, 3550 SW Borland Rd**

Several of our 460 Care Providing Agencies have shared that NCO is their only source for children's items. We are asking for your help in protecting our staff while continuing our mission of "standing in the gap for kids in need." Like everything related to COVID-19, we have donation rules—all donations need to be: new or like new—no stains, tears, missing buttons or zippers, shoes must be clean; washed, sorted, bagged, and labeled by gender, item, and size (ex: girls, winter Pants, size seven).

You will need to unload your donations upon arrival – the NCO staff will direct you to the donation drop off bins. Accepted donations are: New and like new children/teen clothing: shirts, sweaters, sweat-shirts, pants, dresses, coats, socks, underwear, and shoes. Note that we distribute styles that are relevant to teens and school appropriate. We cannot accept clothing with stains, tears, rips, missing buttons, pilling, broken zippers, or personalized/team/logo clothing. Baby

items: Diapers, wipes, non-expired formula, clothing, blankets, new hygiene items, new feeding items, new pack and plays, and small equipment items. Hygiene items: Shampoo, toothpaste, toothbrush, comb, soap, deodorant, washcloth, razor, and feminine products. Miscellaneous: Complete toys and toy sets, complete games and puzzles, stuffed animals, books, baby gates, new toys for birthday gifts, bedding, children/baby blankets, high chairs, baby swings, and strollers.

We do not accept furniture, household items, changing tables, cribs, broken or incomplete toys/puzzles, oversized toys, and used car seats/pack-and-plays.

Read The News online:
cedarmillnews.com



Chocolate too, and eggnog for the holidays!
Fresh milk daily, 7 am - 9 pm
24335 NW West Union Rd • 503-647-2638
schochdairy.com

COMPUTER HELP?
CALL THE EXPERTS!



servicing Cedar Mill

- ▶ Spyware/Adware/Virus Removal
- ▶ Hardware & Software Troubleshooting
- ▶ Affordable Backup & Recovery Solutions
- ▶ Specializing in Server & Laptop Repair
- ▶ We Service Business & Home
- ▶ On-Site - Day, Evening and Weekends

503-848-9191 Serving Washington County & Downtown Portland

Locally Owned and Operated
Since 1995 • Best Service at Best Price!

www.eucollectors.net

Bonny Slope Massage

Gift Certificates available!

teamweb.com/
BonnySlopeMassage

503-784-9254

Therapy in the Neighborhood
John Ramey, LMT OR License #9579



You can help prevent and end youth homelessness.
Your gift can be DOUBLED, thanks to the Maybelle Clark Macdonald Fund and Marcia H. Randall Foundation.

NEW AVENUES for Youth



giveguide.org/nonprofits/new-avenues-for-youth-inc



Washington County, Oregon
WOOD STOVE EXCHANGE

Let's clear the air.

www.WoodStoveExchange.com **503-846-4425**

THE ACKERLY AT TIMBERLAND

Festival of Lights

Join us Wednesday, December 22nd, 4:00–5:30 pm

Enjoy a hot cup of cocoa while strolling through
the lights and listening to the carolers.

We look forward to seeing you there!


THE ACKERLY AT TIMBERLAND

It's More Than Retirement. It's Five-Star Fun.

 A LEISURE CARE PREMIER COMMUNITY

11795 NW Cedar Falls Drive

Portland, OR • (503) 462-1181

TheAckerlyAtTimberland.com 



DELICIOUS. NUTRITIOUS.
EXPEDITIOUS.

HOWDY NEIGHBOR!

WE'RE ALREADY THIS CLOSE,
SO WHY NOT STOP BY?



625 NW Saltzman Rd
Portland, OR, 97229

(503) 914-1055
laughingplanet.com



Cedar Mill's Outstanding, Family-Oriented,
Sports, Fitness and Racquet Club

503-645-3535

LOCALLY OWNED/OPERATED

Across From Sunset HS • SunsetAC.com